

# Public Information Centre: Summary

Grimsby GO Station

Transit and Rail Project Assessment  
Process

March 11, 2026 to March 25, 2026





**Table of Contents**

Introduction and Notification..... 3

PIC Display Boards..... 3

Comments and Questions Received ..... 3

Conclusion and Next Steps..... 5

Appendix A – Notice of Public Information Centre..... 7

Appendix B – Metrolinx Socials..... 8

Appendix C – PIC Slides..... 9

Appendix D – Summary of Comments and Responses.....10

Grimsby GO Station



**Figure 1 Project Study Area**

The proposed Grimsby GO Station is being planned by Niagara Region in partnership with Metrolinx to improve regional transit access and support future growth within the Town of Grimsby. The project includes the development of a new GO rail station and associated infrastructure along the Lakeshore West corridor. The study is being carried out in accordance with Ontario’s environmental assessment requirements for transit projects.

The Project Study Area for the Grimsby GO Station is illustrated in *Figure 1*. This area defines the geographic extent within which existing conditions are documented and potential project interactions are assessed.

Public, Indigenous communities, and interested parties consultation is an important component of the study. Feedback received through the Public Information Centre (PIC) and other engagement activities will be used to inform the ongoing planning and design of the project.



### **Introduction and Notification**

A self-serve Public Information Centre (PIC) was held for the Grimsby GO Station project to present the proposed station, outline the Transit and Rail Project Assessment Process (TRPAP), and gather input from interested parties, Indigenous communities, and the general public. This was held from March 11<sup>th</sup>, 2026 to March 25<sup>th</sup>, 2026, it was held online virtually.

Notification of the PIC was provided through a variety of methods, including project website postings, direct email notifications to interested parties and Indigenous communities, and other public outreach measures. The notices included information regarding the study purpose, PIC format, project background, and opportunities for public participation. Variety of mediums were used to provide notification:

- Posting on the Project website – [www.niagararegion.ca/transportation/go-train/grimsby/default.aspx](https://www.niagararegion.ca/transportation/go-train/grimsby/default.aspx) on March 12, 2026
- Mail notice distributed to residents and businesses within and beyond the minimum 30 m regulatory requirement to ensure broader community awareness on March 11, 2026.
- Posting announcement on Metrolinx socials on March 11, 2026

Copy of the notice of the PIC is included in Appendix A. A copy of the posting announcement on Mx socials is included in Appendix B.

### **PIC Display Boards**

The PIC display boards provided an overview of the proposed Grimsby GO Station and the associated Transit and Rail Project Assessment Process (TRPAP), outlining the project's purpose, location, and planning context within the broader GO rail expansion into Niagara Region (Appendix C) The boards described the preliminary station concept and access features, summarize previous studies and policy support, and explained the TRPAP steps, timeline, and consultation opportunities. Key environmental and technical considerations, including natural environment, cultural environment, socio-economic and land use, air quality, noise and vibration, traffic, and transportation were included, along with proposed mitigation approaches. Overall, the materials are intended to inform the public about the project scope, potential benefits, and next steps, and to invite feedback as the assessment progresses.

### **Comments and Questions Received**

A total of 133 public comments were received through online comment forms, email correspondence, and engagement materials.

Public sentiment is overwhelmingly supportive of the proposed Grimsby GO Station. Respondents frequently described the project as long overdue, essential for regional mobility, and critical to supporting population growth within the Niagara Region.

However, this support is conditional and closely tied to key factors including service levels, implementation timelines, and potential community and environmental impacts.

Some of the key themes identified were:



#### Rail Service Levels

The most prominent concern relates to train service. Participants emphasized the importance of frequent, all-day, two-way service, including express or limited-stop options to Union Station, and reduced travel times.

Many respondents noted that existing Niagara corridor service is not competitive with driving, resulting in continued reliance on other stations such as Burlington GO Station.

#### Project Urgency and Delivery

A strong theme across submissions is frustration with the project timeline given how long this proposed station has been planned. Concerns were raised regarding the lengthy planning process, perceived delays, and lack of clear construction timelines.

Participants requested defined milestones, accelerated approvals, and timely progression to construction following TRPAP approval.

#### Regional Demands and Benefits

Feedback highlighted significant demand for improved transit in the region. Anticipated benefits include reduced congestion on the QEW, lower commuting costs, improved access to employment and services, environmental benefits, and increased tourism and economic development.

#### Local Transit Integration and Accessibility

First- and last-mile connectivity was identified as a critical gap. Respondents emphasized the need for local transit connections to surrounding communities, integration with regional transit providers, and improved accessibility for non-drivers, including seniors and students.

#### Pedestrian and Cycling Infrastructure

There is strong support for active transportation infrastructure, alongside concerns regarding safety. Key requests include grade-separated pedestrian crossings, dedicated cycling infrastructure, secure bicycle parking, and improved walkability.

#### Traffic Impacts and Grade Separation

Traffic and congestion concerns were frequently raised, particularly regarding existing conditions at Casablanca Boulevard and the QEW. Many participants advocated for grade separation solutions to address rail crossing delays and improve traffic flow, as well as updated traffic studies reflecting current conditions.

#### Parking and Station Design



## PIC Summary – Grimsby GO Station TRPAP

Public opinion on station design is mixed. While many support adequate or structured parking to accommodate demand, others expressed concern regarding excessive parking and suburban design approaches.

Some respondents encouraged a more integrated, transit-oriented development approach that aligns with the surrounding community.

### Environmental and Neighbourhood Impacts

Participants identified concerns related to noise and vibration, air quality, stormwater management, light pollution, and privacy. Requests were made for updated environmental assessments, long-term monitoring, and mitigation measures, including naturalized landscaping.

### Land Use and Growth Planning

Feedback reflected both concern and opportunity regarding land use planning. Key themes include preserving community character, supporting transit-oriented development, and aligning with municipal planning frameworks such as the Town of Grimsby Official Plan.

### Station Amenities and User Experience

Respondents identified desired station features such as heated shelters, accessible design, safe pick-up and drop-off areas, and integration with nearby amenities. Some suggested a phased implementation approach, beginning with a basic functional station.

### Phasing and Development Strategy

Concerns were raised regarding the proposed phasing approach, including potential limitations on long-term development, separation from future communities, and impacts on ridership and accessibility.

Appendix D provides a complete record of comments related to the topics above and the corresponding responses from the project team.

### **Conclusion and Next Steps**

Feedback received from both the PIC interested parties consultation will be used to refine the project design and inform mitigation strategies as the project advances through the TRPAP.

Comments and input from participants will be incorporated into the ongoing planning and design of the Grimsby GO Station project, including key considerations such as cultural heritage assessments, natural environment features, and coordination with municipal interested parties. These commitments will be documented within the EPR.

The project team will continue consultation with interested parties throughout the TRPAP process, including follow-up meetings, technical coordination, and review of draft materials.



## PIC Summary – Grimsby GO Station TRPAP

Future engagement opportunities will be provided to present project updates, including the recommended design and additional technical findings. All materials will be made available on the project website and incorporated into the EPR as the project progresses.



**Appendix A – Notice of Public Information Centre**

# Notice of Commencement

## Transit and Rail Project Assessment Process

### Grimsby GO Station

Niagara Region in partnership with Metrolinx, is commencing the Transit and Rail Project Assessment Process for the Grimsby GO Station, pursuant to Ontario Regulation 231/08 - Transit and Rail Project Assessment Process under the *Environmental Assessment Act*. Niagara Region is an upper-tier municipal government that provides regional services and coordinates, infrastructure, and transit across its twelve local municipalities. The Region plays a key role in supporting sustainable growth, transportation, and economic development throughout the Niagara area.

### The Project

Metrolinx is expanding transit infrastructure along the Lakeshore West rail corridor between Hamilton and Niagara Region, extending from the Hamilton Junction to Niagara Falls. This expansion includes future enhancements to the track, rail corridor facilities, associated station improvements, and new GO Stations.

The Grimsby GO Station project will add a new GO Station between Confederation Station in east Hamilton and St. Catharines GO Station offering more access to the GO Transit network in Niagara Region.

Grimsby GO Station will be delivered in phases and proposed to include such features as:

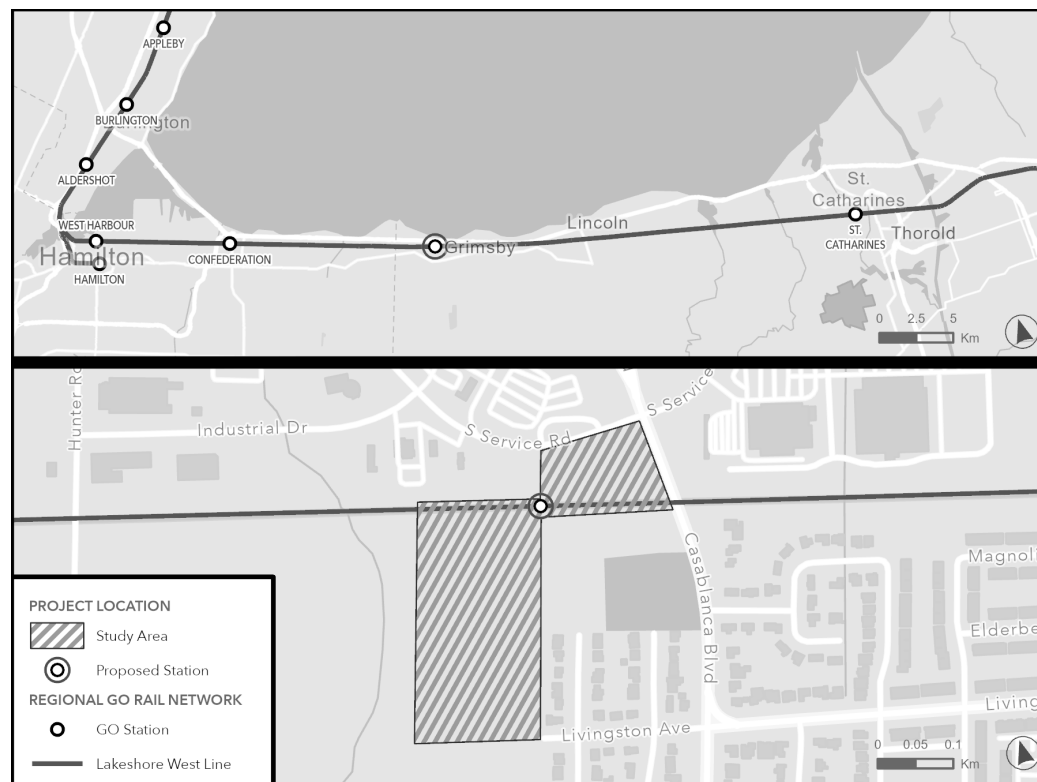
- A Customer platform to access train service
- Station infrastructure required for operations
- A bus loop for customers to access GO Bus and Niagara Regional Transit services
- Customer shelters, fare payment kiosks, digital information screens for trip information/wayfinding, parking lot, bicycle racks, pick up and drop off zone, and pedestrian access to the station

This process will identify and assess potential environmental impacts of this project along with mitigation measures and future commitments to avoid or reduce negative effects.

The project Study Area to be assessed is situated south of the Queen Elizabeth Way (QEW) interchange and west of Casablanca Boulevard, within the Town of Grimsby, Region of Niagara.

### The Process

The environmental impacts associated with the Project are being assessed according to the Transit and Rail Project Assessment Process (TRPAP), as prescribed in Ontario Regulation 231/08 (made under the *Environmental Assessment Act*). The TRPAP is a proponent-driven, self-assessment process that provides a defined framework to follow to complete the accelerated assessment of the potential environmental effects. The TRPAP is a proponent-driven, self-assessment process that provides a defined framework to follow to complete the accelerated assessment of the potential environmental effects and decision-making within the up to 120-day the regulated assessment timeline. As part of the TRPAP, an Environmental Project Report (EPR) is being prepared for the project to reflect project impact assessment, mitigation measures, and commitments to future work. The EPR will be publicly posted with the future TRPAP Notice of Completion initiating a regulatory 30-day public and agency review period and a further up to 35-day Ministry of the Environment, Conservation and Parks (MECP) review.



The map shows the approximate limits of the study area for the TRPAP assessment south of QEW, West of Casablanca Boulevard, East of Hunter Road and in the municipal boundary of Town of Grimsby.

### Consultation

Consultation with the public, Indigenous communities, regulatory agencies, and stakeholders is a key element of the TRPAP. A self-serve online Public Information Centre (PIC) will be available from March 11 to March 25, 2026.

The PIC presentation materials will present the purpose and scope of this project, TRPAP process, existing conditions, concept design, and next steps.

### Your Opportunity to Have Your Say

Members of the public, Indigenous communities, government agencies, and other interested parties are invited to provide comments on the project.



For more information on the study and consultation process, and view upcoming PIC presentation materials, please scan the QR code or visit the Project web page at [Grimsby GO Station](#). If you have any project related questions for Metrolinx and the Niagara Region or would like to be added to the study mailing list, please contact:

GrimsbyGO@Niagararegion.ca  
905-521-1003

**This notice was first issued on March 6, 2026.**



**Appendix B – Metrolinx Socials**



**SHARE**



# Grimsby GO moves forward

Have your say on Niagara Region’s newest GO station

Mar 11, 2026

Niagara Region, in partnership with Metrolinx, has begun planning for the future Grimsby GO Station.

Grimsby GO Station is a proposed station on the Lakeshore West Line, east of Hamilton’s

t of a public  
Niagara Region

[webpage](#).

You can also keep up with updates and construction progress by [subscribing to our e-newsletter](#) and following our Hamilton-Niagara social media accounts on [Instagram](#), and [Facebook](#).

**SHARE**



**Subscribe to Metrolinx News**

[Subscribe](#)

**ABOUT US**

- [Metrolinx Overview](#)
- [Careers](#)
- [Press Room](#)
- [The Metrolinx Shop](#)

**PROJECTS**

- [Expanding GO](#)
- [Rapid Transit](#)

**COMMITMENTS**

- [Accessibility](#)
- [Environmental, Social, & Governance](#)
- [Equity, Diversity, and Inclusion](#)
- [Safety at Metrolinx](#)

**PROGRAMS**

- [Community Benefits](#)
- [Fare Integration](#)

**DISCOVER**

- [Latest Stories](#)
- [Sign up to Discover](#)

Subways

Transit Oriented

Future Transit Planning

Communities

Building Transit

 **METROLINX**

Metrolinx, an agency of the **Ontario Government** under the Metrolinx Act, 2006, was created to improve the coordination and integration of transportation in the **Greater Toronto and Hamilton Area** alongside the **Ministry of Transportation**.



**PRESTO**

**TERMS & CONDITIONS**

**PRIVACY**

**CONTACT**

**STAFF PORTAL**

Copyright © Metrolinx 2026

97 Front Street West, Toronto, ON M5J 1E6, Phone: 416-874-5900

Personal information is collected under the authority of the *Metrolinx Act, 2006*, and in accordance with FIPPA. Personal information you provide will be used, as requested, to respond to your enquiries, add you to an e-mail list that may send promotional messages, enhance and improve our services, or otherwise provide you with a personalized experience.



Metrolinx Hamilton—Niagara

Ad ·



Share your feedback on the future Grimsby GO station as part of the Transit and Rail Project Assessment Process. Visit the online Public Information Centre now through March 25.

# Have your say

Future Grimsby GO station



niagararegion.ca

**Share your feedback**

Consultations open Marc...

[Learn more](#)

92

44 comments

Like

Comment

Share



**Appendix C – PIC Slides**



# Grimsby GO Station

Transit and Rail Project  
Assessment Process (TRPAP)

**Public Information Centre**

Wednesday, March 11, 2026





# Land Acknowledgment

- We would like to acknowledge that the Grimsby GO Station project is geographically located in an area that is rich in indigenous history, and that there are many groups, that have resided in and travelled through the region since time immemorial. We encourage viewers to learn whose traditional territory in which their home and work are located.
- For this project, we acknowledge the presence of the Hatiwendaronk, the Haudenosaunee, and the Anishinaabe including the Mississaugas of the Credit First Nation, and other Indigenous communities and peoples within the project area. There are many First Nations, Métis, and Inuit people from across Turtle Island that live and work in Niagara Region today.



# Welcome

- Exploring This Project Together
  - » Overview of the proposed GO Station
  - » Next Steps in the Transit and Rail Project Assessment Process
  - » Findings of impact assessments studies to date
  - » Due Diligence Commitments
  - » How to provide feedback
- Your Role in the Process
  - » Self Serve
  - » Submitting questions and comments via
    -  [Grimsbygo@niagararegion.ca](mailto:Grimsbygo@niagararegion.ca)
    -  905-521-1003

# Project Overview



- Metrolinx is expanding transit infrastructure along the GO Transit rail corridor beyond Hamilton into the Region of Niagara, under the GO 2.0 program – the next generation of GO train service across the Greater Golden Horseshoe. This is expected to include exploring new corridors and building new stations across the network including Grimsby GO Station.



- The Grimsby GO Station project will add a new GO Station between East Hamilton and St. Catharines offering more access to the GO Transit network in Niagara Region.



- It is proposed along the Canadian National Railway (CN) Grimsby Subdivision near Casablanca Boulevard in Grimsby, Ontario.

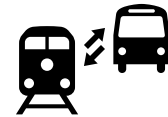
- Scope that is being considered for the Grimsby GO Station includes:



- » A Customer platform to access train service



- » Station infrastructure required for operations



- » A bus loop for customers to access GO Bus and Niagara Regional Transit services

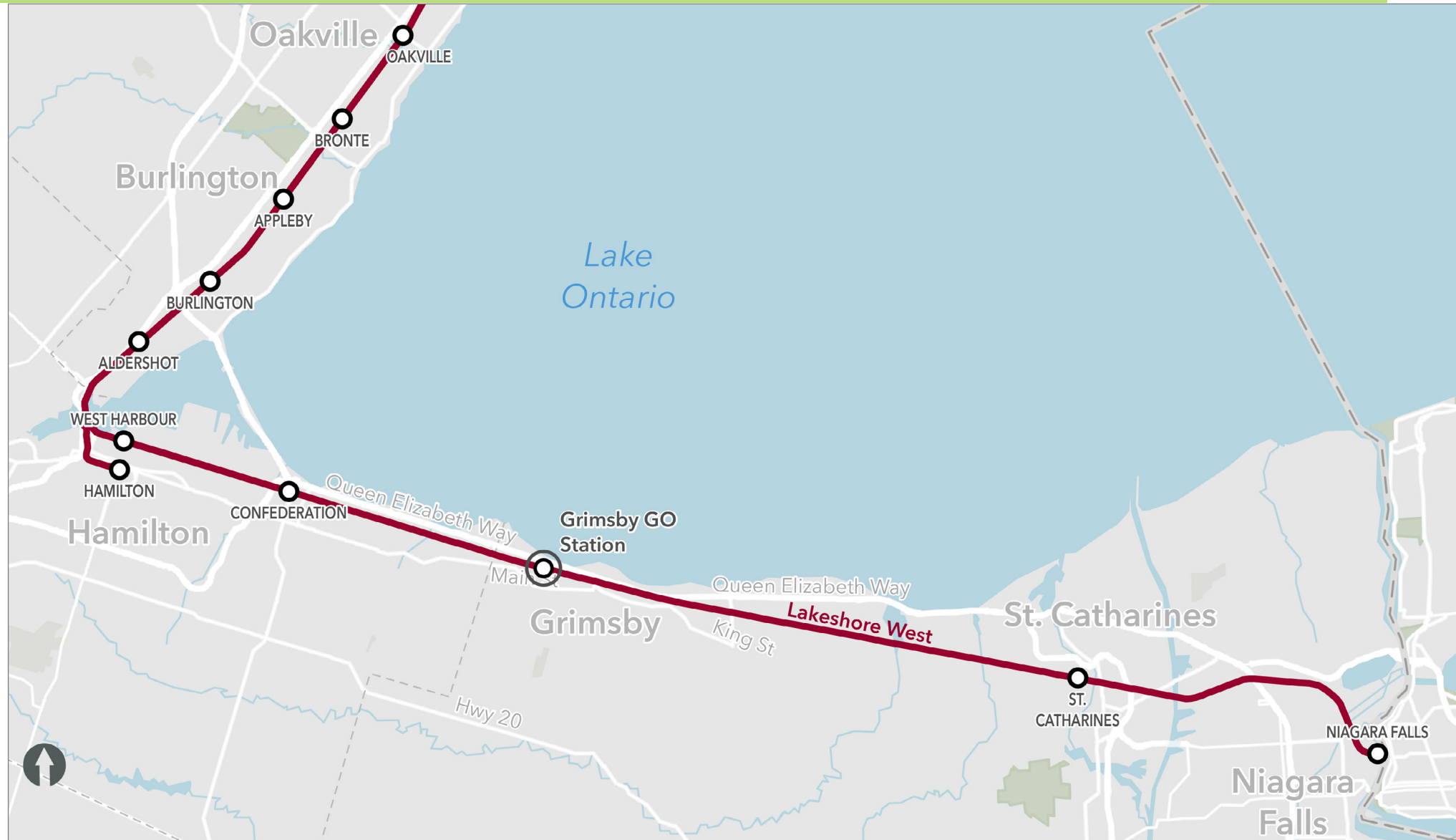


- » Customer shelters, fare payment kiosks, digital information screens for trip information and wayfinding.

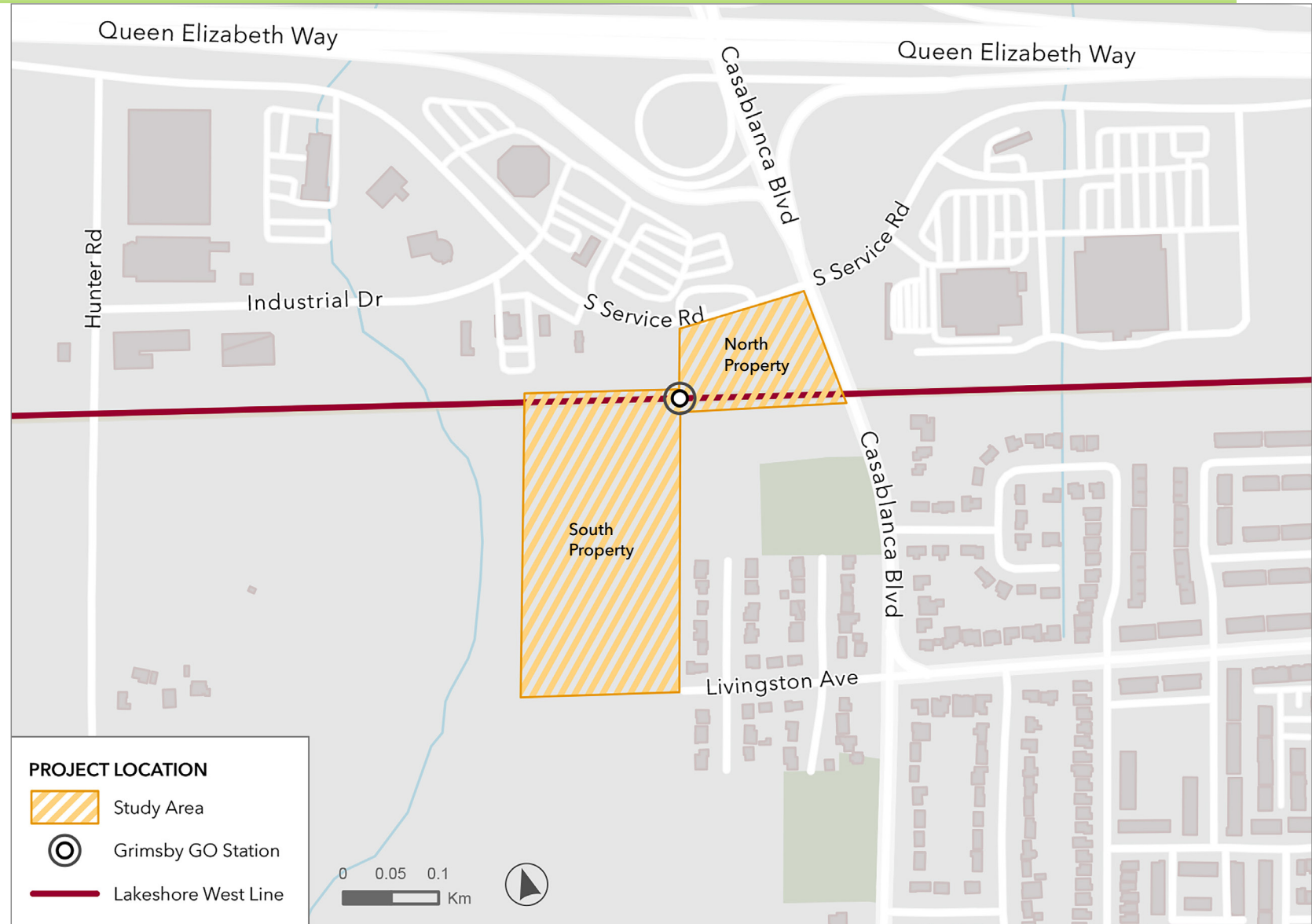


- » Parking lot, bicycle racks, pick up and drop off zone, and pedestrian access to the station

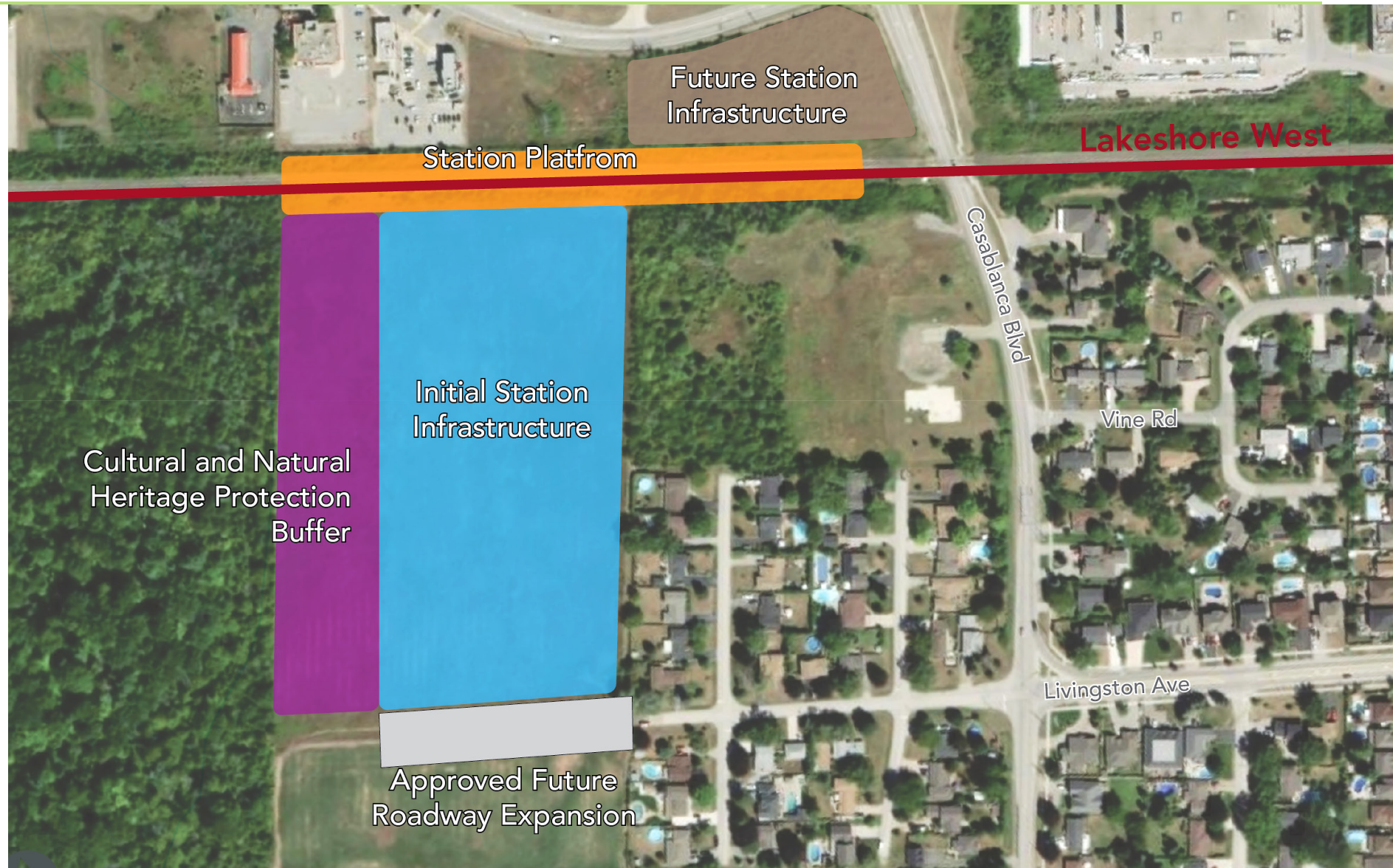
# Key Map



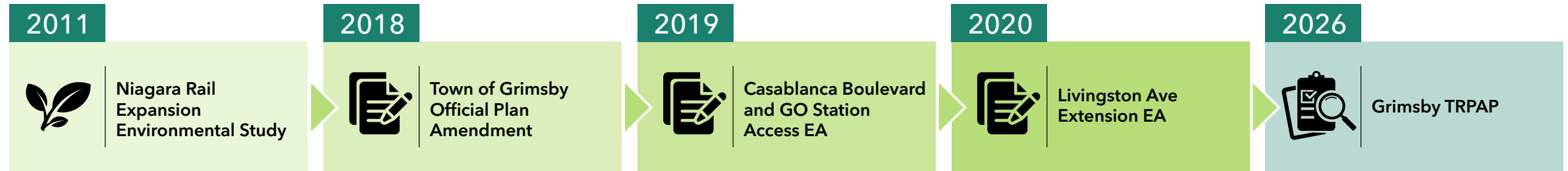
# Study Area



# Current Concept Plan



# Utilization of Previous Studies



Planning for the Grimsby GO Station has been underway for more than 15 years. During this time, several key studies and planning initiatives have supported the future station:

**2011** Metrolinx completed the Niagara Rail Service Expansion Study, identifying Grimsby as a new GO station location as part of expanded service to Niagara Falls.

**2018** The Town of Grimsby adopted Official Plan Amendment No. 6: Grimsby GO Station Secondary Plan to encourage mixed-use development around the future station and to designate the station lands as transit station area to permit use of the lands for transit related uses and infrastructure.

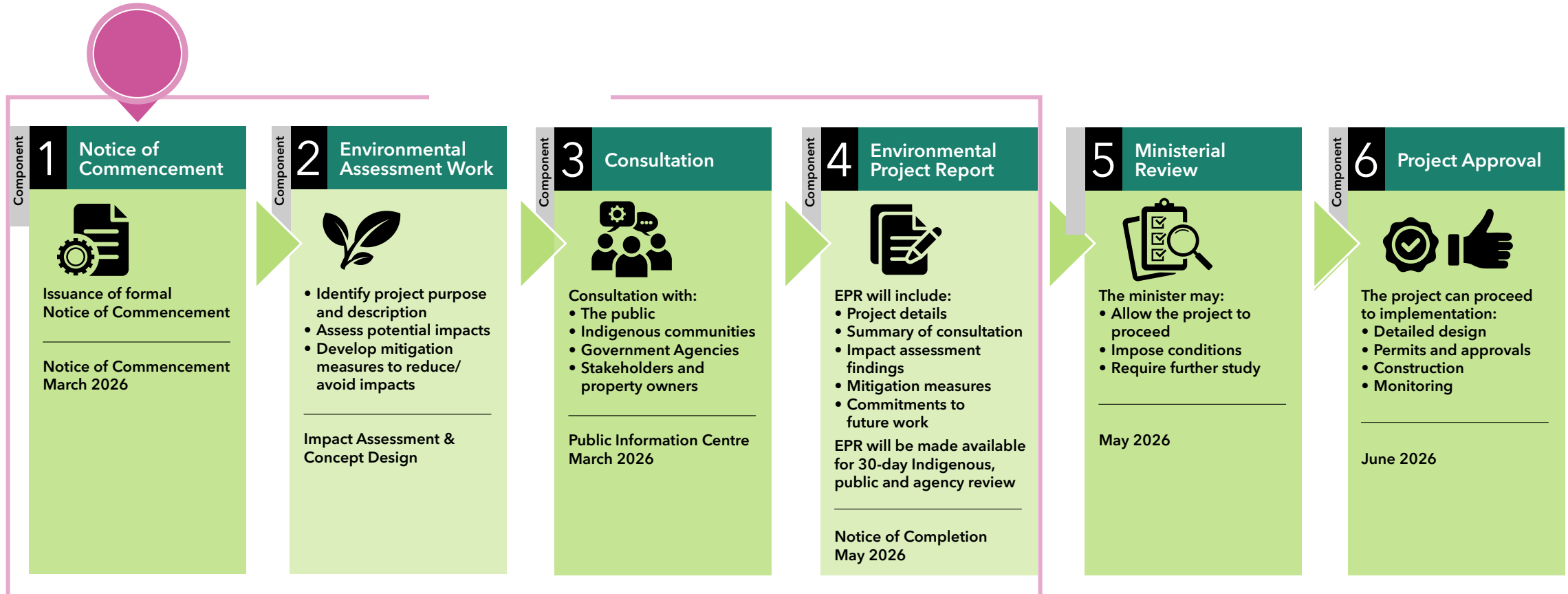
[Town of Grimsby – Official Plan](#)

**2019** Niagara Region completed the Casablanca Boulevard and GO Station Access Environmental Assessment to plan road improvements supporting station access.

**2020** The Region completed the Livingston Avenue Extension Environmental Assessment to improve transportation connections and accommodate long-term travel needs related to the planned station.

# TRPAP Process Flow Chart

- The Transit and Rail Project Assessment Process (TRPAP) is a streamlined environmental process under the Ontario Environmental Assessment Act for eligible transit and rail projects.



# What This Assessment Examines



Present  
Environmental  
Conditions



How the project may  
affect environmental  
condition



Mitigation and  
Commitments

# TRPAP – Environmental Studies

The TRPAP will ensure that natural, social, cultural, and economic environments are assessed and protected, and that any potential adverse effects from proposed infrastructure are avoided, mitigated, or minimized.



Natural Environment



Archaeology



Socio-Economic and Land Use Characteristics



Air Quality



Noise & Vibration



Traffic & Transportation



Cultural Heritage

The assessment will be informed by available information, and commitments to future work will be made as warranted.

# TRPAP – Environmental Studies (continued)



## Natural Environment

- The scope of the assessment will inform the ecological and physical conditions on-site and build on existing information to document existing conditions. In addition, the assessment will document the potential effects and required mitigations and monitoring activities for the construction and operations.



## Cultural Heritage

- Previous Cultural Heritage assessments will be reviewed and summarized to identify known and potential built heritage resources and cultural landscapes within, and adjacent to the Project area and confirm if any site-specific mitigation measures are required.



## Archaeology

- Previous findings and recommendations of Stage 1 and 2 archeological assessment reports will be reviewed, summarized, and confirm if any site-specific mitigation measures are required



## Socio-Economic and Land Use

- A summary of background documentation and statistics will be compiled to describe the current and future social and economic context that will influence the use of the Grimsby GO Station, as well as land use and growth within the vicinity of the project area.

# TRPAP – Environmental Studies (continued)



## Air Quality

- An Air Quality Impact Assessment will be conducted to assess potential impacts from construction-related activities, train operations, and station-related vehicle movement and to identify sensitive receptors in the surrounding area.



## Noise and Vibration

- A construction noise and vibration assessment will be conducted. A Noise and Vibration Impact Assessment will also be required to evaluate potential impacts from train operations and station-related vehicular movements and to identify nearby sensitive receptors.

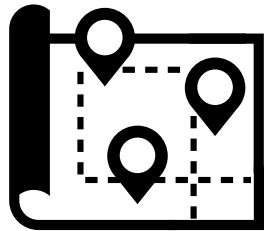


## Traffic and Transportation

- A targeted traffic impact assessment will be completed for the Grimsby GO Station. Building on previously completed studies, this assessment will review how the latest station design will affect the Casablanca/Livingston intersection and Livingston Road west of Casablanca Boulevard.

# Natural Environment Summary

## Field Program Background



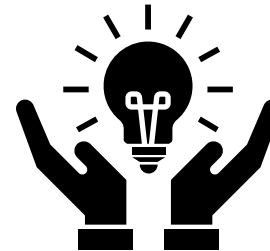
### Focused Field Program

Teams evaluated existing reports and field survey data covering study area properties



### Inclusive of Regional Requirements

Field program included 2020 ELC data collected by Niagara Region/Niagara Region Conservation Authority from 2006 to 2009, and previous data from 2009 to 2018 from surrounding multi-season surveys and studies



### Recommended Approach

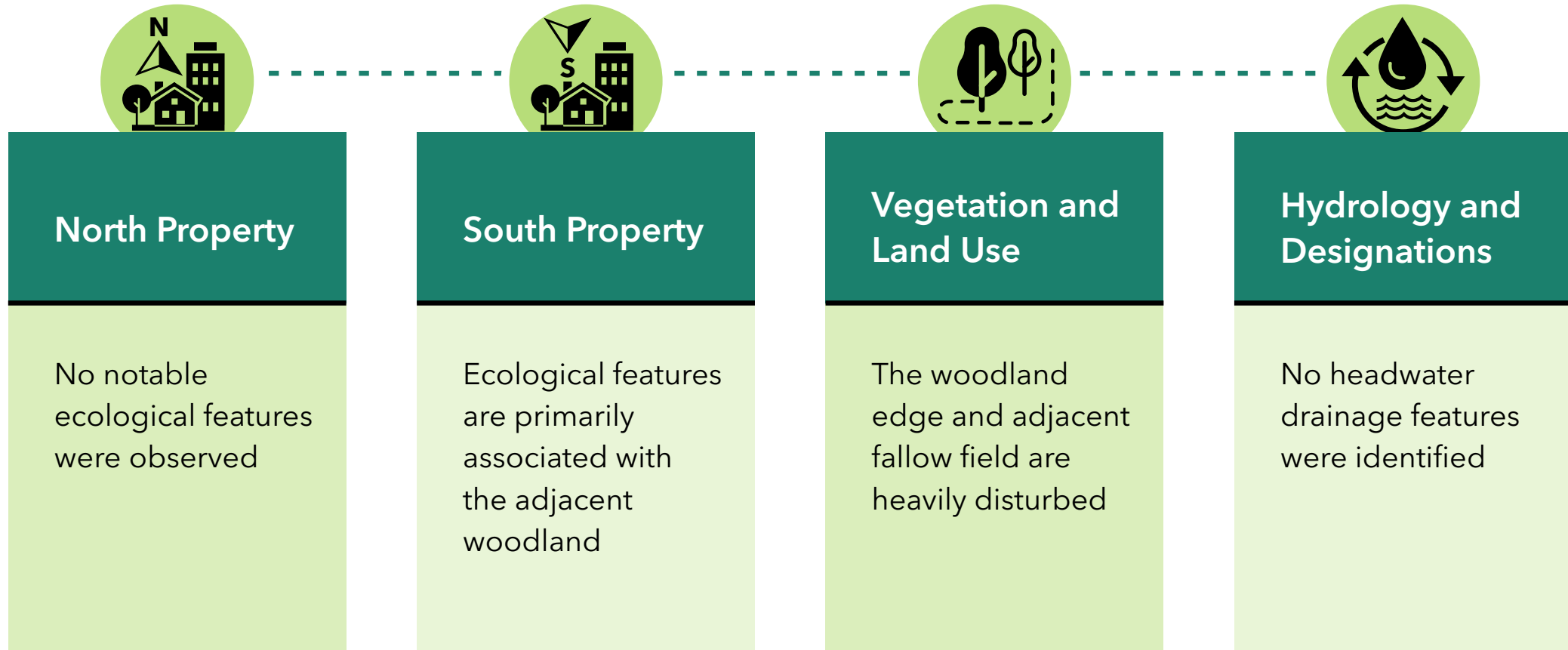
Utilization of past data, updated legislative and policy information, with review and adherence to regional guidelines and the [Metrolinx Vegetation Guideline](#)



### Site Verification and Surveys

Field program incorporated spring ephemeral and wildlife/amphibian habitat review, ELC, breeding birds and tree inventory within vegetation/wildlife active periods

# 2025 Simplified Natural Environment Results

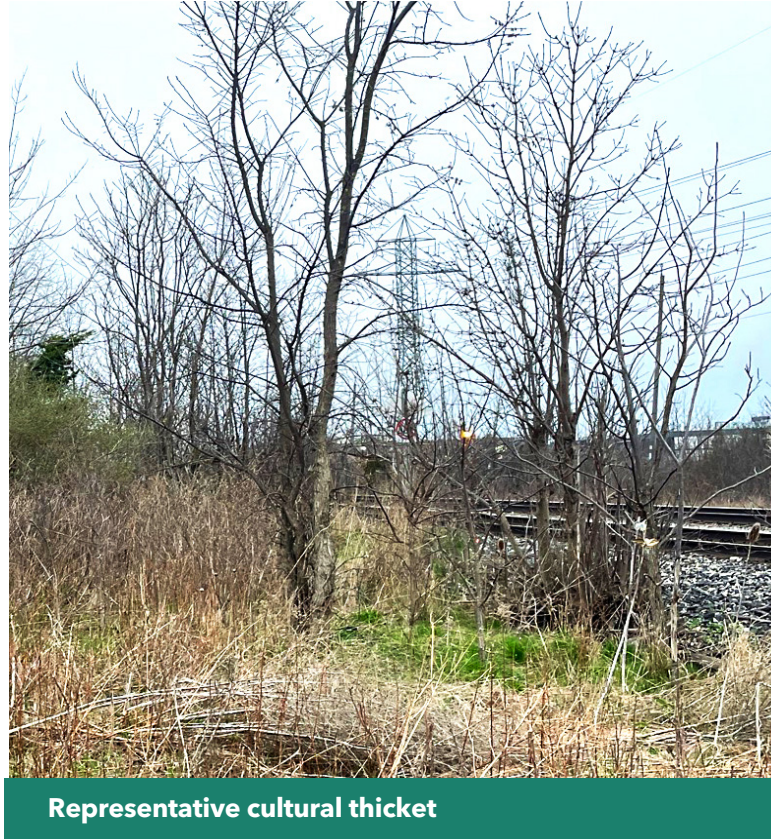


# Summary of 2025 Natural Environment Field Program



## North Property - Key Findings 2025

- Highly disturbed site which lacks suitable habitat for Species of Conservation Concern (SCC)
- Tree/ vegetation re-confirmed in 2025 and consistent with prior fieldwork
- No raptor nests, stick nests, or colonial species (herons) or piliated woodpecker cavities were observed with trees of no notable size, lacking typical habitat characteristics for bats
- Property is not wetland or meadow marsh



Representative cultural thicket



Tree Inventory assessment work will be refined as project progresses.

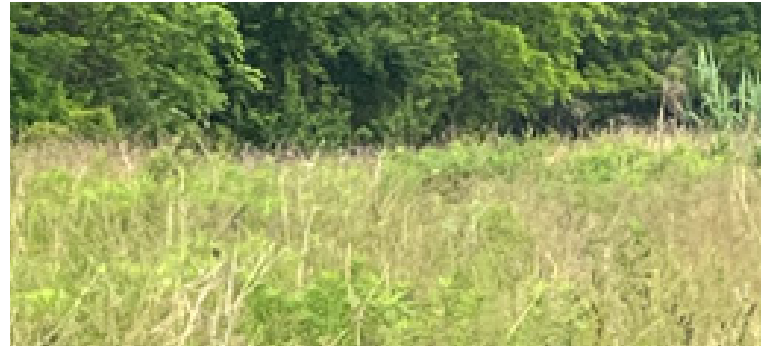
# Summary of 2025 Natural Environment Field Program (continued)



## South Property - Key Findings 2025

### Site limits/Proposed Development Area

- Property is fallow field with woodland located on adjacent lands
- No habitat exists for herpetofauna, terrestrial crayfish etc. within the property
- Targeted grassland breeding bird surveys completed in May/June 2025, and no SCC observed, as habitat has very low potential for SCC birds
- Multiple Migratory Birds Conservation Act (MBCA) – regulated species showed probable or confirmed breeding and nesting activity



Overview of fallow field with adjacent woodland



Overview of sparse ground thatch in fallow field



Tree Inventory assessment work will be refined as project progresses.

# Summary of 2025 Natural Environment Field Program (continued)



## South Property - Key Findings 2025

### Adjacent & Abutting Features

- A small, constructed pond occurs off site (beyond property boundary) and woodland with a watercourse occurs but not within the property
- Woodland expected to provide habitat for a variety of wildlife. No SCC were observed or heard within the woodland edge (10m) or interior (within 100 m) during 2025 work



An anticipated buffer from the watercourse would avoid impacts to the woodland/watercourse feature and any potential wildlife habitat. This buffer will be considered to inform the station design.



Overview constructed pond



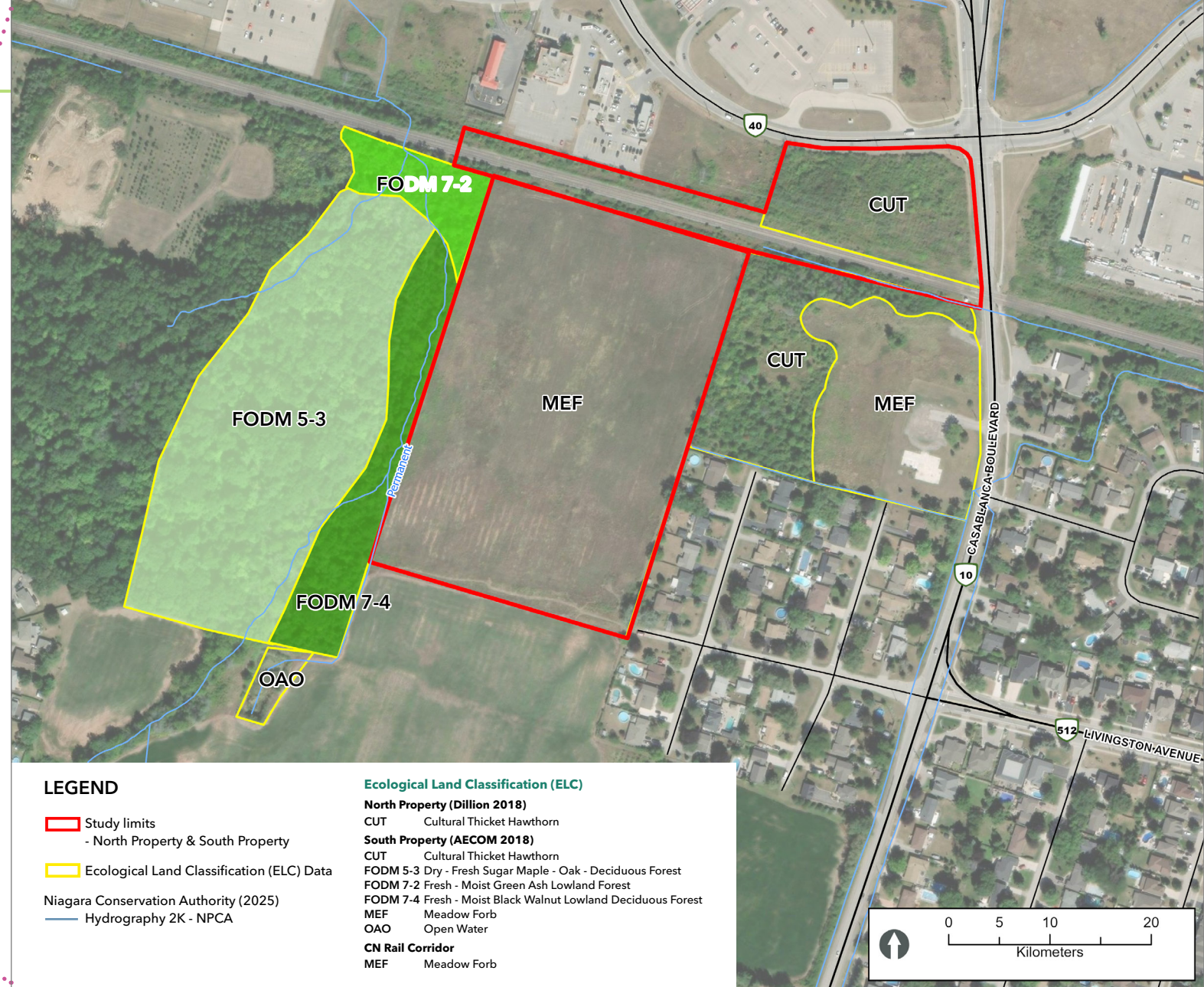
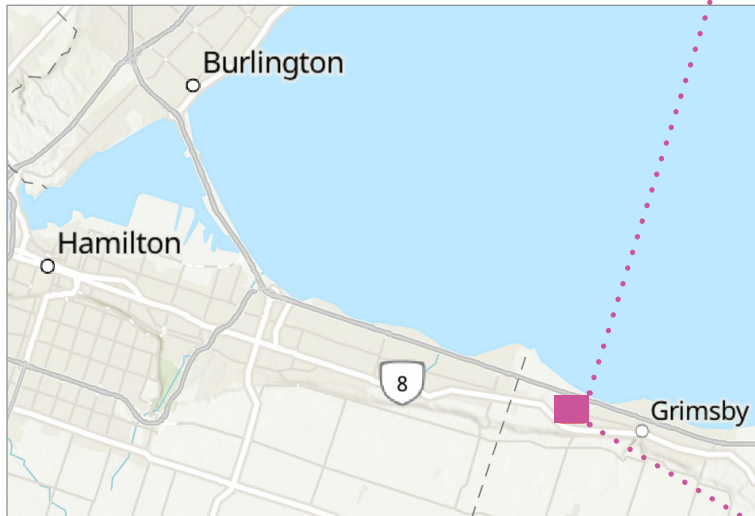
Staking of woodland edge



Overview of watercourse

# Feature Characterization

## North & South Properties

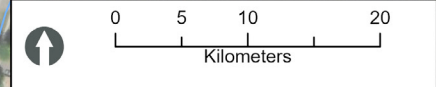


### LEGEND

- Study limits  
- North Property & South Property
- Ecological Land Classification (ELC) Data
- Niagara Conservation Authority (2025)  
— Hydrography 2K - NPCA

### Ecological Land Classification (ELC)

- North Property (Dillion 2018)**
- CUT Cultural Thicket Hawthorn
- South Property (AECOM 2018)**
- CUT Cultural Thicket Hawthorn
- FODM 5-3 Dry - Fresh Sugar Maple - Oak - Deciduous Forest
- FODM 7-2 Fresh - Moist Green Ash Lowland Forest
- FODM 7-4 Fresh - Moist Black Walnut Lowland Deciduous Forest
- MEF Meadow Forb
- OAO Open Water
- CN Rail Corridor**
- MEF Meadow Forb

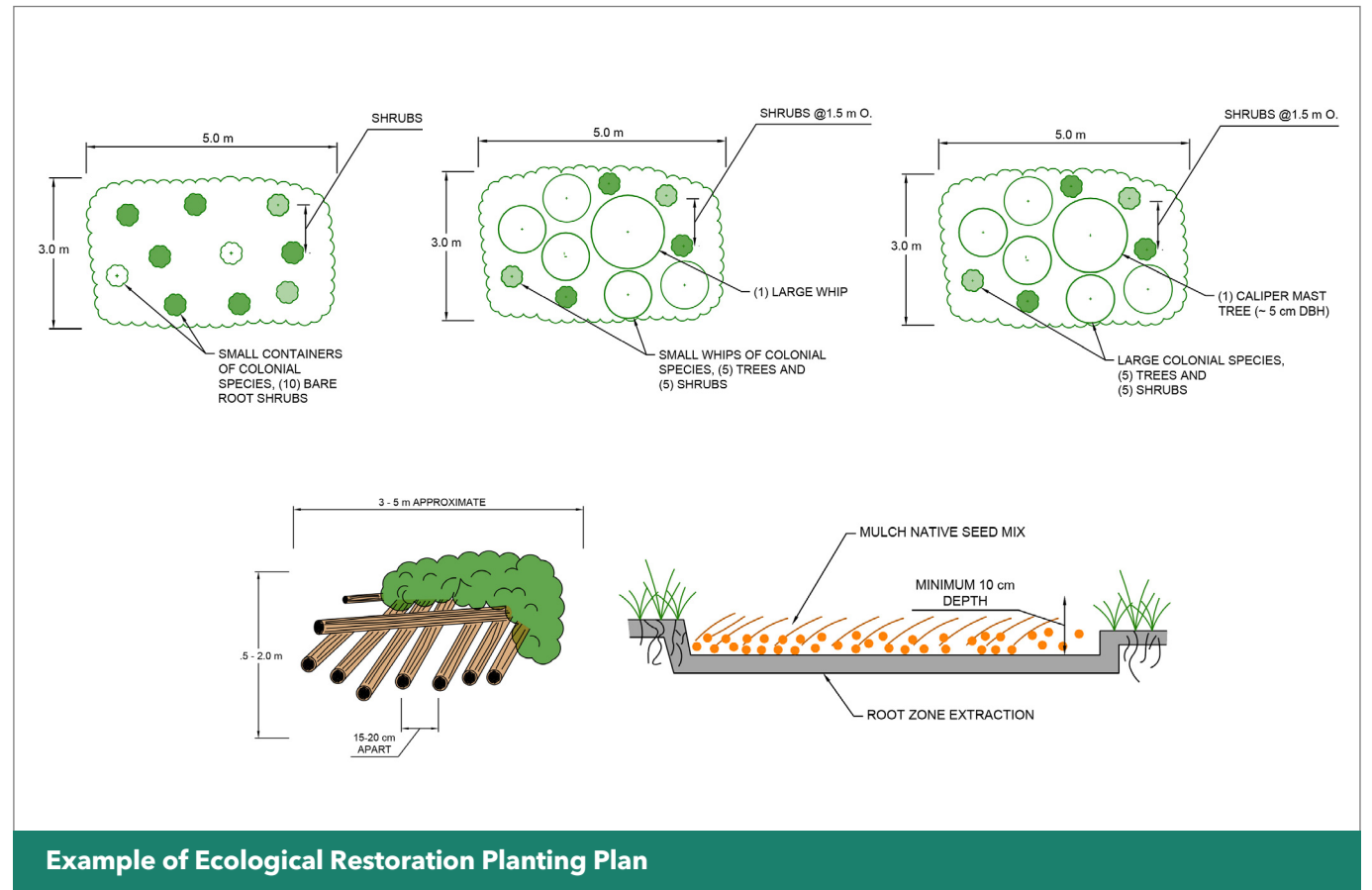


# Restoration Planning

- Compensation for the project will be based on the 2025 Metrolinx Vegetation Guideline.
- Natural environment studies will inform avoidance/minimization in our initial designs, where possible.
- Restoration opportunities will be informed by natural environment studies and anticipated ecological impacts.



Restoration planting initiatives supported by local communities



# Cultural Environment (Archaeology)



Archaeological Assessments

## Stage 1 (2019 - ASI Report)

### Background Summary & Research

Reviewed previously registered archaeological sites in the surrounding area, 19th- and 20th-century historical settlement patterns, and original environmental conditions of the property

### Findings

Property has potential for Indigenous archaeological resources and for Euro-Canadian archaeological resources

## Stage 2 (2019 - ASI Report)

### Field Investigation

Systematic walking survey of entire property at 2.5 m intervals

### Findings

One Indigenous site (AhGv-55) was found in the southern portion of the study area, along with two Indigenous findspots in the northern portion of the study area



A buffer will be maintained to avoid impacts to the archeological site.

# Cultural Environment (Cultural and Built Heritage)



Cultural  
Heritage and  
Environmental  
Assessments

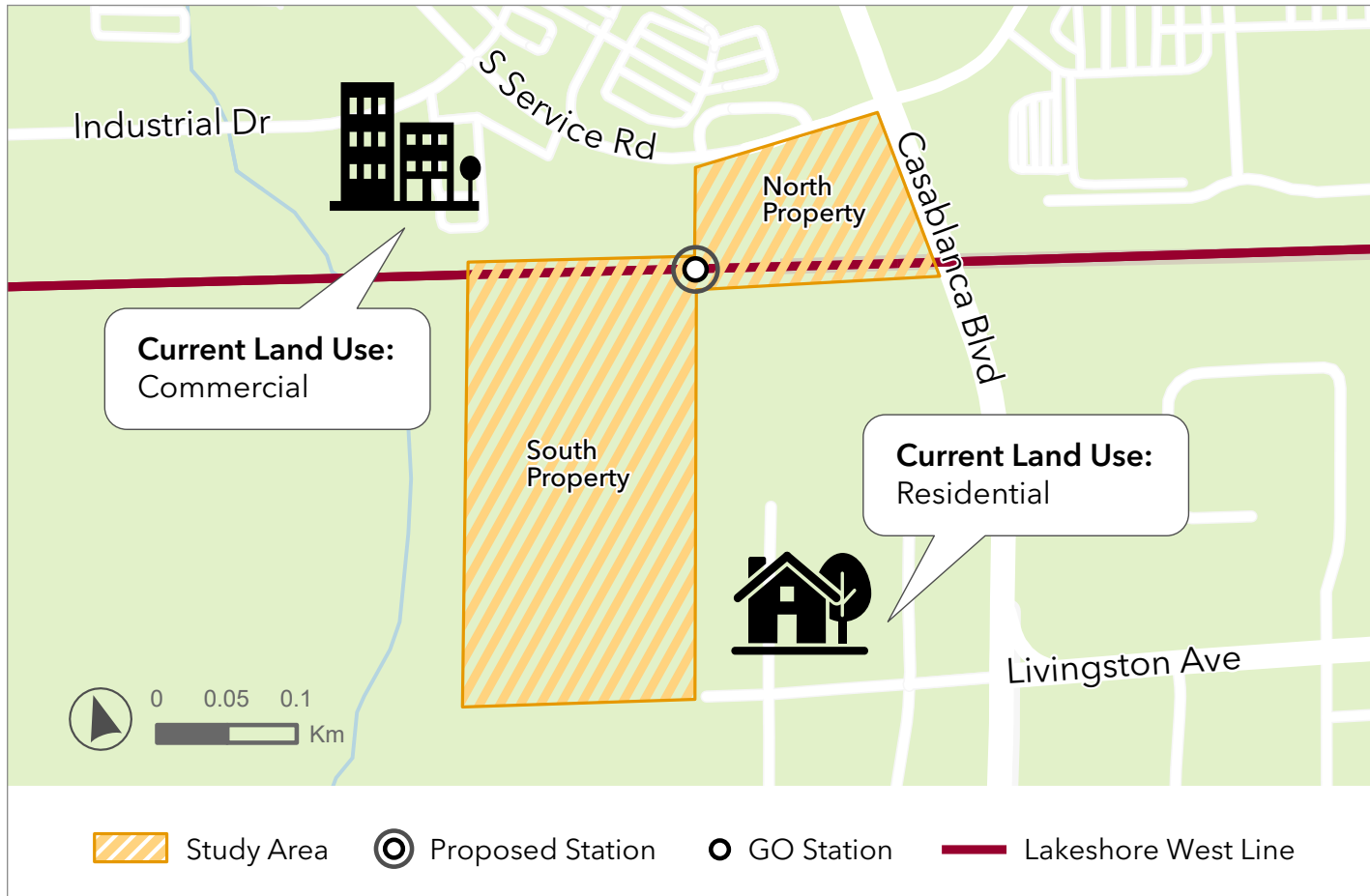
**Cultural Heritage  
Assessment Report:  
Built Heritage Resources  
and Cultural Landscapes**  
(March 2010)

No cultural heritage resources were identified within or directly bordering the Grimsby-Casablanca Boulevard study area.

**Casablanca Boulevard  
and GO Station access  
Environmental Assessment  
Environmental Study Report**  
(March 2019)

One cultural heritage resource (BR-12) was identified adjacent to the Casablanca Boulevard Improvements study area, along with 17 additional resources adjacent to the Livingston Avenue Extension study area. All of these built heritage features are situated along Main Street, which is not in close proximity to the subject site. Given this separation, the 2019 ESR concluded that no specific mitigation measures were necessary, as the project was not anticipated to impact any of the identified cultural heritage resources.

# Socio-Economic and Land Use



## Per Amendment 6 of Town of Grimsby Official Plan

Supports mixed-use development around the future station and designates the station lands as transit station area to permit use of the lands for transit related uses and infrastructure

**Land Use Vision:** guided by Planning Framework – incorporating transportation, urban design, and high-quality public realm

**Socio-Economic Objectives:** aligning with provincial and regional policy objectives to promote compact, walkable neighbourhoods near transit, support economic activity, encourage housing diversity, effectively use existing infrastructure and regional transit investments

# Air Quality

Findings from the existing air quality assessments for the proposed Grimsby GO Station will guide the current phase of work and support informed decision-making.

## Contaminants Identified Above Air Quality Thresholds

**Overview:** The assessment identified several contaminants predicted to exceed current or future air quality thresholds.

- **PM2.5:** ( fine particulate matter): Exceeded the annual average threshold
- **Benzene:** Exceeded the annual average threshold
- **Benzo(a)pyrene:** Exceeded the 24-hour and annual average thresholds



All exceedances were primarily driven by existing background air quality, not the new GO Station.

# Air Quality

## Cumulative Frequency Analysis- Grimsby Station

**Overview:** Additional analysis examined how often air quality thresholds were exceeded

- **Benzo(a)pyrene:** Cumulative concentrations exceed the Ambient Air Quality Criterion (AAQC) threshold of  $0.00005 \mu\text{g}/\text{m}^3$  100% of the time
- **Grimsby Station contribution:** Less than 1% of total benzo(a)pyrene concentrations more than 90% of the time
- **Key Finding:** Exceedances are driven primarily by existing background air quality, not the facility



### Due Diligence Commitment

We will build on existing air quality information and update the assessment to reflect the revised Grimsby GO station design, including the south property

# Noise and Vibration

The existing noise and vibration assessment findings for the proposed Grimsby GO Station will inform the current project and ensure that decisions are based on the most up-to-date information.

## Noise and Vibration Summary

- **Site Observations:** Noise measured during site inspection was within applicable sound level limits at all monitored locations
- **South Side Consideration:** Because earlier assessments did not include the south side of the CN rail corridor, there is potential for noise and vibration impacts in that area

## Casablanca Boulevard and GO Station Access Environmental Assessment (2019)

- Noise levels were evaluated at representative Points of Reception (PORs), including nearby homes and other sensitive locations
- The study found no significant increases in noise levels
- All predicted changes were less than 5 dBA, which is below the threshold considered noticeable or significant



## Due Diligence Commitment

We will build on existing noise and vibration information and update the assessment to reflect the revised Grimsby GO station design, including the south property

# Transportation

## What is Proposed?

The planned GO Transit station in Grimsby will be located along the Lakeshore West line and will provide direct rail service to:

- Hamilton
- Burlington
- Toronto
- Niagara Region

## How Will You Get There?

The station is being designed for multiple travel options, including:



Safe walking routes



Cycling connections and bike parking



Local and regional bus connections



Parking areas



Passenger Pickup and Drop-off

The goal is to make the station easy to access whether you walk, bike, take transit, or drive.

## Road & Traffic Improvements

Planning for the station area may include:

- Improvements to surrounding roads such as Casablanca Boulevard and Livingston Avenue
- Better pedestrian crossings and safer intersections
- Enhanced connections between neighbourhoods and the station

These changes aim to support increased activity while maintaining safe and efficient travel.

## Why It Matters

The Grimsby GO Station will:

- Improve access to jobs and education across the region
- Provide more transportation choices
- Reduce reliance on long car commutes
- Support future growth in the station area

It represents a major investment in Grimsby's long-term transportation network.

# Traffic

## How Traffic Moves Today



### Road Access

The area is mainly accessed by Casablanca Boulevard and South Service Road, which connect directly to the QEW

Traffic in the area includes:

- Residents
- Highway-related traffic
- Commercial and service vehicles

Peak-hour volumes increase near QEW ramps and key intersections

### Walking and Cycling

- Sidewalks exist in some areas, but pedestrian connections are not continuous
- Cycling infrastructure is limited in the immediate station area
- As a result, most people currently access the area by vehicle

### What This Means

- The station area today functions primarily as a vehicle-oriented environment
- Traffic is steady, especially near highway access points
- Future planning for the GO Station will consider how to manage traffic safely and improve options for walking, cycling, and transit

# Next Steps

Following the Public Information Centre (PIC), the proponent will complete the following:



Review and consider feedback from agencies, stakeholders, Indigenous Communities, and the public.



Prepare the Environmental Project Report to document the Process and commitments to detailed design.



Publish the Notice of Completion and commence the 30-day Environmental Project Report review period.

# We Want to Hear from You!



We encourage you to share your comments or questions with us at [Grimsbygo@niagararegion.ca](mailto:Grimsbygo@niagararegion.ca)

The Project Team will be accepting your feedback until **March 25, 2026**.



**Appendix D – Summary of Comments and Responses**

Number	Date of Email	Comment	Reply Selected By Public (Y/N)	Response	Response Sent (Y/N)	Date of Response
1	17-Mar-26	<p>The Grimsby station is a fantastic idea. It would significantly reduce traffic during rush hour for residents of Stoney Creek and the Niagara region who need to travel to Burlington to catch trains that align with business hours. These trains run express to Toronto’s financial district, bringing commuters to downtown within an hour.</p> <p>However, if the Grimsby station doesn’t offer express trains and more frequent schedules, it won’t be effective. Commuters will likely continue driving to Burlington’s station.</p>	No	No response required		
2	17-Mar-26	<p>Hi, I am a resident of Grimsby, living in close proximity to the proposed plans for the Grimsby GO Station. My home is located on Gage Street and runs along the creek identified in the proposal; my property line includes ownership of this creek. I am writing to formally express several concerns regarding the project. First, I would like to address the Environmental Assessment findings from 2019, which state that “all predicted changes were less than 5 dBA,” indicating no noticeable or significant increase in noise levels. Based on lived experience, this conclusion does not align with current conditions. Train activity is clearly audible from my property, and we regularly experience noticeable vibrations that impact our home, such as movement in windows and fixtures, as well as visible cracking in drywall and taping. These observations suggest that both noise and vibration levels are already more significant than reported. Given this, I respectfully request that updated noise and vibration studies be conducted using current, real-world conditions and include input from nearby residents with a survey. It is also important that any revised assessment consider the cumulative, long-term effects of increased train frequency and service levels on surrounding homes and infrastructure and consider compensation to the surrounding homes for maintenance and upkeep of current structures. In addition to noise and vibration, I have concerns regarding traffic impacts. The rail line presents a physical barrier through the town, particularly</p>	Yes	<p>Thank you for participating in the online Public Information Centre for the Grimsby GO Station Transit and Rail Project Assessment Process (TRPAP). As part of the Grimsby GO Station project, a noise and vibration impact assessment and air quality impact assessment are being undertaken to identify any change in impacts from previously completed assessments, where mitigation measures tied to temporary construction activities and permanent operations of this Station may be required. As design advances and a contractor is onboarded, pre-condition survey's will be undertaken as warranted for structures (i.e. homes/buildings) adjacent the project area to further inform any impacts during and post-construction that need to be addressed. A targeted traffic impact assessment is underway to evaluate how the proposed GO Station at the Livingston/Casablanca intersection—and along Livingston Avenue west—will affect traffic within the study area. As part of this work, a site visit and traffic counts will be completed to capture current conditions and better reflect day-to-day traffic patterns. The study is also reviewing the proposed train frequencies at Grimsby GO Station to understand how service levels may influence traffic operations. From a high-level assessment, relocating the station entrance to the south property (with access from Livingston Avenue) is expected to result in most station-bound traffic approaching from the south side of the tracks. This suggests only a small increase in traffic crossing the rail line compared to earlier concepts where access was on the north side. The design has also considered the required minimum distance between the eastern edge of the proposed platform and the Casablanca Boulevard at-grade crossing to avoid operational conflicts, including impacts on gate-down timing. These considerations help ensure that station</p>	Y	01-Apr-26

Number	Date of Email	Comment	Reply Selected By Public (Y/N)	Response	Response Sent (Y/N)	Date of Response
		<p>along key routes such as Casablanca Boulevard and the South Service Road. When crossings are active, there are currently no viable alternative routes, resulting in traffic congestion and delays. With increased train service, this issue is likely to worsen. Regular maintenance and proper timing of crossing barriers are also critical, as any malfunction can further disrupt traffic flow. A more comprehensive, real-time traffic study would better reflect the day-to-day challenges residents already face and the potential impact of expanded service and resident input on said proposals. The proposal also references "road and traffic improvements" to surrounding roads such as Casablanca Boulevard and Livingston Avenue. I would appreciate further clarification on what specific improvements are planned, the anticipated timeline for construction, and how traffic flow will be managed during this period. Based on current conditions, construction activity in this area could significantly exacerbate congestion. Noting the duration of construction and the effects this would directly impact all residents within the town. Additionally, the proposal highlights "supporting future growth in the station area." However, the plans also indicate the presence of protected lands (including areas referenced as FODM 7-4, FODM 5-3, FODM 7-2, and OAO designations) surrounding the site. I would like clarification on what type of growth is anticipated, where it would occur, and how it aligns with existing land use restrictions. Finally, I am concerned about air quality impacts, particularly given the presence of young children and seniors within the community. I would like to better understand how both construction activities and ongoing station operations may affect air quality in the area, and what mitigation measures will be implemented to ensure the health and safety of nearby residents. Overall, I strongly encourage further study and community engagement to ensure that the full impact of this project is accurately understood and addressed and measures are made to reduce the impact of future development, now rather than when</p>		<p>operations do not worsen existing traffic conditions. Further refinement will occur during the design process. Niagara Region has planned for this station in the design for the reconstruction of Casablanca Boulevard. Full build out has already identified the required lane configurations and traffic signal requirements based on anticipated traffic. Niagara Transit is also responsible for providing local transit in collaboration with the Town and currently provides micro transit service in Grimsby that can be booked to provide transit from the station into Grimsby. There are also plans for future fixed route bus service from the station. Timelines for major construction of the new Grimsby GO Station will be confirmed once a Contractor is formally engaged for the project. Environmental studies to support the Transit and Rail Project Assessment Process (TRPAP) are underway and will be completed prior to Metrolinx commencing construction. You may see some early site investigations, preparation activities or CN work within their rail corridor; however, formal station construction has not yet been scheduled. More detailed timelines will be shared with the community as they become available. The Town's Official Plan provides the land use planning guidance for where development can occur. Information about the reconstruction of Casablanca Boulevard and Livingston Avenue can be found at: <a href="https://www.niagararegion.ca/projects/casablanca-livingston-ea/default.aspx">https://www.niagararegion.ca/projects/casablanca-livingston-ea/default.aspx</a> Construction is currently expected to take place between 2026-2027. Community engagement will continue throughout the duration of the project. We welcome questions and comments any time via email or phone. Email: <a href="mailto:Grimsbygo@niagararegion.ca">Grimsbygo@niagararegion.ca</a>. Phone: 905-521-1003. We value the time you have taken to provide comments and feedback. This information will be recorded and will help inform the future of the proposed Grimsby GO Station.</p>		

Grimsby GO Station Public Comments

Number	Date of Email	Comment	Reply Selected By Public (Y/N)	Response	Response Sent (Y/N)	Date of Response
		<p>construction has already started or has been completed. We live in a time where there are both the tools and the responsibility to pursue land development in a manner that is ethical, well-informed, and environmentally responsible. Such decisions should clearly reflect whether the Niagara Region prioritizes the well-being of its residents, rather than focusing solely on cost-driven development and project objectives. I appreciate your time and consideration and look forward to your response. Sincerely,</p>				
3	16-Mar-26	<p>It has been years since this station was promised. We really need this as the train is already passing through Grimsby. This will be a big time saver and also environment saver as many cars will be off the highway as they won't need to drive all the way to Burlington. Please get this done!</p>	Yes	<p>Thank you for participating in the online Public Information Centre for the Grimsby GO Station Transit and Rail Project Assessment Process (TRPAP). We value the time you have taken to provide comments and feedback. This information will be recorded and will help inform the future of the proposed Grimsby GO Station.</p>	Y	01-Apr-26

Number	Date of Email	Comment	Reply Selected By Public (Y/N)	Response	Response Sent (Y/N)	Date of Response
4	16-Mar-26	<p>Hello,I saw the Niagara region's website regarding grimsby go station. I think it's a brilliant idea that needsto be completed as soon as possible.I live in Smithville and work in Downtown Toronto so for me, so this would help me a lot. I wanted to highlight two points:1) This station would only help folks if it provides fast commute to either Toronto or Niagara Falls. I noticed that for lakeshore west go train, there is a big speed discrepancy. The train runs high speed from union until aldershot. However the speeds instantly drops after that and it takes another 45 minutes to reach confederation. Since grimsby is past that, it's going to take even longer. I tried taking the train from confederation go but it ended up taking me 30 extra minutes one way. Now, I drive to Burlington go and then take the train as that's faster. So in my opinion, it's essential to consider the speed of the train. There may be an opportunity to make express trains with stops from Niagara to aldershot and then express to union. 2) A big parking lot should be added to initial plans. A multi level lot is better than a small lot likeconfederation. I hope this helps.Thanks,</p>	Yes	<p>Thank you for participating in the online Public Information Centre for the Grimsby GO Station Transit and Rail Project Assessment Process (TRPAP). At this time, Train service levels are under review and more information will be shared with the community as they become available. GO train service is dependent on ridership patterns and data and Metrolinx does not own the Lakeshore West rail corridor between Aldershot to Niagara Region. Current priority track use belongs to freight rail operators who own the track. Metrolinx will continue to make incremental changes into the future based on ridership demands, with the understanding that major rail and station infrastructure can take several years to complete. Parking needs are also being evaluated as part of the station design. The design is planning to accommodate future growth and demand at the station. Your comments about planning for future growth and considering structured parking will be documented and reviewed as design work progresses. The goal is to ensure the station supports long-term ridership and provides safe, accessible, and convenient options for commuters across the region.We value the time you have taken to provide comments and feedback. This information will be recorded and will help inform the future of the proposed Grimsby GO Station.</p>	Y	01-Apr-26

Number	Date of Email	Comment	Reply Selected By Public (Y/N)	Response	Response Sent (Y/N)	Date of Response
5	16-Mar-26	<p>Hello, Me &amp; my partner work out of DT Toronto and now that offices are emphasizing the need for in person work, this train station could not come sooner for us. However, it's pertinent that not only the Grimsby station gets built but also equally important is that the speed of the train remains consistent. We have noticed that as of now we do not benefit onboarding from Confederation Go, in fact, it only adds more to our commute as the train speed is extremely slow between confederation to aldershot go. To avoid delays, more often than not we take our car all the way to Burlington go and begin our train journey from there. So, even though we have a go station closer to our home, the slow speed defeats all the purpose. Looking forward to speedy updates. Regards,</p>	Yes	<p>Thank you for participating in the online Public Information Centre for the Grimsby GO Station Transit and Rail Project Assessment Process (TRPAP). Thank you for your feedback. At this time, Train service levels are under review and more information will be shared with the community as they become available. GO train service is dependent on ridership patterns and data and Metrolinx does not own the Lakeshore West rail corridor between Aldershot to Niagara Region. Current priority track use belongs to freight rail operators who own the track. Metrolinx will continue to make incremental changes into the future based on ridership demands, with the understanding that major rail and station infrastructure can take several years to complete. Please subscribe in the URL below to stay up to date with the latest news, progress announcements and construction updates from Metrolinx: <a href="http://www.metrolinx.com/en/subscribe-to-emails">www.metrolinx.com/en/subscribe-to-emails</a>. We value the time you have taken to provide comments and feedback. This information will be recorded and will help inform the future of the proposed Grimsby GO Station.</p>	Y	01-Apr-26

Grimsby GO Station Public Comments

Number	Date of Email	Comment	Reply Selected By Public (Y/N)	Response	Response Sent (Y/N)	Date of Response
6	16-Mar-26	<p>After looking at the last proposal we have some concerns. My wife and I have lived at 49 Emily St. for 40 Years, the last house on the north west corner of Emily St. We have some issues at the back and north side of our property with the connecting parking lot for the Go Station. Our concerns are Security issues, Lighting and Noise pollution. We believe an 8' foot high wall should be required behind the properties along the field behind all the houses on the west side of Emily St. to the go station. There is also a concern with water that runs off the escarpment down through the field behind us that and turns into the ditch (town easement) on the north side of my property with water levels of roughly 4 feet every spring. Thank You Waiting for your reply</p>	Yes	<p>Thank you for participating in the online Public Information Centre for the Grimsby GO Station Transit and Rail Project Assessment Process (TRPAP) and for sharing your concerns. We appreciate you taking the time to outline the issues affecting your property. As part of the Grimsby GO Station project, we are assessing potential effects related to noise and site drainage, and mitigation measures will be developed where impacts are identified. Noise and vibration impact assessments are being undertaken to help determine what mitigation measures tied to temporary construction activities and permanent operations may be required. Regarding water runoff, the project team is reviewing existing drainage patterns and local hydrology at a concept level to support the project. As design advances, stormwater management will be appropriately reviewed and addressed to not worsen existing conditions and support the station construction. While impacts to light pollution will not be determined during the TRPAP phase of the project, as design progresses the Metrolinx station lighting design (including the proposed parking area) will be completed in a manner to minimize glare and light to adjacent lands. Your comments regarding privacy and security, options such as fencing or barriers, will be documented and further considered in the design stage. We value the time you have taken to provide comments and feedback. This information will be recorded and will help inform the future of the proposed Grimsby GO Station.</p>	Y	01-Apr-26

Number	Date of Email	Comment	Reply Selected By Public (Y/N)	Response	Response Sent (Y/N)	Date of Response
7	16-Mar-26	<p>Glad to see you posting plans, status of the project, and seeking public comment. I feel your decisions are very suburban, and that is disappointing. The historic via station is much more urban and provides an opportunity to foster a strong urban/ village core to intercity transit connections for GO to Hamilton, Niagara Falls, and Toronto. Please let me know what studies were conducted that determined that yet another suburban rail station with a sea of parking is the best decision for Grimsby. Please don't compromise the excellent opportunity before you to foster a GO station in a healthy village core - which could foster additional condo development - instead of a sprawling station that would be so suburban. If GO feels strongly that a suburban station should be a part of services along the south shore of the lake - consider suburban areas further from the great urban Grimsby option. Perhaps at either the strong suburban development at Winona or further east closer to Vineland or Jordan Station. I look forward to your response,</p>	Yes	<p>Thank you for participating in the online Public Information Centre for the Grimsby GO Station Transit and Rail Project Assessment Process (TRPAP) and for sharing your thoughtful comments. We appreciate your interest in how station location and design decisions were made. As outlined in the PIC materials, the Casablanca Boulevard location was selected through earlier planning work by Metrolinx, the Town of Grimsby, and Niagara Region, which identified the Casablanca area as the preferred station location based on land-use compatibility, transportation access, and technical feasibility. As development in the Town of Grimsby evolves it is expected that the area surrounding the GO station will transform from suburban to a more urban built form, the Town's land use policies are providing the appropriate guidance to enable appropriate development around the station. We value the time you have taken to provide comments and feedback. This information will be recorded and will help inform the future of the proposed Grimsby GO Station.</p>	Y	01-Apr-26
8	16-Mar-26	<p>Hello, I think it would be great if the station had service to and from Hamilton, especially during summer months. I would love to come to Grimsby in the morning, and leave in the late afternoon or early evening. It would be great if the station would have some place to keep bicycles safe, and also would have bus service to get into Grimsby.</p>	Yes	<p>Thank you for participating in the online Public Information Centre for the Grimsby GO Station Transit and Rail Project Assessment Process (TRPAP).</p> <p>As part of the design stage, elements to support covered bike Parking, a vehicle Pick Up/Drop Off, bus bays, and sidewalk connection to municipal infrastructure are all being included to enable access to those who do not drive.</p> <p>Niagara Transit currently provides micro transit service in Grimsby that can be booked to provide transit from the station into Grimsby. There are also plans for future fixed route buses from the station with connections to Hamilton.</p> <p>We value the time you have taken to provide comments and feedback. This information will be recorded and will help inform the future of the proposed Grimsby GO Station.</p>	Y	01-Apr-26

Number	Date of Email	Comment	Reply Selected By Public (Y/N)	Response	Response Sent (Y/N)	Date of Response
9	16-Mar-26	<p>Hi, Just reaching out to provide support for GO train Service to Grimsby. I support for three major reasons: 1) As a downtown Hamilton resident with my wife and children on the way, I hope to see Hamilton continue to grow as an employment and innovation hub. While I do think Grimsby has its own economy I think offering regular train service between the two communities will bring them closer, offer economic opportunities to both, and provide flexibility to families where one person works in one community and the other in a different one. Offering service from Grimsby to Hamilton will open up potential white collar jobs to Grimsby residents and agricultural jobs to Hamiltonians. 2) Additional stations will hopefully justify additional services. West Harbour and further down should have 30 minute service all day, and having more people on GO can help justify that investment as it shows there is demand from Ontarians for transit. 3) Downtown Hamilton is becoming a bustling centre for activities, concerts, and other play. Offering GO service to outside communities means they can leave the car at home or at the station and avoid wasting time and gas in traffic, and we who live here can have less cars downtown. I support Grimsby GO and believe it should either be somewhere central, or additional work should be done to ensure people can walk, cycle, and take transit to the station. Regards,</p>	Yes	<p>Thank you for participating in the online Public Information Centre for the Grimsby GO Station Transit and Rail Project Assessment Process (TRPAP). Train service levels are under review and more information will be shared with the community as they become available. Niagara Transit currently provides micro transit service in Grimsby that can be booked to provide transit from the station into Grimsby. There are also plans for future fixed route buses from the station with connections to Hamilton. A downtown location for the station was reviewed in the 2011 Niagara Rail Expansion Class Environmental Assessment and was not the preferred site due to constraints related to providing access, long-term station expansion, and train servicing needs. However, there is Niagara Transit micro transit available in Grimsby with the expectation of fixed route service in the future to provide connectivity from the GO Station to the downtown core. We value the time you have taken to provide comments and feedback. This information will be recorded and will help inform the future of the proposed Grimsby GO Station.</p>	Y	01-Apr-26

Number	Date of Email	Comment	Reply Selected By Public (Y/N)	Response	Response Sent (Y/N)	Date of Response
10	16-Mar-26	Good afternoon:I would like to join your mailing list pertaining to updates surrounding the Grimsby Go Station.Thank-you,	Yes	Thank you for participating in the online Public Information Centre for the Grimsby GO Station Transit and Rail Project Assessment Process (TRPAP). Metrolinx is improving and building an affordable, integrated and sustainable transit network that connects communities to the things that matter most to them. Please subscribe in the URL below to stay up to date with the latest news, progress announcements and construction updates from Metrolinx: <a href="http://www.metrolinx.com/en/subscribe-to-emails">www.metrolinx.com/en/subscribe-to-emails</a> We value the time you have taken to provide comments and feedback. This information will be recorded and will help inform the future of the proposed Grimsby GO Station.	Y	01-Apr-26
11	16-Mar-26	Our beautiful community is growing fast. New neighborhoods and infrastructure are being build responding to the demand. Grimsby needs now new transit way facilitate our ride to different locations in Ontario. Thankyou for making this possible.	No	No response required	N	
12	16-Mar-26	I am excited to see this project that I think will add a lot of access through the lakeshore west corridor for commuting and tourism. I am glad to see there is plans to keep a wild life buffer for the forested area and do restoration planting. I would personally be likely to take my bike on the train and the travel by bike to Grimsby center (as I have done travelling to Burlington and Hamilton) so I am pleased to see plans to improve the bicycle network at the station. Having a bus loop to serve go buses and local bus connections at the same location is also something I support. Thank you.	No	No response required	N	
13	16-Mar-26	Hello - I wanted to thank the team for the thorough work (over so many years!). I am writing in support of the Grimsby Go expansion and I also wanted to highlight a few other points that I'd encourage you to consider. First, in order for this expansion to be successful, it's <b>IMPERATIVE that Metrolinx focus not just on station build-outs but also on ensuring there are actual trains that service commuters</b>	Yes	Thank you for participating in the online Public Information Centre for the Grimsby GO Station Transit and Rail Project Assessment Process (TRPAP).At this time, train service levels are under review and more information will be shared with the community as they become available. GO train service is dependent on ridership patterns and data, and Metrolinx does not own the Lakeshore West rail corridor between Aldershot to Niagara Region. Current priority track use belongs to freight rail operators	Y	01-Apr-26

Number	Date of Email	Comment	Reply Selected By Public (Y/N)	Response	Response Sent (Y/N)	Date of Response
		<p><b>(in fact, I'd recommend prioritizing the latter).</b> At a minimum, this should include at least one option that permits people to work a basic 9-5 day. Currently, the only Niagara weekday morning train arrives after 9, and the return is at 5pm, making a bare-minimum workday impossible, even if their office is close to Union Station. <b>Second, I'd also suggest your analysis include other important considerations for the citizens this is designed to serve, namely, the impact improved service (not just stations) would have on people's health and well-being.</b> For example, I currently live within walking distance of the St.Catharines Go/former Via station. I'd love nothing more than to walk to the station and take a train to my office in downtown Toronto. However, due to the lack of service and the state of traffic on the QEW, I instead have to wake up at 4:45am, drive to Burlington (to avoid traffic, which can more than double the commute time) and take a train from that station where service is more regular. And the return drive home typically takes an hour. This is not only a huge drain on me and my family (90 mins of driving at minimum each day), but it also adds personal cost (we have to lease a second car solely for this reason) and more importantly congestion and pollution on the QEW. Perhaps including some consideration for the human cost of our poor transit infrastructure would help drive support from local residents and politicians. As you surely know, cost of living is very challenging at the best of times, and if people could commute more reasonably it would not only help them but also help enable more people to live in Niagara and take advantage of all it has to offer. Thank you for reading my note. I truly hope this is not a controversial decision. After all, it was not that long ago that Via operated a commuter train from that station that I wish we still had. It's a sad state of affairs that the rail service is worse now than it was 25 years ago! I would be pleased to assist further in any way if I can. Wishing you all the best with this effort.</p>		<p>who own the track. Metrolinx will continue to make incremental changes into the future based on ridership demands, with the understanding that major rail and station infrastructure can take several years to complete. We value the time you have taken to provide comments and feedback. This information will be recorded and will help inform the future of the proposed Grimsby GO Station.</p>		

Grimsby GO Station Public Comments

Number	Date of Email	Comment	Reply Selected By Public (Y/N)	Response	Response Sent (Y/N)	Date of Response
14	16-Mar-26	awaiting since long time . need to travel for Toronto . lack of go bus timings need to travel everyday Burlington .	Yes	Thank you for participating in the online Public Information Centre for the Grimsby GO Station Transit and Rail Project Assessment Process (TRPAP). We value the time you have taken to provide comments and feedback. This information will be recorded and will help inform the future of the proposed Grimsby GO Station.	Y	01-Apr-26
15	15-Mar-26	This is all needed within this area. And for many people and who commute back-and-forth in and out of cities. I think this can make Grimsby a destination within the future as well. Especially with the surrounding development. Personally, I've been waiting for this station for over eight years now. This would be such a great thing in terms of communication and transportation.	No	No response required	N	
16	15-Mar-26	I'm am in favour of there being a train from Grimsby to Toronto or even westbound options to Kitchener etc. I am someone who has to go to the office downtown Toronto and it takes me almost 2 hours each way driving to the Burlington GO and catching the train from there to downtown. The train should run frequently throughout the days to allow for more flexibility for commuters. This should've been done a long time ago as the population in this area has grown exponentially and the highways are busier than ever. You're not keeping up with the demands, the infrastructure is not able to keep with the rate of growth and the bridge also limits folks if it's closed down etc. Once upon a time there was the flexibility to work from home but now we are going in 3-4 or even 5 days a week and the city should provide go train options for us.	No	No response required	N	

Number	Date of Email	Comment	Reply Selected By Public (Y/N)	Response	Response Sent (Y/N)	Date of Response
17	15-Mar-26	fastrack this project and add extra service on route. Fastrack Beamsville station also.	Yes	<p>Thank you for participating in the online Public Information Centre for the Grimsby GO Station Transit and Rail Project Assessment Process (TRPAP).</p> <p>Metrolinx has completed an Initial Business Case (IBC), in partnership with Niagara Region, the Town of Lincoln, and a third-party partner, for a proposed GO Station in Beamsville through Metrolinx's Transit Oriented Communities (TOC) program. The release of the IBC is the first step in the planning process and is good news for those looking to see expanded transit access in Niagara Region.</p> <p>Niagara Region has been working to transform the train stations at St. Catharines and Niagara Falls to enable enhanced GO service to Niagara.</p> <p>Timelines for major construction of the new Grimsby GO Station will be confirmed once a Contractor is formally engaged for the project. Environmental studies to support the Transit and Rail Project Assessment Process (TRPAP) are underway and will be completed prior to Metrolinx commencing construction.</p> <p>You may see some early site investigations, preparation activities or CN work within their rail corridor; however, formal station construction has not yet been scheduled. More detailed timelines will be shared with the community as they become available.</p> <p>We value the time you have taken to provide comments and feedback. This information will be recorded and will help inform the future of the proposed Grimsby GO Station.</p>	Y	01-Apr-26

Number	Date of Email	Comment	Reply Selected By Public (Y/N)	Response	Response Sent (Y/N)	Date of Response
18	15-Mar-26	Hello, as a resident of Lincoln, just want to say that this ABSOLUTELY needs to be done, and as fast as possible. And, when the Grimsby GO station is up and running, please make the train schedule actually good. NOT like what was done at the newest Confederation GO when it's utterly useless to get from there to Union Station and back unless you're using it for work. What about when we use it just for getting to events in Toronto like sports games, dining, etc... And on the flip side, what about bringing people from Toronto to experience the wine region and not having to drive all the way here? The Grimsby GO needs a regular running train 7 days a week, like Aldershot or Burlington GO, making all stops running to and from Union Station. Thank you,	Yes	Thank you for participating in the online Public Information Centre for the Grimsby GO Station Transit and Rail Project Assessment Process (TRPAP). At this time, Train service levels are under review and more information will be shared with the community as they become available. GO train service is dependent on ridership patterns and data and Metrolinx does not own the Lakeshore West rail corridor between Aldershot to Niagara Region. Current priority track use belongs to freight rail operators who own the track. Metrolinx will continue to make incremental changes into the future based on ridership demands, with the understanding that major rail and station infrastructure can take several years to complete. We value the time you have taken to provide comments and feedback. This information will be recorded and will help inform the future of the proposed Grimsby GO Station.	Y	01-Apr-26
19	15-Mar-26	We absolutely need this to happen. Families are forced to drive to Burlington when we live in beamsville.	No	No response required	N	
20	14-Mar-26	When we will have a GO train service? Really looking forward to. It has been too long .. what takes so long? Grimsby Go service really helps to ease up traffic. It's wonderful! Hope it really will happen soon. Thank you!	Yes	<p>Thank you for participating in the online Public Information Centre for the Grimsby GO Station Transit and Rail Project Assessment Process (TRPAP).</p> <p>Timelines for major construction of the new Grimsby GO Station will be confirmed once a Contractor is formally engaged for the project. Environmental studies to support the Transit and Rail Project Assessment Process (TRPAP) are underway and will be completed prior to Metrolinx commencing construction.</p> <p>You may see some early site investigations, preparation activities or CN work within their rail corridor; however, formal station construction has not yet been scheduled. More detailed timelines will be shared with the community as they become available.</p> <p>We value the time you have taken to provide comments and feedback. This information will be recorded and will help inform the future of the proposed Grimsby GO Station.</p>	Y	01-Apr-26

Grimsby GO Station Public Comments

Number	Date of Email	Comment	Reply Selected By Public (Y/N)	Response	Response Sent (Y/N)	Date of Response
21	14-Mar-26	We do not need a fancy station or a huge parking lot people will drop passengers off at the GO Station. All we need is a platform for the trains to stop and regular service to Toronto weekdays and weekends.	Yes	Thank you for participating in the online Public Information Centre for the Grimsby GO Station Transit and Rail Project Assessment Process (TRPAP). We value the time you have taken to provide comments and feedback. This information will be recorded and will help inform the future of the proposed Grimsby GO Station.	Y	01-Apr-26
22	17-Mar-26	This would be a great opportunity for Grimsby residents to get to and from Toronto. I am thankful for the Centennial station but last weekend I had to get off there to uber to Grimsby and my friend lives in St Catharines and took the go all the way there. Seems like it's a no brainer.	No	No response required	N	
23	14-Mar-26	Hi, These are likely under consideration already but I would like to emphasize the need for walking/bike access to the station from neighborhoods west of the station. This could include a pedestrian bridge across the highway from Hunter rd. and a connection between Hunter rd. and Livingston. Thank you,	Yes	<p>Thank you for participating in the online Public Information Centre for the Grimsby GO Station Transit and Rail Project Assessment Process (TRPAP).</p> <p>As part of the design stage, elements to support bike access and sidewalk connections to municipal infrastructure will be reviewed and included to enable access to those who do not drive.</p> <p>We value the time you have taken to provide comments and feedback. This information will be recorded and will help inform the future of the proposed Grimsby GO Station.</p>	Y	01-Apr-26
24	14-Mar-26	Hello, this feels like Oakville 1975 and it's insane. There is no normal way to get from the Niagara region to the Falls, Hamilton or beyond. A 5am express GO isn't what is wanted. We need a station in Grimsby and Beamsville asap!!!! Tracks are there - we just need a station and GO train scheduled stops. Our towns want tourism yet no way to get in or out without the QEW mania of congestion. This is 20 years overdue!	Yes	Thank you for participating in the online Public Information Centre for the Grimsby GO Station Transit and Rail Project Assessment Process (TRPAP). Train service levels are under review and more information will be shared with the community as they become available. We value the time you have taken to provide comments and feedback. This information will be recorded and will help inform the future of the proposed Grimsby GO Station.	Y	01-Apr-26

Number	Date of Email	Comment	Reply Selected By Public (Y/N)	Response	Response Sent (Y/N)	Date of Response
25	14-Mar-26	What is taking so long to get this project done!	Yes	Thank you for participating in the Public Information Centre for the Grimsby GO Station TRPAP and for your question. Timelines for major construction of the new Grimsby GO Station will be confirmed once a Contractor is formally engaged for the project. Environmental studies to support the Transit and Rail Project Assessment Process (TRPAP) are underway and will be completed prior to Metrolinx commencing construction. You may see some early site investigations, preparation activities or CN work within their corridor; however, formal construction has not yet been scheduled. More detailed timelines will be shared with the community as they become available. We value the time you have taken to provide comments and feedback. This information will be recorded and will help inform the future of the proposed Grimsby GO Station.	Y	01-Apr-26
26	14-Mar-26	I'm really hoping to see the lakeshore west Go train at Casablanca! I, and many others, commute to TO every week, and the centennial GO was a bit of a failure. There needs to be frequent trips to and from Toronto like in Burlington and lots of parking. Most of us still drive that highway hell to Burlington GO because of the trip frequency and parking, we don't get that with the new one at centennial so there's no pressure being alleviated from the Skyway. Please please match Burlington GO.	Yes	<p>Thank you for participating in the online Public Information Centre for the Grimsby GO Station Transit and Rail Project Assessment Process (TRPAP).</p> <p>At this time, Train service levels are under review and more information will be shared with the community as they become available. GO train service is dependent on ridership patterns and data and Metrolinx does not own the Lakeshore West rail corridor between Aldershot to Niagara Region. Current priority track use belongs to freight rail operators who own the track. Metrolinx will continue to make incremental changes into the future based on ridership demands, with the understanding that major rail and station infrastructure can take several years to complete.</p> <p>We value the time you have taken to provide comments and feedback. This information will be recorded and will help inform the future of the proposed Grimsby GO Station.</p>	Y	01-Apr-26

Number	Date of Email	Comment	Reply Selected By Public (Y/N)	Response	Response Sent (Y/N)	Date of Response
27	14-Mar-26	<p>Dear Project Team, Thank you for the information presented as part of the Grimsby GO Station Transit and Rail Project Assessment Process (TRPAP). The materials were very helpful in outlining the proposed station location, the study area, and the transportation and environmental assessments currently underway. As a resident of Grimsby who has been following both the GO station planning process and the Town's Draft Official Plan discussions, I am interested in understanding how the future station planning area relates to broader land-use discussions occurring elsewhere in the Town. The presentation materials appear to show the proposed GO station located near the Casablanca Boulevard corridor, with planning work focused on access, transportation connections, and surrounding land uses in that area. In recent public discussions related to redevelopment proposals in other parts of Grimsby, references have occasionally been made to the rail corridor more generally as a justification for higher-density development within approximately 800 metres of the tracks. Given that the GO station planning and station-area studies appear to be centred near Casablanca Boulevard, I would appreciate clarification on the following points: 1. <b>Whether areas of the Town that are near rail infrastructure but not within the station planning area would typically be considered part of a transit-oriented intensification framework.</b> 2. <b>How municipal land-use planning for areas outside the immediate station planning area is expected to relate to the GO station project.</b> 3. <b>Understanding how the future GO station planning area is defined would be helpful for residents following broader planning discussions in Grimsby.</b> Thank you for your time and for the work being undertaken as part of this project. I appreciate the opportunity for residents to provide input during this stage of the process. An email response would be most appreciated. Kind regards,</p>	Yes	<p>Thank you for participating in the online Public Information Centre for the Grimsby GO Station Transit and Rail Project Assessment Process (TRPAP) and for sharing your thoughtful comments. The TRPAP focuses specifically on the lands required to support the proposed GO Station. Areas along the rail corridor but outside this defined station area are not part of the GO Station's transit-oriented development (TOD) planning under the TRPAP. Not all lands adjacent to the rail corridor would be considered for transit-oriented construction, only the lands within a certain radius of the proposed station are expected to be planned for transit orient development. It is expected that the Town will plan for intensification around the station lands. The Town has proactively planned for a GO Station in this location, on the identified lands, since 2018 when they adopted Official Plan policies through a GO Station Area Secondary Plan. The current and proposed Official Plan outline the areas adjacent to the station lands that are intended for transit-oriented-development. We value the time you have taken to provide comments and feedback. This information will be recorded and will help inform the future of the proposed Grimsby GO Station.</p>	Y	01-Apr-26

Grimsby GO Station Public Comments

Number	Date of Email	Comment	Reply Selected By Public (Y/N)	Response	Response Sent (Y/N)	Date of Response
28	14-Mar-26	I support this.	Yes	Thank you for participating in the online Public Information Centre for the Grimsby GO Station Transit and Rail Project Assessment Process (TRPAP). We value the time you have taken to provide comments and feedback. This information will be recorded and will help inform the future of the proposed Grimsby GO Station.	Y	01-Apr-26
29	14-Mar-26	I 100% fully support this project. I would like to learn more about what would be involved in the two different stages, and if it will be years or decades before the second phase starts after the first finishes. I'm assuming the road and pedestrian upgrades to Casablanca across the QEW will be completed during phase 1. Due to the phasing, I think it will be important that the first phase includes a walkway/access close to the Casablanca and South Service Road intersection. This is where majority of pedestrian activity will be coming from due to the density across the QEW. If pedestrians need to walk down to Livingston and back up north towards the platform across what I expect will be mostly a parking lot - it will disincentive pedestrians and encourage more driving. Thank you very much for pushing this project forward	Yes	Thank you for participating in the online Public Information Centre for the Grimsby GO Station Transit and Rail Assessment Process (TRPAP)As design advances for the initial station infrastructure, elements to support a vehicle Pick Up/Drop Off, bus bays, and sidewalk connection to municipal infrastructure are all being included to enable access to those who do not drive. As future phases of the project are advanced, which will be driven by ridership demands and station expansion needs, the design phase will consider additional station amenities within the south and north properties, as assessed within the footprint of the Grimsby GO Station TRPAP. We value the time you have taken to provide comments and feedback. This information will be recorded and wil help inform the future of the proposed Grimsby GO Station.	Y	01-Apr-26
30	14-Mar-26	It would definitely help a lot of people here in Grimsby to be more free and dynamic, the fact that there is direct train to Union station it makes it difficult for people who work in toronto and study in that region, if you don't have a car then you are stuck, if you want to rely on GO Bus to get to burlington you will soend 2h and half to just get to union station and sometimes more than that, basically you spend the whole day to reach to other cities. People without car they frel isolated here in Grimsby. We are inpatiently waiting for A grimsby GO train.	No	No response required		

Grimsby GO Station Public Comments

Number	Date of Email	Comment	Reply Selected By Public (Y/N)	Response	Response Sent (Y/N)	Date of Response
31	14-Mar-26	Hi, I don't believe that Casablanca for Go Train is not a good Idea. Once all remaining Housing is being built, there will be to much congestion in the area. Especially with Queen Elizabeth Way right there and multi Accident makes it not ideal for Emergency Vehicles easily access. Use Stop at Ontario Street straight access to Town. Move Water Tank loading Station to easier Location. Also move Grimsby Works Department and Grimsby Legion to different easier access Location. People would be right in Town especially in Summer. Continue to Work with Metro link	No	No response required		
32	13-Mar-26	Fully in support of the GO station	Yes	Thank you for participating in the online Public Information Centre for the Grimsby GO Station Transit and Rail Project Assessment Process (TRPAP). We value the time you have taken to provide comments and feedback. This information will be recorded and will help inform the future of the proposed Grimsby GO Station.	Y	01-Apr-26
33	13-Mar-26	This is a welcome development for Grimsby community. It will open up more tourist to the lovely wineries of Grimsby. The local businesses will benefit from this and more businesses will begin to open up in the community. Plus, people can park their cars and travel by rail to Toronto and environs. I'm looking forward to the new Grimsby GO.	No	No response required		
34	13-Mar-26	We need a go station in Grimsby asap! Come on, get this done.	No	No response required		

Number	Date of Email	Comment	Reply Selected By Public (Y/N)	Response	Response Sent (Y/N)	Date of Response
35	13-Mar-26	Please tell me why another study on top of all the previous studies needs to be completed, it's simple just get it built. Thanks	Yes	<p>Thank you for participating in the Public Information Centre for the Grimsby GO Station TRPAP and for your question. We understand the desire to see the station built as soon as possible.</p> <p>Although several studies have been completed in the past, updated work is required in that the project must follow the provincial Transit and Rail Project Assessment Process (TRPAP) which requires current environmental information be assessed before construction can begin. This study is not restarting the process; it builds on all previous work and helps confirm the final design so the project can move forward to construction.</p> <p>Thank you again for your interest in the project. We value the time you have taken to provide comments and feedback. This information will be recorded and will help inform the future of the proposed Grimsby GO Station.</p>	Y	01-Apr-26
36	13-Mar-26	Hi I live in Beamsville and been hearing for years that a GO station was going to be built in Grimsby. Why is it taking so long? and why does it need yet another study? Please explain to me how its possible this station isn't ready to be built now? The traffic and negative environmental outcomes of this traffic is crazy coming into niagra. Look how quick capital projects get done in Toronto.	Yes	<p>Thank you for participating in the Public Information Centre for the Grimsby GO Station TRPAP and for your question. We understand the desire to see the station built as soon as possible. Although several studies have been completed in the past, updated work is required in that the project must follow the provincial Transit and Rail Project Assessment Process (TRPAP) which requires current environmental information to be assessed before construction can begin. This study is not restarting the process; it builds on all previous work and helps confirm the final design so the project can move forward to construction. Timelines for major construction of the new Grimsby GO Station will be confirmed once a Contractor is formally engaged for the project. Environmental studies to support the Transit and Rail Project Assessment Process (TRPAP) are underway and will be completed prior to Metrolinx commencing construction. You may see some early site investigations, preparation activities or CN work within their corridor; however, formal construction has not yet been scheduled. More detailed timelines will be shared with the community as they become available. We value the time you have taken to provide comments and feedback. This information will be recorded and will help inform the future of the proposed Grimsby GO Station.</p>	Y	01-Apr-26

Grimsby GO Station Public Comments

Number	Date of Email	Comment	Reply Selected By Public (Y/N)	Response	Response Sent (Y/N)	Date of Response
37	13-Mar-26	We are thrilled to have a Go Station in Grimsby. Please make it happen quickly. Gas prices are going up and commuting to Toronto has proven difficult due to traffic. We need this train station to open asap. Thank you.	No	No response required		
38	13-Mar-26	When is the expected go train station suppose to start at Casablanca? Can u give a time frame on this ?	Yes	Thank you for participating in the Public Information Centre for the Grimsby GO Station TRPAP and for your question. Timelines for major construction of the new Grimsby GO Station will be confirmed once a Contractor is formally engaged for the project. Environmental studies to support the Transit and Rail Project Assessment Process (TRPAP) are underway and will be completed prior to Metrolinx commencing construction. You may see some early site investigations, preparation activities or CN work within their corridor; however, formal station construction has not yet been scheduled. More detailed timelines will be shared with the community as they become available. We value the time you have taken to provide comments and feedback. This information will be recorded and will help inform the future of the proposed Grimsby GO Station.	Y	01-Apr-26
39	13-Mar-26	Totally for it. My son goes to school in Toronto and. Commutes.	No	No response required		
40	13-Mar-26	Hello We are Grimsby residents and excited about the upcoming Go station in Grimsby. Please add me to the project mailing list.	Yes	Thank you for participating in the online Public Information Centre for the Grimsby GO Station Transit and Rail Project Assessment Process (TRPAP).  Metrolinx is improving and building an affordable, integrated and sustainable transit network that connects communities to the things that matter most to them.  Please subscribe in the URL below to stay up to date with the latest news, progress announcements and construction updates from Metrolinx: <a href="http://www.metrolinx.com/en/subscribe-to-emails">www.metrolinx.com/en/subscribe-to-emails</a>  We value the time you have taken to provide comments and feedback. This information will be recorded and will help inform the future of the proposed Grimsby GO Station.	Y	01-Apr-26

Grimsby GO Station Public Comments

Number	Date of Email	Comment	Reply Selected By Public (Y/N)	Response	Response Sent (Y/N)	Date of Response
41	13-Mar-26	Thank you for providing us with the opportunity to provide our feedback relating to this project! The information as provided is excellent! I appreciate you taking into account all impacts. <b>I'm concerned about the increased traffic = noise, and how the station will be designed.</b> Just like in Niagara-on-the-lake, our town has a certain character that's calm, quiet and abound with natural beauty. Has that been taken into consideration? This is a chosen home for so many of us because of those characteristics and I feel that it's important to have that lens. I'm excited for this project as I will definitely be using the service from time-to-time, so I appreciate all your efforts! Thank you for your time. Regards,	No	No response required		
42	13-Mar-26	This is so exciting and badly needed. We hope there will be several time choices on a daily basis.	No	No response required		
43	13-Mar-26	Good morning, I just want to provide positive feedback about the future go station. Let's get it "go"ing (get it...) ASAP. It will be great for our community. The future site sign has been in those bushes since my wife and I moved to Grimsby almost 8 years ago. I would have expected it to move a bit quicker, however that being said I'm pleased that there has been positive momentum in the last 6 months to a year. Please continue your good work. Thanks and have a great day,	Yes	Thank you for participating in the online Public Information Centre for the Grimsby GO Station Transit and Rail Project Assessment Process (TRPAP). We value the time you have taken to provide comments and feedback. This information will be recorded and will help inform the future of the proposed Grimsby GO Station.	Y	01-Apr-26

Grimsby GO Station Public Comments

Number	Date of Email	Comment	Reply Selected By Public (Y/N)	Response	Response Sent (Y/N)	Date of Response
44	13-Mar-26	<p>Hi, I moved to Beamsville 3 years ago in the hopes of having a GO train nearby. I still continue to commute to downtown Toronto for work and excited to see progress. With more days in the office, it has been a challenge. Is there a rough timeline for the completion of this station? Also, could there be express stops added please to reduce the commuting time. Thanks!</p>	Yes	<p>Thank you for participating in the Public Information Centre for the Grimsby GO Station TRPAP and for your question.</p> <p>Timelines for major construction of the new Grimsby GO Station will be confirmed once a Contractor is formally engaged for the project. Environmental studies to support the Transit and Rail Project Assessment Process (TRPAP) are underway and will be completed prior to Metrolinx commencing construction.</p> <p>You may see some early site investigations, preparation activities or CN work within their rail corridor; however, formal station construction has not yet been scheduled. More detailed timelines will be shared with the community as they become available.</p> <p>We value the time you have taken to provide comments and feedback. This information will be recorded and will help inform the future of the proposed Grimsby GO Station.</p>	Y	01-Apr-26
45	13-Mar-26	<p>Hello all, I would like to say I work in Grimsby at the FedEx Last Mile Station off of Tops Dr. I live in Stoney Creek downtown, and having a Go Train head there would be very beneficial for me as I don't own a car anymore, and there is no transit in the area. I take the number 55 from East Gate Square in Hamilton to Costco in Winona, and that is how far the Hamilton bus goes. Then it's a 30-minute walk to work or a 15-minute bike ride when the weather is good. That's all I have to say; build it, and they will come.</p>	No	No response required		

Grimsby GO Station Public Comments

Number	Date of Email	Comment	Reply Selected By Public (Y/N)	Response	Response Sent (Y/N)	Date of Response
46	13-Mar-26	This can not come fast enough. I know it will take time but what is the estimated completion date?	Yes	<p>Thank you for participating in the Public Information Centre for the Grimsby GO Station TRPAP and for your question.</p> <p>Timelines for major construction of the new Grimsby GO Station will be confirmed once a Contractor is formally engaged for the project. Environmental studies to support the Transit and Rail Project Assessment Process (TRPAP) are underway and will be completed prior to Metrolinx commencing construction.</p> <p>You may see some early site investigations, preparation activities or CN work within their rail corridor; however, formal station construction has not yet been scheduled. More detailed timelines will be shared with the community as they become available.</p> <p>We value the time you have taken to provide comments and feedback. This information will be recorded and will help inform the future of the proposed Grimsby GO Station.</p>	Y	01-Apr-26
47	13-Mar-26	Great idea to help with traffic congestion on the QEW Should have been done years ago	No	No response required		
48	13-Mar-26	I would love to see a Go Station at Grimsby. Without knowing the ridership stats, it is difficult to understand schedules. That is the biggest issue with the existing Confederation Go... need at least one train every 2 hours to be flexible enough to make sense. Not really interested in jumping on a bus transfer to fill in the gaps.	No	No response required		

Number	Date of Email	Comment	Reply Selected By Public (Y/N)	Response	Response Sent (Y/N)	Date of Response
49	12-Mar-26	Please consider a place to heat during winter. 1) Confederation has no place to warm part from one area near the accessibility waiting area. 2) More frequency during peak hours - currently hardly there is one train during peak hours! 3) please provide the timeline.	Yes	Thank you for participating in the Public Information Centre for the Grimsby GO Station TRPAP and for your question. Your feedback about providing warm, sheltered areas for customers will be considered during the station design process. Amenities such as shelters and waiting areas are reviewed as part of the environmental and design studies. At this time, Train service levels are under review and more information will be shared with the community as they become available. GO train service is dependent on ridership patterns and data and Metrolinx does not own the Lakeshore West rail corridor between Aldershot to Niagara Region. Current priority track use belongs to freight rail operators who own the track. Metrolinx will continue to make incremental changes into the future based on ridership demands, with the understanding that major rail and station infrastructure can take several years to complete. Timelines for major construction of the new Grimsby GO Station will be confirmed once a Construction Manager is formally engaged for the project. Environmental studies to support the Transit and Rail Project Assessment Process (TRPAP) are underway and will be completed prior to Metrolinx commencing construction. You may see some early site investigations, preparation activities or CN work within their rail corridor; however, formal station construction has not yet been scheduled. More detailed timelines will be shared with the community as they become available. We value the time you have taken to provide comments and feedback. This information will be recorded and will help inform the future of the proposed Grimsby GO Station.	Y	01-Apr-26
50	12-Mar-26	Would love to see a station added, but it needs to be a continuous route all the way to Union station, these transfers in Hamilton are what makes the current setup useless.	No	No response required		
51	12-Mar-26	We are residents of Smithville Ontario and are looking forward to access to Grimsby GO station. The plan you have laid out looks great off of Casablanca there and we hope there is lots of parking and a future bus loop for Niagara Transit to use as we are looking forward to being able to use a bus from Smithville to get to the station Many thanks for your time	No	No response required		

Grimsby GO Station Public Comments

Number	Date of Email	Comment	Reply Selected By Public (Y/N)	Response	Response Sent (Y/N)	Date of Response
52	12-Mar-26	Please speed it up. Why not build the Beamsville stop at the same time, it is much needed. Many commuters from Beamsville drive to Burlington now because of infrequent bus connections from Beamsville GO. It would relieve congestion on the QEW and have many environmental benefits. The morning GO buses are very full.	Yes	Thank you for participating in the online Public Information Centre for the Grimsby GO Station Transit and Rail Project Assessment Process (TRPAP). We value the time you have taken to provide comments and feedback. This information will be recorded and will help inform the future of the proposed Grimsby GO Station.	Y	01-Apr-26
53	12-Mar-26	The Grimsby GO train is needed immediately, of the highest priority for provincial cost savings. The vehicle congestion on the QEW is already very dangerous for driving and costly to the province for the continuous road repairs due to the very heavy volumes. The traffic pollution along that corridor is an increasing health care cost to the province for lung and other related respiratory and blood illnesses. We need the GO train now as a priority not billions on pleasure islands and highways too far north to alleviate any Toronto traffic.	No	No response required		
54	12-Mar-26	Makes a lot of sense to minimize traffic	Yes	Thank you for participating in the online Public Information Centre for the Grimsby GO Station Transit and Rail Project Assessment Process (TRPAP). We value the time you have taken to provide comments and feedback. This information will be recorded and will help inform the future of the proposed Grimsby GO Station.	Y	01-Apr-26
55	12-Mar-26	Let's go! We are so excited for this project. It's going to completely change lives for the better.	No	No response required		

Grimsby GO Station Public Comments

Number	Date of Email	Comment	Reply Selected By Public (Y/N)	Response	Response Sent (Y/N)	Date of Response
56	12-Mar-26	<p>Hello, I am very excited to see that the go station may finally be coming to Grimsby, it will cut my commute time to Toronto for work by 45 mins one way. Do we have insight into the frequency of trains at this point of time?</p> <p>Also, will it add bus connections to the Waterloo area? It will be a great addition as Waterloo has multiple universities and will immensely benefit students travelling from the Grimsby area significantly.</p> <p>Thanks,</p>	Yes	<p>Thank you for participating in the online Public Information Centre for the Grimsby GO Station Transit and Rail Project Assessment Process (TRPAP).</p> <p>GO Train service levels and GO Bus service connections from the Grimsby GO Station are still to be determined, and more information will be shared with the community as it becomes available. GO train service is dependent on ridership patterns and data and Metrolinx does not own the Lakeshore West rail corridor between Aldershot to Niagara Region. Current priority track use belongs to freight rail operators who own the track. Metrolinx will continue to make incremental changes into the future based on ridership demands, with the understanding that major rail and station infrastructure can take several years to complete.</p> <p>We value the time you have taken to provide comments and feedback. This information will be recorded and will help inform the future of the proposed Grimsby GO Station.</p>	Y	01-Apr-26
57	12-Mar-26	<p>Hi Niagara Region Transit / Grimsby Go team,I appreciate your efforts in bringing Go transit to Grimsby. I commute 5 days a week to Toronto, and having Go train in Grimsby would make my journey so much better.Congratulations on the commencement of the program. I hope to see the Go train stop in Grimsby soon/in coming years!Regards,</p>	No	No response required		
58	12-Mar-26	<p>Great to hear that the project is moving forward. It will be beneficial for residents in this area if the project is completed soon, as many commuters rely on the GO Train for work and currently have to drive to the Burlington or Hamilton stations, which is not very convenient.</p>	No	No response required		
59	12-Mar-26	<p>Please add me to your mailing list for the Grimsby GO project.</p>	No	No response required		
60	12-Mar-26	<p>This looks like a good plan. It's been a long time coming. I will be most concerned for pedestrian safety crossing over the service road, and how pedestrians might impact traffic. A pedestrian tunnel to separate them from the roadway would be worth considering.</p>	No	No response required		

Number	Date of Email	Comment	Reply Selected By Public (Y/N)	Response	Response Sent (Y/N)	Date of Response
61	12-Mar-26	Looks very positive so far. No mention of a walking bridge over the qew?	Yes	<p>Thank you for participating in the online Public Information Centre for the Grimsby GO Station Transit and Rail Assessment Process (TRPAP)</p> <p>While no pedestrian bridge of the QEW is proposed as part of the station, Niagara Region is making improvements to Casablanca Boulevard from the North Service Road to Main Street, the reconstruction project includes providing better active transportation facilities along this corridor to facilitate active transportation from the north side of the QEW to the south side.</p> <p>We value the time you have taken to provide comments and feedback. This information will be recorded and will help inform the future of the proposed Grimsby GO Station.</p>	Y	01-Apr-26
62	12-Mar-26	Hello..when do you anticipate The GO towards Niagara (St.Catharines) to be in service? Thank you....	Yes	<p>Thank you for participating in the online Public Information Centre for the Grimsby GO Station Transit and Rail Project Assessment Process (TRPAP). Timelines for major construction of the new Grimsby GO Station will be confirmed once a Contractor is formally engaged for the project. Environmental studies to support the Transit and Rail Project Assessment Process (TRPAP) are underway and will be completed prior to Metrolinx commencing construction. You may see some early site investigations, preparation activities or CN work within their rail corridor; however, formal station construction has not yet been scheduled. More detailed timelines will be shared with the community as they become available. We value the time you have taken to provide comments and feedback. This information will be recorded and will help inform the future of the proposed Grimsby GO Station.</p>	Y	01-Apr-26
63	12-Mar-26	We definitely need the Grimsby Go Train Station	Yes	<p>Thank you for participating in the online Public Information Centre for the Grimsby GO Station Transit and Rail Project Assessment Process (TRPAP). We value the time you have taken to provide comments and feedback. This information will be recorded and will help inform the future of the proposed Grimsby GO Station.</p>	Y	01-Apr-26
64	11-Mar-26	I would like to bring the attention to the population growth in the area along with proposed housing plans. This is a big opportunity to make something useful & feasible for the	Yes	<p>Thank you for participating in the online Public Information Centre for the Grimsby GO Station Transit and Rail Project Assessment Process (TRPAP). We value the time you have taken to provide comments and</p>	Y	01-Apr-26

Grimsby GO Station Public Comments

Number	Date of Email	Comment	Reply Selected By Public (Y/N)	Response	Response Sent (Y/N)	Date of Response
		community not just limited to Grimsby but even Lincoln, West Lincoln, Smithville & surrounding areas.		feedback. This information will be recorded and will help inform the future of the proposed Grimsby GO Station.		
65	11-Mar-26	The Grimsby station is long overdue and I'm happy to see that there is some movement. Looking forward to future developments!	No	No response required		
66	11-Mar-26	This plan has been discussed for literally years. How long will this stage take and then how long after that before the stations are completed and ready for use? Grimsby has no public bussing, and is in DIRE need of connecting beyond its borders for many reasons(such as employment and educational opportunities for its residents, the youth in particular). This needs to happen and in short order. Everyone I've spoken with has very little faith that the powers that be will pull this off. Your track record hasn't been very good so far. All talk and promises over a very prolonged period of time. It's well passed time to make this happen.	Yes	Thank you for participating in the Public Information Centre for the Grimsby GO Station TRPAP and for your question. Timelines for major construction of the new Grimsby GO Station will be confirmed once a Contractor is formally engaged for the project. Environmental studies to support the Transit and Rail Project Assessment Process (TRPAP) are underway and will be completed prior to Metrolinx commencing construction. You may see some early site investigations, preparation activities or CN work within their rail corridor; however, formal station construction has not yet been scheduled. More detailed timelines will be shared with the community as they become available. We value the time you have taken to provide comments and feedback. This information will be recorded and will help inform the future of the proposed Grimsby GO Station.	Y	01-Apr-26
67	11-Mar-26	Just please do it! We've been waiting for a GO train station for years!	No	No response required		

Number	Date of Email	Comment	Reply Selected By Public (Y/N)	Response	Response Sent (Y/N)	Date of Response
68	11-Mar-26	<p>Hello,I have been a resident of Smithville (West Lincoln in west Niagara and south of Grimsby) for ten years. My family and me moved here from Mississauga where we appreciated access to GO services!If there is one thing lacking in West Niagara, it is commuter transit! Having a GO train station in Grimsby would alleviate the need to drive a car from Smithville, all the way to Burlington, in order to catch a train to downtown Toronto (workplace).When our family moved to Smithville in 2016 (ten years ago), the signage communicating the Grimsby station was indeed exciting. Then we had a change in provincial government and things appeared to come to a standstill.My concern is that surface parking only will not meet the needs of those that come from Beamsville, Smithville and Grimsby to commute to the GTA and everywhere in between.The design needs to anticipate the growth that is set to take off in West Niagara and the commuting needs of those who live here. We need to consider parking house style parking for this stop to be a commuter success!With thanks,</p>	Yes	<p>Thank you for participating in the online Public Information Centre for the Grimsby GO Station Transit and Rail Project Assessment Process (TRPAP). Parking needs are also being evaluated as part of the station design. The design is planning to accommodate future growth and demand at the station. Your comments about planning for future growth and considering structured parking will be documented and reviewed as design work progresses. The goal is to ensure the station supports long-term ridership and provides safe, accessible, and convenient options for commuters across the region.We value the time you have taken to provide comments and feedback. This information will be recorded and will help inform the future of the proposed Grimsby GO Station.</p>	Y	01-Apr-26

Grimsby GO Station Public Comments

Number	Date of Email	Comment	Reply Selected By Public (Y/N)	Response	Response Sent (Y/N)	Date of Response
69	11-Mar-26	I used to take Via from Toronto to Grimsby a few years ago. What on earth is the hold up now? Sincerely- this is so overdue and necessary! Thanking you!	Yes	<p>Thank you for participating in the Public Information Centre for the Grimsby GO Station TRPAP and for your question.</p> <p>Timelines for major construction of the new Grimsby GO Station will be confirmed once a Contractor is formally engaged for the project. Environmental studies to support the Transit and Rail Project Assessment Process (TRPAP) are underway and will be completed prior to Metrolinx commencing construction.</p> <p>You may see some early site investigations, preparation activities or CN work within their rail corridor; however, formal station construction has not yet been scheduled. More detailed timelines will be shared with the community as they become available.</p> <p>We value the time you have taken to provide comments and feedback. This information will be recorded and will help inform the future of the proposed Grimsby GO Station.</p>	Y	01-Apr-26
70	11-Mar-26	We would love to have Go train station in our town for better accessibility.	Yes	<p>Thank you for participating in the online Public Information Centre for the Grimsby GO Station Transit and Rail Project Assessment Process (TRPAP). We value the time you have taken to provide comments and feedback. This information will be recorded and will help inform the future of the proposed Grimsby GO Station.</p>	Y	01-Apr-26
71	11-Mar-26	Hello, I think this GO Station would be beneficial for Niagara residents. Many people in the Niagararegion commute to the GTA. Can't wait. Regards	No	No response required		
72	11-Mar-26	Thank you for finally reaching this stage. Please fast track this and get the station approved and built ASAP. It has dragged on far too long.	No	No response required		
73	11-Mar-26	Me and my husband are very happy to hear that the go train project to Grimsby is moving. We live in Grimsby, and work in Burlington and Oakville. Every day we drive the highway, expending lots of money in gas, and getting stack in traffic. We Really welcome the Grimsby Go Train!!!	No	No response required		

Number	Date of Email	Comment	Reply Selected By Public (Y/N)	Response	Response Sent (Y/N)	Date of Response
74	11-Mar-26	<p>To Whom it may concern, I wanted to share some feedback about the Grimsby Go proposition. My husband and I moved to Grimsby from Mississauga in 2021 and were so excited to see the big sign that said “coming soon” for the Grimsby Go station. After a few years here that sign was removed and we started to lose hope. We moved to Grimsby to be closer to my husband’s aging parents and because we enjoyed the pace of life out here. We wanted to be far from Toronto, however we have found ourselves having to make many trips out to Toronto over the years. Whether for concerts, plays or other exciting experiences or for many doctors appointment and specialists while navigated chronic health issues. We more often than not have chosen to take the Go train. But living in Grimsby we have had to travel to another Go Train station, often Burlington Go for the convenience to the highway. Having a station in Grimsby would eliminate at least 20 minutes of our driving commute, which is more sustainable and eliminates pollution. I could list more reasons why this would be a great thing all around. Not to mention creating more jobs. I’m sure you’re going to get a lot of negativity about this but sadly Grimsby is a town that doesn’t want to change and doesn’t like outsiders. But there are more people like my husband and myself moving here all the time and the stubborn ones won’t be around for long. I hope you take age into consideration as those that will oppose this are the people that don’t take the Go Train anyway and won’t be affected by this at all so their negative views shouldn’t outweigh the positive. This will be the best addition to Grimsby.</p>	No	No response required		
75	11-Mar-26	<p>I’m all for this project. It has taken since 2011. Please don’t let Metrolinx inefficiency get ruin another Ontario transit project. Build this faster.</p>	No	No response required		

Number	Date of Email	Comment	Reply Selected By Public (Y/N)	Response	Response Sent (Y/N)	Date of Response
76	11-Mar-26	Good evening, just saw the ad in Facebook for TONIGHTS meeting, which obviously too late for us to attend! My husband and I moved from Burlington, with the knowledge of a train station being available and that was six years ago! We were so excited that we would have the same convenience in travel that we had previously. We would be so happy to see and definitely use this form of transport, easily going back and forth to our family in Burlington and Toronto. Please sign our names in FAVOUR of this project going forward. Much obliged!	No	No response required		
77	11-Mar-26	Hello, I've lived in Grimsby since I was born. And since I born I've had to drive to Burlington to take the go train I think that should have changed 20 years ago. Would be nice to get one in our back yard :) Looking forward to seeing progress...	No	No response required		
78	11-Mar-26	We need this station badly	Yes	Thank you for participating in the online Public Information Centre for the Grimsby GO Station Transit and Rail Project Assessment Process (TRPAP). We value the time you have taken to provide comments and feedback. This information will be recorded and will help inform the future of the proposed Grimsby GO Station.	Y	01-Apr-26
79		Excited for the future Grimsby GO station. I think fixed bus routes for this station are definitely required. I may suggest 2-3 bus routes. The first connecting Grimsby GO down Livingston avenue and Main street W+E to Niagara West YMCA with a bus terminal there. The infrastructure is basically already built there. The second route going up Casablanca Blvd to North service road, down Olive street then going down Lake street before turning right at Bartlett avenue then connecting to Niagara West YMCA that way and same route back. Third possible route connects both by going up Ontario street past the current Via rail station and taking a combination of both bus routes if possible. This not only provides service to residents north and south of the QEW but it is also easy to operate as each route takes roughly 20 min one way connecting Grimsby GO to Niagara	Yes	<p>Thank you for participating in the online Public Information Centre for the Grimsby GO Station Transit and Rail Project Assessment Process (TRPAP).</p> <p>Niagara Transit is responsible for providing local transit in collaboration with the Town and currently provides micro transit service in Grimsby that can booked to provide transit from the station into Grimsby. There are also plans for future fixed route bus service from the station to communities east and west of Grimsby.</p> <p>We value the time you have taken to provide comments and feedback. This information will be recorded and will help inform the future of the proposed Grimsby GO Station.</p>	Y	01-Apr-26

Grimsby GO Station Public Comments

Number	Date of Email	Comment	Reply Selected By Public (Y/N)	Response	Response Sent (Y/N)	Date of Response
		West YMCA so hourly service is definitely possible. Thank you.				
80	11-Mar-26	Hi I wanted to know, once approval to proceed with construction is received, say in June 2026, the tentative timeline to complete the construction and commissioning of the station. Kind Regards Grimsby resident	Yes	Thank you for participating in the Public Information Centre for the Grimsby GO Station TRPAP and for your question. Timelines for major construction of the new Grimsby GO Station will be confirmed once a Contractor is formally engaged for the project. Environmental studies to support the Transit and Rail Project Assessment Process (TRPAP) are underway and will be completed prior to Metrolinx commencing construction. You may see some early site investigations, preparation activities or CN work within their corridor; however, formal station construction has not yet been scheduled. More detailed timelines will be shared with the community as they become available. We value the time you have taken to provide comments and feedback. This information will be recorded and will help inform the future of the proposed Grimsby GO Station.	Y	01-Apr-26

Number	Date of Email	Comment	Reply Selected By Public (Y/N)	Response	Response Sent (Y/N)	Date of Response
81	11-Mar-26	Just had a read through the latest display boards and am happy to provide input. - First, this has been delayed way too long, and I sincerely hope the station is built when I'm still alive. Please expedite the project so those of us who are looking forward to it can actually enjoy it in our lifetimes. - Secondly, please ensure pedestrian access – every access point today is vehicle specific and you take your life in your hands walking anywhere near the Gateway and GO bus stop. - Lastly, not everyone in town has a car and the majority of the population is in the east end or central part of town. Walking is not an option for many. Please ensure that there is a local bus that can take people to the GO station. Preferably, have the HSR and St. Catherines transit loop through town frequently to help those who don't drive and to encourage people to leave their vehicles at home. PS I grew up in town and had to leave in 1973 as I couldn't access employment without a vehicle. And we at least had Grey Hound bus service and VIA trains then. Having moved back in 2020, I have been enormously disappointed that there are even fewer options in 2026 than there were 53 years ago. It's time!	Yes	Thank you for participating in the Public Information Centre for the Grimsby GO Station TRPAP and for your questions. Timelines for major construction of the new Grimsby GO Station will be confirmed once a Contractor is formally engaged for the project. Environmental studies to support the Transit and Rail Project Assessment Process (TRPAP) are underway and will be completed prior to Metrolinx commencing construction. You may see some early site investigations, preparation activities or CN work within their rail corridor; however, formal station construction has not yet been scheduled. More detailed timelines will be shared with the community as they become available. As part of the design, Covered Bike Parking, a vehicle Pick Up/Drop Off, bus bays and sidewalk connection to municipal infrastructure are all being included in the station design to enable access to those who do not drive. Niagara Transit is responsible for providing local transit in collaboration with the Town and currently provides micro transit service in Grimsby that can be booked to provide transit from the station into Grimsby. There are also plans for future fixed route bus service from the station with connections to communities to the east and west. We value the time you have taken to provide comments and feedback. This information will be recorded and will help inform the future of the proposed Grimsby GO Station.	Y	01-Apr-26
82	11-Mar-26	Please, please, the only request I have is to get it done sooner than later. We waited too long for this!!	No	No response required		
83	11-Mar-26	This is such a great move. It will be beneficial to so many commuters from Grimsby and nearby areas. With back to office this project should be promoted and prioritized by the government for better connectivity to GTA and Niagara	No	No response required		
84	11-Mar-26	Happy to hear progress of this project, it is been a long awaited one! I travel through QEW everyday up to Toronto it's so much traffic leading to pollution - this project will help everyone with reducing carbon foot print	Yes	Thank you for participating in the online Public Information Centre for the Grimsby GO Station Transit and Rail Project Assessment Process (TRPAP). We value the time you have taken to provide comments and feedback. This information will be recorded and will help inform the future of the proposed Grimsby GO Station.	Y	01-Apr-26

Number	Date of Email	Comment	Reply Selected By Public (Y/N)	Response	Response Sent (Y/N)	Date of Response
85	11-Mar-26	Very happy that we are getting a stop here for the go train. It's been a long drive for me to go to Toronto for my specialist.	Yes	Thank you for participating in the online Public Information Centre for the Grimsby GO Station Transit and Rail Project Assessment Process (TRPAP). We value the time you have taken to provide comments and feedback. This information will be recorded and will help inform the future of the proposed Grimsby GO Station.	Y	01-Apr-26
86	11-Mar-26	<p>Hello.</p> <p>I am a senior who loves to use public transit when convenient or even somewhat inconvenient.</p> <p>I would like to see the construction and implementation of a pathway dedicated solely to bikes/pedestrians following along the side of the rail tracks (from 50 Road to Bartlett) which would provide access into local residential areas and bridges over the QEW. As there is no local transit from point to point, this dedicated pathway would highly benefit the community, ease traffic congestion on both local roads and highways, ease pollution counts, and be a route safe from road traffic.</p> <p>The town of Grimsby population appears to be health conscious and the pathway will definitely be utilized as a safe commute without the necessity of dedicated bike lanes on existing thoroughfares and their inherent cost, danger and driver aggravation resulting in accidents and personal injuries.</p> <p>Perhaps Metrolinx might consider this type of pathway for the entire stretch between Centennial Parkway and Niagara Falls. Given our extended biking season in the Niagara peninsula there would be few days during any given year when the path would not be used by commuters.</p> <p>Thank you.</p>	Yes	<p>Thank you for participating in the online Public Information Centre for the Grimsby GO Station Transit and Rail Project Assessment Project (TRPAP)</p> <p>As part of the Grimsby station design, Covered Bike Parking, a vehicle Pick Up/Drop Off, bus bays and sidewalk connection to municipal infrastructure are all being included in the station design to enable access for those who choose to access the station without driving.</p> <p>Niagara Transit is responsible for providing local transit in collaboration with the Town and currently provides micro transit service in Grimsby that can be booked to provide transit from the station into Grimsby. There are also plans for future fixed route bus service from the station with connections to communities to the east and the west.</p> <p>We value the time you have taken to provide comments and feedback. This information will be recorded and will help inform the future of the proposed Grimsby GO Station.</p>	Y	01-Apr-26

Grimsby GO Station Public Comments

Number	Date of Email	Comment	Reply Selected By Public (Y/N)	Response	Response Sent (Y/N)	Date of Response
87	11-Mar-26	I would like to see a stop at Ontario St in Grimsby this would be the CN station it would be great to have Go trains stop there for a trial during the summer seas station is open as someone who has lived in Grimsby for 60 years I know it would be popular . The property is owned by CN and there is a level platform in the Thank you for your time.	Yes	Thank you for participating in the online Public Information Centre for the Grimsby GO Station Transit and Rail Project Assessment Process (TRPAP). A downtown location for the station was reviewed in the 2011 Niagara Rail Expansion Class Environmental Assessment and was not the preferred site due to constraints related to providing access, long-term station expansion, and train servicing needs. However, there is Niagara Transit micro transit available in Grimsby with the expectation of fixed route service in the future to provide connectivity from the GO Station to the downtown core. We value the time you have taken to provide comments and feedback. This information will be recorded and will help inform the future of the proposed Grimsby GO Station.	Y	01-Apr-26
88	11-Mar-26	Hello, Will there be an email mailing list associated with the project? Thanks	Yes	<p>Thank you for participating in the online Public Information Centre for the Grimsby GO Station Transit and Rail Project Assessment Process (TRPAP).</p> <p>This information will be recorded and will help inform the future of the proposed Grimsby GO Station. Metrolinx is improving and building an affordable, integrated and sustainable transit network that connects communities to the things that matter most to them.</p> <p>Please subscribe in the URL below to stay up to date with the latest news, progress announcements and construction updates from Metrolinx:  <a href="http://www.metrolinx.com/en/subscribe-to-emails">www.metrolinx.com/en/subscribe-to-emails</a></p>	Y	01-Apr-26
89	11-Mar-26	Hello , Being a daily commuter to and from from my home in Grimsby to workplace Toronto this is much needed .	Yes	Thank you for participating in the online Public Information Centre for the Grimsby GO Station Transit and Rail Project Assessment Process (TRPAP). We value the time you have taken to provide comments and feedback. This information will be recorded and will help inform the future of the proposed Grimsby GO Station.	Y	01-Apr-26
90	11-Mar-26	Get it done!!! This is so slow. No more surveys or studies.	Yes	Thank you for participating in the online Public Information Centre for the Grimsby GO Station Transit and Rail Project Assessment Process (TRPAP). We value the time you have taken to provide comments and feedback. This information will be recorded and will help inform the future of the proposed Grimsby GO Station.	Y	01-Apr-26

Number	Date of Email	Comment	Reply Selected By Public (Y/N)	Response	Response Sent (Y/N)	Date of Response
91	06-Mar-26	Good evening Is there someone I can speak to by phone early next week for an article on what this is all about? Thanks Niagara This Week	Yes	[Note for consultation record: Metrolinx Media relations team provided response]		01-Apr-26
92	18-Mar-26	Get this open asap! And the Beamsville station too! What is the hold up? To have trains pass through here and not give service to grimaby/lincoln makes zero sense.	No	No response required		
93	18-Mar-26	Let's 'GO' Let's expedite the project and have it operational within a realistic time frame. The sooner we prioritize Public transit this helps elevate road congestion.	No	No response required		
94	18-Mar-26	Looks like you are doing the right things. This is long overdue. Hope it's operational before I get too old to use it. Good luck with the process and the project!	No	No response required		
95	18-Mar-26	My issues with how we implement high speed rail is two fold: 1. We build platforms without accompanying it with zoning changes in the immediate vicinity of the station. They often remain zoned as single family houses for decades after the station is built. 2. We build stations that are not "destinations" but instead are used solely as commuter stations. This goes hand in hand with point 1, but is more focused on what each station could be. Centres for art/religion/parks/recs/community centres all in one, or even a short walk away from the station would drastically improve the lives of everyone living near or at the station. Each station would be different and not cookie cutter parking lots for commuters to go to downtown offices, but instead, community hubs where people of one neighbourhood can easily visit and engage with the other. To build infrastructure without this community aspect space and solely for 9-5s to get downtown defeats the purpose of rapid transit.	Yes	Thank you for participating in the online Public Information Centre for the Grimsby GO Station Transit and Rail Project Assessment Process (TRPAP).  A downtown location for the station was reviewed in the 2011 Niagara Rail Expansion Class Environmental Assessment and was not the preferred site due to constraints related to providing access, long-term station expansion, and train servicing needs. However, there is Niagara Transit on-demand service available in Grimsby with the expectation of fixed route service in the future to provide connectivity from the GO Station to the downtown core.  We value the time you have taken to provide comments and feedback. This information will be recorded and will help inform the future of the proposed Grimsby GO Station.	Y	01-Apr-26

Number	Date of Email	Comment	Reply Selected By Public (Y/N)	Response	Response Sent (Y/N)	Date of Response
96	18-Mar-26	I am happy to know that work towards the Grimsby GO station is happening. We have not heard anything since the project was revived just before the last provincial election. What is also important is for the GO train schedule to increase to include the needs of Niagara residents who want to travel towards Toronto to arrive there before noon on weekends! We need more frequent GO train service between Niagara and Toronto - weekdays and weekends.	No			
97	18-Mar-26	Yes its been FAR Toooo Long . The huge board on the Casablanca by the Service road has been up for literally years finally it's I guess it's down now. This is way overdue. We used to have a train station that would stop right outside the restaurant at the rail house years ago and it's taking a long time to get To us again.	Yes	Thank you for participating in the online Public Information Centre for the Grimsby GO Station Transit and Rail Project Assessment Process (TRPAP). We value the time you have taken to provide comments and feedback. This information will be recorded and will help inform the future of the proposed Grimsby GO Station.	Y	01-Apr-26
98	18-Mar-26	<p>Good Afternoon,</p> <p>The following is our feedback to the Region of Niagara for the Grimsby GO Station Online PIC presentation of March 11, 2026.</p> <p>2. In the Process Flow Chart timeline slide 9 below we see a fast path delivery date for the Grimsby GO Station TPAP Approval, set for June 2026.</p> <p>The 'Project Approval' for the TPAP is a fundamental milestone to get shovels in the ground. It gives developers the green light to engage in funding opportunities to start the business of building homes. It eliminates the threat of further delays to the project because the Province has committed to fund the infrastructure surrounding the GO Station and will issue RFP's for GO Station construction to begin.</p> <p>Grimsby can expect a surge in development applications starting by 2027 after the TPAP is approved.</p> <p>Figure - TRPAP Process Flow Chart graphic</p>	Yes	See response below, second submission was an addendum to the first submission	Y	01-Apr-26

Number	Date of Email	Comment	Reply Selected By Public (Y/N)	Response	Response Sent (Y/N)	Date of Response
		<p>3. The Project Overview slide 4 below provides a listing of in-scope infrastructure items being considered for the Grimsby GO Station. Notable is that Grade Separation is absent from the list. Although a very expensive add-on, it would be best considered for the initial build rather than as a future consideration:</p> <p>The existing Casablanca Blvd QEW interchange will be completely rebuilt as part of the GO Station Project. Why not incorporate the Grade Separation bridgework during the rebuilding process when closures and traffic upset will already be on hand, rather than have a separate new major project causing a repeat of road closures and further traffic upset year(s) later - when GO Station traffic will have peaked.</p> <p>Keep in mind there is existing CN freight train traffic at the Casablanca Blvd level crossing impacting auto / cyclist / pedestrian traffic at the (GO Station) interchange.</p> <p>The plan is to build the Grimsby GO Train Station with the Metrolinx GO "Full Service" model as well as the Province's "Destination Niagara Strategy" in mind.</p> <p>These strategic Province of Ontario initiatives will compound existing high rush hour traffic conditions at the Casablanca Blvd QEW interchange and surrounding access routes:</p> <p>The Lakeshore West GO line aims for 15-minute or better, all-day, two-way "Full Service" trains between Union Station and Niagara Falls.</p> <p>Figure - AI overview</p> <p>The Province has promoted its "Destination Niagara</p>				

Number	Date of Email	Comment	Reply Selected By Public (Y/N)	Response	Response Sent (Y/N)	Date of Response
		<p>Strategy" - a multi-billion-dollar plan to transform the region into a year-round, world-class tourism hub, aiming to attract 25 million visitors annually and boost the local economy by \$3 billion. This initiative will greatly increase ridership and traffic of GO Trains along the Lakeshore West Line at the Niagara GO Stations and beyond.</p> <p>Grade Separation for the Grimsby GO Station should be a primary consideration for the initial opening day build despite the cost / funding implications.</p> <p>Figure - Project Overview</p> <p>Although plans for all GO Stations ensure full accessibility to the platform and amenities (such as was the case for the Confederation GO Station) this online PIC does not explicitly make that statement.</p> <p>4. The Town of Grimsby planning department is well into the development of their Official Plan (OP) document.</p> <p>Both, the Grimsby OP and the Metrolinx Grimsby GO Station TPAP documents under development and are both scheduled to be approved in July 2026.</p> <p>The development for the Grimsby GO Station TPAP currently under way is largely based on Grimsby's Official Plan Amendment (OPA) 6 adopted in 2018 as well as from other completed 'Previous Studies' listed on Slide 8.</p> <p>The sequence of approvals for a GO Station TPAP and an OP have no legal order requirement; they are independent of each other.</p> <p>AI search result states "For funding certainty and development coordination, municipalities and Metrolinx</p>				

Number	Date of Email	Comment	Reply Selected By Public (Y/N)	Response	Response Sent (Y/N)	Date of Response
		<p>usually try to align the two processes".</p> <p>Figure - AI summary)</p> <p>Would there be benefit to delay the Grimsby OP finalization until after the Grimsby GO Station TPAP is approved?</p> <p>5. Finalizing the Grimsby OP after the Grimsby GO Station TPAP would provide benefit by:</p> <p>Avoiding to make formal amendments to the Official Plan (OPA's) that relate to details finalized later in the TPAP.</p> <p>Assist with Transit-Oriented Development (TOD) planning by serving as the critical regulatory bridge between infrastructure engineering and urban land-use strategy.</p> <p>An example would be to consider incorporating a "1.5 km tier model" in the Grimsby OP to facilitate a broader development zone. This model facilitates the Provinces mandate to include "missing middle" housing within Major Transit Station Areas (MTSAs) and Protected Major Transit Station Areas (PMTSAs).</p> <p>Figure - AI summary)</p> <p>The map below shows the PMTSA delineated in the Grimsby Draft OP with an area confined within an 800 meter radius or less; this map could be updated to show the 1.5 km tier model after the TPAP is approved when the GO Station platform is defined.</p> <p>Much of the delineated PMTSA in the draft Grimsby OP is restricted by existing built up areas and protected lands. Extending the boundary to a 1.5 km tier (where lands are available) would allow for the building of housing in a larger PMTSA zone - with a greater mix of housing.</p> <p>The delineated PMTSA in the map below is the colourized portion outlined with the heavy intermittent dashed black line. The Hunter Road limit to the west shown on the map is less than 800 meters from the GO Station platform and could be</p>				

Number	Date of Email	Comment	Reply Selected By Public (Y/N)	Response	Response Sent (Y/N)	Date of Response
		<p>extended west to a 1.5 km tier - between the tracks and Winston Rd. See Point 6 below regarding the "1.5 km tier model".</p> <p>Figure - Town of Grimsby's Schedule C4: Protected Major Transit Station Character Areas</p> <p>6. In the red box below is an AI search result for the framework of a realistic density structure applicable for the Grimsby GO Station.                      Note the allocation for the "missing middle" intensification in the 800 m to 1.5 km zone.                      Also note the comment in the last line of the box below "This is exactly how many new Transit-Oriented Communities are being planned around GO stations".                      We have seen the "1.5 km tier model" for "missing middle" intensification in place for the delineated PMTSA at the Aldershot and Bowmanville GO Stations. Both of these GO Stations have their delineated PMTSA extending to 1.5 km from the GO Station platform.                      The "1.5 km tier model" would best be incorporated into the Grimsby OP once the approved TPAP Environmental Project Report (EPR) defines the GO Station footprint and platform. Having the TPAP approved before the Grimsby OP would eliminate the need to backtrack and undergo an Official Plan Amendment (OPA) development project, approval and adoption.</p> <p>Figure - AI summary</p> <p>Thanks</p>				

Grimsby GO Station Public Comments

Number	Date of Email	Comment	Reply Selected By Public (Y/N)	Response	Response Sent (Y/N)	Date of Response
99	20-Mar-26	Good morning, An important add-on for point 6 in our original email forward below, is the actual mapping for the Bowmanville West Urban Centre and MTSA Secondary Plan Update + Aidershot Go MTSA OPA showing the "1.5 km tier model" incorporated. An important add-on for point 6 in our original email forward below, is the actual mapping for the Bowmanville West Urban Centre and MTSA Secondary Plan Update + Aidershot Go MTSA OPA showing the "1.5 km tier model" incorporated. In light of this, can Grimsby incorporate the "1.5 km tier model" for its MTSA mapping in its new Official Plan? Figures included in comment.	Yes	Thank you for participating in the online Public Information Centre for the Grimsby GO Station Transit and Rail Project Assessment Process (TRPAP). MTSA boundaries are defined based on land use planning policies in provincial and town land use planning documents including the Official Plan. The TRPAP identifies and assesses potential environmental impacts of the proposed station. It will also identify mitigation measures and future commitments to avoid or reduce negative impacts, it does not make recommendations with respect to changes in land use. We value the time you have taken to provide comments and feedback. This information will be recorded and will help inform the future of the proposed Grimsby GO Station.	Y	01-Apr-26
100	19-Mar-26	Super excited to hear about this track FINALLY starting back up to potentially have the GO train flow through Grimsby to Toronto. LONG OVERDUE. It was promised years ago, one of the reasons I moved to Grimsby. Full endorsement!	No			

Number	Date of Email	Comment	Reply Selected By Public (Y/N)	Response	Response Sent (Y/N)	Date of Response
101	19-Mar-26	<p>Hi there! I am a Niagara resident, and I have a few comments regarding the listed Public Information Centre materials for the future Grimsby GO station. One of them directly relates to the ongoing TRPAP, while two are more general station design considerations.1. The Cultural and Natural Heritage Protection Buffer is welcome. However it should not be grass landscaping, rather it should be planted to become a natural self-sustaining vegetated area. This would align with the Natural Environment policies of the Draft Grimsby Official Plan which is slated to come into effect later this year, specifically policies 7.1.1,7.1.2, 7.1.3.1, and 7.1.4. This would serve to expand the boundary of the existing woodlot and would be a nice improvement to the natural system in Grimsby.2. The existing bus loop should remain and access should be provided from the new station. A new bus loop should NOT be built on the south side. Westbound buses already take a very long time to enter and exit the highway due to the design of the Casablanca Boulevard interchange. A further bus loop would only increase travel time for bus users even more. Alternatively, this issue should be comprehensively addressed through the ongoing Casablanca Blvd redesign.3. Safe bicycle access to the new station must be a priority for regional and provincial road redesigns.I trust you will consider these comments as the project moves forward. Thank you very much!</p>	Yes	<p>Thank you for participating in the online Public Information Centre for the Grimsby GO Station Transit and Rail Project Assessment Process (TRPAP). Ecological buffers will be designed with consideration for provincial and municipal policies in consultation with the Region of Niagara, the Niagara Region Conservation Authority and Metrolinx in accordance with their policies and guidelines. As part of the Grimsby GO Station design process, a detailed landscape plan will be developed to assess opportunities for plantings and other landscape features for the station site. Additionally, covered Bike Parking, a vehicle Pick Up/Drop Off, bus bays and sidewalk connection to municipal infrastructure are all being included in the station design to enable access for those who choose to access the station without driving. Niagara Region has planned for this station in the design for the reconstruction of Casablanca Boulevard. Full build out has already identified the required lane configurations and traffic signal requirements based on anticipated traffic. Niagara Transit is also responsible for providing local transit in collaboration with the Town and currently provides micro transit service in Grimsby that can be booked to provide transit from the station into Grimsby. There are also plans for future fixed route bus service from the station to communities east and west of Grimsby.We value the time you have taken to provide comments and feedback. This information will be recorded and will help inform the future of the proposed Grimsby GO Station.</p>	Y	01-Apr-26

Number	Date of Email	Comment	Reply Selected By Public (Y/N)	Response	Response Sent (Y/N)	Date of Response
102	19-Mar-26	<p>Hello:I have the following comments regarding the Grimsby GO Station TRPAP online PIC information:1. Minimal services, such as provided at Acton station, would be sufficient to begin service. These should include heated shelters, electronic payment (not staffed) and full accessibility for pedestrians, cyclists, motorists and transit users. Washrooms would be ideal but I understand that bringing in both water and sewer lines would greatly increase the cost and timeframe.2. A major short-term impact of the GO station will be traffic disruptions due to construction. Of particular concern is the potential that road which is about to be reconstructed (specifically Casablanca Boulevard between the South Service Road and Livingston Avenue) will need to be disturbed again. Clearly the mitigating measure would be for the Region and Town to incorporate likely requirements (such as turning lanes, traffic signal infrastructure and potentially storm water connections) so that a brand new roadway does not need to be torn up. These requirements need to be identified immediately, as projects in are in the detailed design phase.3. The impact on the residents of Emily Street, Rosedale Street and Livingston Avenue west of Casablanca will be significant. These are likely to include traffic, noise and light and potentially vibration and storm water. Has there been any consideration of extending the urban boundary of Grimsby to encompass this residential area and to enable future rezoning for high-density development? At least this would allow homeowners on these streets to sell their properties at a profit instead of reducing their value. It would also be highly logical in terms of proximity of development to the GO station.4. In this expedited approval schedule I am unclear about future public input, as would be typical in Environmental Assessment and Detailed Design phases. In case this is the only opportunity to provide comments before construction:1. Minimal services, such as provided at Acton station, would be sufficient to begin service. These should include heated shelters,</p>	Yes	<p>Thank you for participating in the Public Information Centre for the Grimsby GO Station Transit and Rail Project Assessment Process (TRPAP). We appreciate your comments and the time you've taken to share your experience.As part of the Grimsby station design, Covered Bike Parking, passenger amenities including shelters and payment systems, a vehicle Pick Up/Drop Off, bus bays and sidewalk connection to municipal infrastructure are all being included. Niagara Region has planned for this station in the design for the reconstruction of Casablanca Boulevard, there will be no need to disturb the road again after reconstruction in order to accommodate station traffic. Full build out has already identified the required lane configurations and traffic signal requirements based on anticipated traffic.As part of the TRPAP, we are assessing potential effects related to noise and site drainage, and mitigation measures will be developed where impacts are identified. Noise and vibration impact assessments are being undertaken to help determine what mitigation measures tied to temporary construction activities and permanent operations may be required. Regarding water runoff, the project team is reviewing existing drainage patterns and local hydrology at a concept level to support the TRPAP. As design advances, stormwater management will be appropriately reviewed and addressed to not worsen existing conditions and support the station construction. While impacts to light pollution will not be determined during the TRPAP phase of the project, as design progresses the Metrolinx station lighting design (including the proposed parking area) will be completed in a manner to minimize glare and light to adjacent lands.Parking needs are also being evaluated as part of the station design. The design is planning to accommodate future growth and demand at the station. Your comments about planning for future growth and considering structured parking will be documented and reviewed as design work progresses. The goal is to ensure the station supports long-term ridership and provides safe, accessible, and convenient options for commuters across the region.We value the time you have taken to provide comments and feedback. This information will be recorded and will help inform the future of the proposed Grimsby GO Station.</p>	Y	01-Apr-26

Grimsby GO Station Public Comments

Number	Date of Email	Comment	Reply Selected By Public (Y/N)	Response	Response Sent (Y/N)	Date of Response
		<p>electronic payment (not staffed) and full accessibility for pedestrians, cyclists, motorists and transit users. Washrooms would be ideal but I understand that bringing in both water and sewer lines would greatly increase the cost and timeframe.2. An attempt should be made to anticipate the configuration of a future full service station and to adjust the initial plan to allow for this wherever possible.3. Both sidewalks and bicycle lanes on both sides of Livingston Avenue should be continued west of Casablanca and through the parking area to the platform. One side only is not sufficient for safety reasons.4. A transit pickup area should be sufficiently sized to allow for multiple services. For example, a GO bus, several NRT vehicles and potentially even a HSR bus should be able to be accommodated simultaneously. This would allow for easy implementation within the near future.5. The passenger drop off/ pick up should be generously sized, and allow for ride-sharing vehicles. At opening there will be few transit users and in winter there will be few cyclists and pedestrians.6. Similarly, the parking lot should be sized for the maximum expected growth of ridership, as the incremental cost will be smallest at this stage as opposed to through a separate project to extend.I look forward to seeing this project go forward and its impact on the Town of Grimsby.</p>				
103	19-Mar-26	<p>We definitely need GO Transit in Grimsby and it is very long overdue! We have no local transportation and this would reduce the cars on the highways.</p>	No	No response required		

Number	Date of Email	Comment	Reply Selected By Public (Y/N)	Response	Response Sent (Y/N)	Date of Response
104	19-Mar-26	Please get the Grimsby GO station completed ASAP to alleviate QEW terrible congestion and the accompanying pollution with health care costs. Please increase the frequency of the existing train schedules to and from Confederation. If you rely on current ridership statistics they will be very misleading. People would take the GO if it was available but the infrequent trains past Burlington or even West Harbour are stopping anyone from riding the GO. For example, it took 3 sequential trains and 2.5 hours for me to get from Exhibition to Confederation last Saturday.	Yes	Thank you for participating in the Public Information Centre for the Grimsby GO Station Transit and Rail Project Assessment Process (TRPAP). We appreciate your comments and the time you've taken to share your experience. Improving transit access and reducing congestion on the QEW are key goals of the proposed Grimsby GO Station. At this time, Train service levels are under review and more information will be shared with the community as they become available. GO train service is dependent on ridership patterns and data and Metrolinx does not own the Lakeshore West rail corridor between Aldershot to Niagara Region. Current priority track use belongs to freight rail operators who own the track. Metrolinx will continue to make incremental changes into the future based on ridership demands, with the understanding that major rail and station infrastructure can take several years to complete. Timelines for major construction of the new Grimsby GO Station will be confirmed once a Contractor is formally engaged for the project. Environmental studies to support the Transit and Rail Project Assessment Process (TRPAP) are underway and will be completed prior to Metrolinx commencing construction. You may see some early site investigations, preparation activities or CN work within their rail corridor; however, formal station construction has not yet been scheduled. More detailed timelines will be shared with the community as they become available. We value the time you have taken to provide comments and feedback. This information will be recorded and will help inform the future of the proposed Grimsby GO Station.	Y	01-Apr-26

Number	Date of Email	Comment	Reply Selected By Public (Y/N)	Response	Response Sent (Y/N)	Date of Response
105	20-Mar-26	To whom it may concern,As a regular commuter from St. Catharines to Toronto 4 days per week, I'm very excited to hear that the project to build a grimsby station is moving forward. As a near daily commuter and very much wanting to utilize go transit as much as possible, I wanted to reach out on two things that I believe will make Go Toronto-Niagara service a real, viable option for Niagara commuters.1. The line needs more direct service from Toronto-Niagara. I'm already spending a huge portion of my life commuting, and saving 20-30 mins one-way here and there is not a small thing. I occasionally ride from confederation but the stretch between the Burlington station and confederation takes 30 mins by train (and only 9 mins driving). St Catharines-Toronto takes 2 hours currently, when I can make the trip in 1HR30-40Mins leaving from the Burlington station. Making the trains more express from Niagara to Toronto (and reducing the commute by even just 15 mins) will have an enormous impact on my willingness to commute from a station further down the line.2. The lines needs more scheduled trips from Niagara-Toronto. St Catharine's-Toronto only has 1 train leaving from 7 am, meaning I only arrive to work at 930; and just one train leaving Toronto at 5pm to arrive at 7pm. Because of this schedule, I'm rarely able to take advantage of the St. Catharines station. It's the same situation for Confederation Go which has limited trains and I imagine this issue will persist for grimsby. Having even just 1 -2 more scheduled trips would make a big difference.	Yes	Thank you for participating in the online Public Information Centre for the Grimsby GO Station Transit and Rail Project Assessment Process (TRPAP). At this time, Train service levels are under review and more information will be shared with the community as they become available. GO train service is dependent on ridership patterns and data and Metrolinx does not own the Lakeshore West rail corridor between Aldershot to Niagara Region. Current priority track use belongs to freight rail operators who own the track. Metrolinx will continue to make incremental changes into the future based on ridership demands, with the understanding that major rail and station infrastructure can take several years to complete. We value the time you have taken to provide comments and feedback. This information will be recorded and will help inform the future of the proposed Grimsby GO Station.	Y	01-Apr-26
106	20-Mar-26	I support the Grimsby GO train. I live in Beamsville. This would provide a continuous way of traveling to Toronto.	No	No response required		

Grimsby GO Station Public Comments

Number	Date of Email	Comment	Reply Selected By Public (Y/N)	Response	Response Sent (Y/N)	Date of Response
107	20-Mar-26	Hi, I have a few questions that I couldn't decipher from the planning document. 1. I'm curious to know what you are planning to do with the Livingston Casablanca intersection? 2. What is happening on the property south of the train tracks, adjacent to Casablanca, where the old church used to be? Will that remain a green space or access to the GO station? Thanks	Yes	Thank you for participating in the online Public Information Centre for the Grimsby GO Station Transit and Rail Project Assessment Process (TRPAP) and for sharing your concerns. Niagara Region will be implementing intersection improvements and signalization at Casablanca Boulevard and Livingston Avenue. Full details can be found at <a href="https://www.niagararegion.ca/projects/casablanca-livingston-ea/default.aspx">https://www.niagararegion.ca/projects/casablanca-livingston-ea/default.aspx</a> The site of the old church is in private ownership and is not included in the station area.We value the time you have taken to provide comments and feedback. This information will be recorded and will help inform the future of the proposed Grimsby GO Station.	Y	01-Apr-26
108	20-Mar-26	When is the train station gonna be built and ready?	Yes	<p>Thank you for participating in the Public Information Centre for the Grimsby GO Station Transit and Rail Project Assessment Process (TRPAP). We appreciate your comments and the time you've taken to share your experience.</p> <p>Environmental studies to support the Transit and Rail Project Assessment Process (TRPAP) are underway and will be completed prior to Metrolinx commencing construction.</p> <p>You may see some early site investigations, preparation activities or CN work within their rail corridor; however, formal station construction has not yet been scheduled. More detailed timelines will be shared with the community as they become available.</p> <p>We value the time you have taken to provide comments and feedback. This information will be recorded and will help inform the future of the proposed Grimsby GO Station.</p>	Y	01-Apr-26
109	19-Mar-26	I think it's great! I have anxiety and find driving into Toronto very nerve wracking and would love to be able to just take the Go Train. The sooner the better!	No			
110	20-Mar-26	Can't wait to see this station completed, and up and running. I have family in Toronto and Peterborough who will use it when visiting. Traffic on the QEW, 401, Gardiner, DVP is crazy!	No			

Grimsby GO Station Public Comments

Number	Date of Email	Comment	Reply Selected By Public (Y/N)	Response	Response Sent (Y/N)	Date of Response
111	20-Mar-26	This is long overdue. It would be wonderful to get GO train service. It's needed for those of us that commute.	No	While impacts to light pollution will not be determined during the TRPAP phase of the project, as design progresses the Metrolinx station lighting design (including the proposed parking area) will be completed in a manner to minimize glare and light to adjacent lands.		
112	20-Mar-26	Station is must for Grimsby population to minimise their travel time to Toronto As well as to Niagara	Yes	<p>Thank you for participating in the Public Information Centre for the Grimsby GO Station Transit and Rail Project Assessment Process (TRPAP). We appreciate your comments and the time you've taken to share your experience.</p> <p>We value the time you have taken to provide comments and feedback. This information will be recorded and will help inform the future of the proposed Grimsby GO Station.</p>	Y	01-Apr-26
113	21-Mar-26	Can't wait for the Grimsby GO Station. What a great service for our town ! The traffic on the QEW gets worse by the day. Having access to the GO train may ease some of the traffic. Long overdue. Thanks.	No			
114	21-Mar-26	Recently moved to Grimsby and frequent downtown Toronto. Looking forward to the Go Train being completed. One of the reasons for buying a home here. The Niagara Region needs easy access to the GTA. I have no reasons to object its construction. The sooner it's completed the better. The Niagara Region has waited long enough. Let's start construction.	No			
115	21-Mar-26	Yes , please , train , now. Been waiting for 10 years. Omg.	Yes	<p>Thank you for participating in the Public Information Centre for the Grimsby GO Station Transit and Rail Project Assessment Process (TRPAP). We appreciate your comments and the time you've taken to share your experience.</p> <p>We value the time you have taken to provide comments and feedback. This information will be recorded and will help inform the future of the proposed Grimsby GO Station.</p>	Y	01-Apr-26

Grimsby GO Station Public Comments

Number	Date of Email	Comment	Reply Selected By Public (Y/N)	Response	Response Sent (Y/N)	Date of Response
116	21-Mar-26	My husband and I are retired but would use the service to go into Toronto for events as we sometimes do now from Burlington. We would enjoy being able to take the GO from Grimsby but would hope that it would be a direct trip from Hamilton or at the very least Aldershot and not stop in Burlington, Oakville, or Mississauga as it would take too much time. One of the reasons I retired early is because I was driving to Hamilton for work and the traffic was becoming unbearable on the QEW. With all the housing expansion in Grimsby, there seems to be a need for the service but it has to make sense for commuters to use it. Thank you	No			
117	21-Mar-26	I would like a bus along Livingston to the train	Yes	<p>Thank you for participating in the online Public Information Centre for the Grimsby GO Station Transit and Rail Project Assessment Process (TRPAP).</p> <p>Niagara Transit is responsible for providing local transit in collaboration with the Town and currently provides micro transit service in Grimsby that can be booked to provide transit from the station into Grimsby. There are also plans for future fixed route bus service from the station.</p> <p>We value the time you have taken to provide comments and feedback. This information will be recorded and will help inform the future of the proposed Grimsby GO Station.</p>	Y	01-Apr-26
118	21-Mar-26	I am happy with Grimsby going to have a GO Station. As I live in downtown Grimsby, the distance to the GO Station at Casablanca Blvd and QEW is 4.2 km, approximately an hour's walk. Will there be a GO Bus to get to the Grimsby GO Station from downtown Grimsby?	Yes	<p>Thank you for participating in the online Public Information Centre for the Grimsby GO Station Transit and Rail Project Assessment Process (TRPAP).</p> <p>Niagara Transit is responsible for providing local transit in collaboration with the Town and currently provides micro transit service in Grimsby that can be booked to provide transit from the station into Grimsby. There are also plans for future fixed route bus service from the station.</p> <p>We value the time you have taken to provide comments and feedback. This information will be recorded and will help inform the future of the proposed Grimsby GO Station.</p>	Y	01-Apr-26

Grimsby GO Station Public Comments

Number	Date of Email	Comment	Reply Selected By Public (Y/N)	Response	Response Sent (Y/N)	Date of Response
119	21-Mar-26	Please keep moving forward to get this GO station built. I support proposed improvements for accessing the station particularly for cyclists travelling from Grimsby's downtown and east side neighbourhoods. Local shuttle service ( taxi/ on-call mini bus) for Grimsby residents should also be considered as part of the supportive transportation plan.	No			
120	21-Mar-26	The proposed GO Station in Grimsby is an incredibly exciting and forward-thinking project that will bring lasting benefits to our community. As our town continues to grow, having reliable and efficient public transit is no longer a luxury—it's a necessity. A GO Station will provide residents with convenient access to larger urban centers, making commuting for work, school, and leisure far easier and less stressful. This project will also help reduce traffic congestion on our roads, lower emissions, and support a more sustainable future for Grimsby. Beyond transportation, the station has the potential to stimulate local economic growth by attracting new businesses, increasing property values, and encouraging thoughtful development in the area. Perhaps most importantly, it will strengthen our connection to the broader region while preserving the small-town charm that makes Grimsby special. Investing in this kind of infrastructure shows a commitment to our future, ensuring that our town remains vibrant, accessible, and thriving for generations to come.	Yes	Thank you for participating in the online Public Information Centre for the Grimsby GO Station Transit and Rail Project Assessment Process (TRPAP). We value the time you have taken to provide comments and feedback. This information will be recorded and will help inform the future of the proposed Grimsby GO Station.	Y	01-Apr-26
121	21-Mar-26	It's going to change this fine community but not for the better...see what happened to the small town of Brampton Ontario	No			
122	22-Mar-26	I commute for work and the unpredictability is frustrating. I would use the GO train service frequently. I would travel on it for weekends as well as during the week. It would also be great to have a water taxi service during the warmer months taking trips from Grimsby to other Niagara towns.	Yes	Thank you for participating in the online Public Information Centre for the Grimsby GO Station Transit and Rail Project Assessment Process (TRPAP).  We value the time you have taken to provide comments and feedback. This information will be recorded and will help inform the future of the proposed Grimsby GO Station.	Y	01-Apr-26

Grimsby GO Station Public Comments

Number	Date of Email	Comment	Reply Selected By Public (Y/N)	Response	Response Sent (Y/N)	Date of Response
123	22-Mar-26	Should be ready, when can we step on the Train ?? This review and that review. Can we appoint a Construction Manager who will lead this and Push it Along. Regards	Yes	Thank you for participating in the Public Information Centre for the Grimsby GO Station TRPAP and for your question. Timelines for major construction of the new Grimsby GO Station will be confirmed once a Contractor is formally engaged for the project. Environmental studies to support the Transit and Rail Project Assessment Process (TRPAP) are underway and will be completed prior to Metrolinx commencing construction. You may see some early site investigations, preparation activities or CN work within their rail corridor; however, formal station construction has not yet been scheduled. More detailed timelines will be shared with the community as they become available. We value the time you have taken to provide comments and feedback. This information will be recorded and will help inform the future of the proposed Grimsby GO Station.	Y	01-Apr-26
124	23-Mar-26	YES PLEASE. PLEASE BUILD THIS ASAP.	No			
125	23-Mar-26	We need more stops and go bus.to Beamsville lots of people to support itt	No			
126	24-Mar-26	Build it! What are you waiting for	No			
127	25-Mar-26	Hi, We should have Go train stop at Grimsby also at Beamsville. My kids have to go to Burlington for Go. Confederation Go train also not on regular basis.	Yes	Thank you for participating in the online Public Information Centre for the Grimsby GO Station Transit and Rail Project Assessment Process (TRPAP). We value the time you have taken to provide comments and feedback. This information will be recorded and will help inform the future of the proposed Grimsby GO Station.	Y	01-Apr-26
128	25-Mar-26	This is been going on for 11 years already. Get on with it already. We need a platform for the station to stop at and that's it. If this go station follows a timeline of other go stations it'll take 20 years to be opened. This is beyond ridiculous. In Europe, they build new tracks for transportation do all the approvals in a matter of three years.  The via train stops in town... Without issue... Get the platform and parking lot done and let's get on with it. This could be completed in one month.	Yes	Thank you for participating in the online Public Information Centre for the Grimsby GO Station Transit and Rail Project Assessment Process (TRPAP). We value the time you have taken to provide comments and feedback. This information will be recorded and will help inform the future of the proposed Grimsby GO Station.	Y	01-Apr-26

Number	Date of Email	Comment	Reply Selected By Public (Y/N)	Response	Response Sent (Y/N)	Date of Response
129	25-Mar-26	<p>Good afternoon, We are writing regarding the Transit and Rail Project Assessment Process (TRPAP) for the Grimsby GO Station. We have a strong interest in ensuring that this long-anticipated transit investment, along with the broader Protected Major Transit Station Area (PMTSA), is successful for Metrolinx, Niagara Region, and the Town of Grimsby. Below is a summary of our key questions, comments, and concerns. Transit-Oriented Communities and the PMTSA The selection of this site for a future GO Station was based on the opportunity to accommodate significant growth in both residential housing and employment within the Region. However, under the current concept plan, the Phase 1 lands (the southerly property) are physically separated from the PMTSA by the CN rail corridor. This creates a substantial barrier to pedestrian access. As proposed, residents and employees within the Grimsby GO Secondary Plan area would be required to walk a minimum of 1 km (measured from the easterly limits of the Secondary Plan) to reach the train platforms. Although the PMTSA boundary technically falls within the 500–800 m radius recommended for station proximity, the actual walking distance and access challenges undermine the intent of transit-oriented development. This disconnect may discourage development, reduce transit uptake, and limit the number of potential riders. For reference, we have attached an aerial image illustrating the physical separation created by a Phase 1 only station. Choosing to build Phase 1 on the south side first undermines development on the north side which is the planned Transit-Oriented Community, because a developer will not invest without a station in place. This creates a clear catch-22: the community depends on the station, and the station is waiting on the community. Phase 1 Impacts on the Adjacent Stable Residential Neighbourhood Based on the TRPAP materials and presentations to Grimsby Town Council, Phase 1 includes train platforms, parking facilities, a pick-up/drop-off area, and a GO bus loop. These “Day 1”</p>	Yes	<p>Thank you for participating in the Public Information Centre for the Grimsby GO Station Transit and Rail Project Assessment Process (TRPAP). We appreciate your comments and the time you’ve taken to share your experience. Constructing the Grimsby GO Station on the north side of the CN rail corridor is currently not feasible as this stage due to constraints posed by a Hydro One easement and the active CN rail service operating within their corridor. Based on an assessment of the station’s functional requirements, Metrolinx determined that a walk-on platform could be accommodated on the south side of the tracks and not on the north side. This is due to Metrolinx commuter train operations being limited to CN’s south track (within the two track corridor) and no operating rights for the north track. As design advances for the initial station infrastructure, elements to support a vehicle Pick Up/Drop Off, bus bays, and sidewalk connection to municipal infrastructure are all being included to enable access to those who do not drive. Niagara Transit also currently provides micro transit service in Grimsby, which can be booked to connect transit riders from the station into Grimsby. There are also plans for future fixed route buses from the station with connections to communities east and west of Grimsby. The goal is to ensure the station supports long-term ridership and provides safe, accessible, and convenient options for commuters across the region. As future phases of the project are advanced, which will be driven by ridership demands and station expansion needs, the design phase will consider additional station amenities within the south and north properties, as assessed within the footprint of the Grimsby GO Station TRPAP. We value the time you have taken to provide comments and feedback. This information will be recorded and will help inform the future of the proposed Grimsby GO Station.</p>	Y	01-Apr-26

Grimsby GO Station Public Comments

Number	Date of Email	Comment	Reply Selected By Public (Y/N)	Response	Response Sent (Y/N)	Date of Response
		<p>operations will generate additional vehicle and bus traffic along the Livingston Avenue Extension, directly affecting the nearby established neighbourhood. If both phases were developed concurrently, a significant portion of bus and vehicle traffic could be redirected to the north side of the rail corridor via the South Service Road. While some traffic through the existing neighbourhood would still occur, it would be meaningfully reduced, lessening impacts on local residents. We appreciate your consideration of these comments and would welcome the opportunity to further discuss potential solutions that support a fully connected, transit-oriented community and a successful GO Station for Grimsby. Kind Regards,</p>				
130	25-Mar-26	<p>Hello, please add me to the info list about Grimsby GO station.</p>	Yes	<p>Thank you for participating in the online Public Information Centre for the Grimsby GO Station Transit and Rail Project Assessment Process (TRPAP).</p> <p>Please subscribe in the URL below to stay up to date with the latest news, progress announcements and construction updates from Metrolinx:  <a href="http://www.metrolinx.com/en/subscribe-to-emails">www.metrolinx.com/en/subscribe-to-emails</a></p> <p>We value the time you have taken to provide comments and feedback. This information will be recorded and will help inform the future of the proposed Grimsby GO Station.</p>	Y	01-Apr-26

Number	Date of Email	Comment	Reply Selected By Public (Y/N)	Response	Response Sent (Y/N)	Date of Response
131	25-Mar-26	I'm sharing my feedback ... I was a regular GO user between Burlington and Toronto. While I no longer do this commute, I felt the Grimsby location would have been of great benefit to the community. Given where the proposed location is, my only real concern are the plans for pedestrian traffic. I would imagine that a cross over bridge would make the most sense, as I can see people running across the road (not at the cross walk) in what is already a very busy area. I also am wondering about the long term plans for parking, and estimated available spaces. Finally, given there is already a number of food options in the immediate vicinity, wondering if anything is planned to either connect these outlets or deal with the potential for increased traffic visiting these places before catching a train. I would be interested in being on an email list for updates.	Yes	Thank you for participating in the Public Information Centre for the Grimsby GO Station Transit and Rail Project Assessment Process (TRPAP). We appreciate your comments and the time you've taken to share your experience. As part of the design stage for the initial station infrastructure, elements to support bike access and sidewalk connections to municipal infrastructure will be reviewed and included to enable access to the station. A traffic impact assessment is underway to support the project. Results of this study will help further inform the design stages of this project to determine what improvements should be considered for traffic circulation in and around the GO Station. Niagara Region has also planned for this station in the design for the reconstruction of Casablanca Boulevard. Full build out has already identified the required lane configurations and traffic signal requirements based on anticipated traffic. Niagara Transit is responsible for providing local transit in collaboration with the Town and currently provides micro transit service in Grimsby that can be booked to provide transit from the station into Grimsby. There are also plans for future fixed route bus service from the station. Please subscribe in the URL below to stay up to date with the latest news, progress announcements and construction updates from Metrolinx: <a href="http://www.metrolinx.com/en/subscribe-to-emails">www.metrolinx.com/en/subscribe-to-emails</a> We value the time you have taken to provide comments and feedback. This information will be recorded and will help inform the future of the proposed Grimsby GO Station.	Y	01-Apr-26
132	25-Mar-26	Hello,  I would like to receive updates on Grimsby go station please.  Thank you	Yes	Thank you for participating in the online Public Information Centre for the Grimsby GO Station Transit and Rail Project Assessment Process (TRPAP).  Please subscribe in the URL below to stay up to date with the latest news, progress announcements and construction updates from Metrolinx: <a href="http://www.metrolinx.com/en/subscribe-to-emails">www.metrolinx.com/en/subscribe-to-emails</a>  We value the time you have taken to provide comments and feedback. This information will be recorded and will help inform the future of the proposed Grimsby GO Station.	Y	01-Apr-26

Grimsby GO Station Public Comments

Number	Date of Email	Comment	Reply Selected By Public (Y/N)	Response	Response Sent (Y/N)	Date of Response
133	25-Mar-26	Please incorporate a plan to raise the track over Casablanca in order for traffic to be able to drive under it to avoid significant congestion concerns. The access from the QEW is too limiting. Ensuring that traffic will not need to stop completely during on-boarding will address safety matters. This station should incorporate shared usage by VIA rail as well. A combined station that could accommodate both systems would enable efficient transportation for all. Thank you	Yes	Thank you for participating in the online Public Information Centre for the Grimsby GO Station Transit and Rail Project Assessment Process (TRPAP) and for sharing your concerns. We appreciate you taking the time to outline the issues affecting your property. While a grade separation is not proposed as part of the Station, Niagara Region is making improvements to Casablanca Boulevard from the North Service Road to Main Street, the reconstruction project includes providing better active transportation facilities along this corridor to facilitate active transportation from the north side of the QEW to the south side. At this time, Train service levels are under review and more information will be shared with the community as they become available. We value the time you have taken to provide comments and feedback. This information will be recorded and will help inform the future of the proposed Grimsby GO Station.	Y	01-Apr-26

Number	Date of Email	Comment	Reply Selected By Public (Y/N)	Response	Response Sent (Y/N)	Date of Response
134 - POST PIC	31-Mar-26	<p>With the development of the new station and expected increase in traffic, noise, and overall activity in the area, I wanted to inquire whether my property has been included in any impact assessments or mitigation planning. Specifically, I'm wondering:</p> <ul style="list-style-type: none"> <li>• Whether any noise or traffic studies were conducted for homes along Casablanca Blvd</li> <li>• If there are any plans for fencing, sound barriers, or other forms of property mitigation</li> <li>• Whether homeowners in my area may qualify for any upgrades or improvements due to the project</li> </ul> <p>My property is a corner lot and directly exposed to the main road, and I've noticed that some nearby homes have more substantial barriers (such as masonry walls), which raised the question. I would really appreciate any information or direction you can provide regarding this.</p>	Yes	<p>Thank you for participating in the Public Information Centre for the Grimsby GO Station Transit and Rail Project Assessment Process (TRPAP) and for sharing your questions. As part of the Grimsby GO Station project, noise and vibration impact assessments are being undertaken to help determine what mitigation measures tied to temporary construction activities and permanent operations may be required. A targeted traffic impact assessment is also underway to evaluate how the proposed station may influence traffic operations along Casablanca Boulevard and the surrounding road network. This includes traffic counts and site observations to capture current conditions and better understand day to day patterns. Niagara Region has also planned for this GO Station in the design for the reconstruction of Casablanca Boulevard. The full build out for Casablanca Boulevard has identified required lane configurations and traffic signal requirements based on anticipated future traffic. As design advances and a contractor is onboarded, pre-condition survey's will be undertaken as warranted for structures (i.e. homes/buildings) adjacent the project area to better understand the current structural conditions and monitor to further inform any impacts during and post-construction that need to be addressed. Where impacts are identified through the environmental assessments, appropriate mitigation measures, such as fencing or barriers, will be considered during detailed design. We value the time you have taken to provide comments and feedback. This information will be recorded and will help inform the future of the proposed Grimsby GO Station.</p>	Y	01-Apr-26