



Stantec

**Raw Water for Irrigation Phase 2
Technical Memorandum
Public Information Centre No. 2**

Prepared by:
Stantec Consulting Ltd.

November 12, 2007

Table of Contents

1.0 INTRODUCTION	1.1
2.0 DESCRIPTION OF PUBLIC INFORMATION CENTRES	2.1
3.0 CONCLUSIONS	3.1

List of Appendices

Appendix A	Notice of Public Information Centres
Appendix B	PIC Boards
Appendix C	Photographs
Appendix D	Attendance Registration Sheets
Appendix E	Written Comments

1.0 Introduction

Consultation is an integral component of the Raw Water for Irrigation Study – Phase 2. The study proposed two points of public contact.

The first Public Information Centre (PIC) was held at the beginning of the project in August 2006 with a purpose to engage and inform the public regarding the scope of this project. Two identical PICs were held, one in Niagara-on-the-Lake (NOTL), and the other in Lincoln in order to achieve greater public participation.

The project is now nearing completion, key studies have been carried out and reports have been submitted to the Region of Niagara. In order to present the findings of the studies as part of this project, a second PIC was organized in September 2007. Similar to the first PIC, two identical sessions were held in NOTL and Lincoln on successive dates.

Notices of the PICs (see Appendix A) were published in two Regional newspapers two weeks prior to the PICs. Notification was also sent to the organizations and individuals on the project Contact List. The notices may have been further distributed by the recipient organizations to their memberships.

2.0 Description of Public Information Centres

The second project PICs were held at the following locations, dates and times:

- Meridian Credit Union Arena, Virgil, Tuesday, September 23, 2007, 4:00 PM to 8:00 PM
- Lincoln Municipal Office, Wednesday, September 24, 2007, 4:00 PM to 8:00 PM

Boards were prepared for each of the disciplines involved with the project. Specifically, the information presented related to the following disciplines:

- Engineering Study (for areas below the Escarpment)
- Hydrogeological Study (for areas above the Escarpment)
- Economic Benefits Study
- Natural and Social Environment Study

The PIC boards are included in Appendix B.

Several members of the project team were available at the PIC to discuss various aspects of the project with any interested individual. These included:

- Project Manager (Region of Niagara)
- Project Director (Stantec Consulting Ltd.)
- Project Manager (Stantec Consulting Ltd.)
- Project Engineer (Stantec Consulting Ltd.)
- Task Lead, Economic Benefits Study
- Task Lead, Hydrogeological Study (Stantec Consulting Ltd.)
- Task Lead, Natural and Social Environment Study (Stantec Consulting Ltd.)

Twelve people signed the attendance registration at the NOTL PIC and 35 people signed the attendance registration at the Lincoln PIC. A few attendees did not sign the registration. We estimate that the number of the public attendees at the two PICs was between 50 and 60 people. The attendance registration forms are included in Appendix D.

The comments expressed at the PICs were generally in support of the project. Some attendees enquired about the potential cost to the growers.

Photographs from both the PICs are shown in Appendix C.

A total of 13 written comments were made by completing the comment forms provided at the meeting. The comments made were either dropped in the comment box during the PICs, mailed, emailed, or faxed to the Consultant afterwards. These comments are included in Appendix E. A brief summary of these comments are provided below:

- “Great Idea. The sooner the better. Please move forward with these plans.”
- “Concept is great. We need this sooner than later.”
- “The idea is fantastic. When can we get this implemented? The sooner the better.”
- “Looks great! I love the W1 option. We really need this in “Greenbelt.””
- “This is a great start. All agriculture should have a supply of water to irrigate from. Look at the agriculture impact study and use those figures to supply water to the livestock and crop (cash crop) farmers. They also pay taxes and need water to maximize their yields. We have to compete with other farmers on Ontario that irrigate as well as other countries (i.e., New Mexico, U.S.A.). We are very short of water above the Escarpment.”
- “I would favour the idea if I was assured that I would get water for our farm needs when needed and the costs affordable. Government should be encouraged to finance such projects.”
- “If this proposal proceeds, there will be a large network of pipes throughout west St. Catharines, Lincoln, Beamsville etc. While all the digging has been done, all the crossings made, would it be worth a consideration to add another pipe in to the excavation and supply drinking water to this area as well.”
- “Good project, we need water. The economic benefit of greenhouses is likely understated. I believe you are concentrating on the correct areas of high agricultural benefit.”
- “We absolutely need this project as soon as possible. Let’s move it forward. Start with the West (Lincoln, and St. Catharines)”
- “We feel there is a great urgency to have good quality raw water available for our crops. I feel the potential benefit to the greenhouse sector is greater than suggested.”
- “We are very hopeful that a raw water irrigation system will be established in our area. Unless water for irrigation is made available, this farm will not be financially viable. Water will be a lifesaver for our farm.”

- “I believe irrigation is extremely important in maintaining the greenbelt status of this area and without some assistance, maintaining same continued agricultural activities will be impossible. Thus, I will support any effort to provide water for irrigation”
- “Potential of 4 Mile Creek aquifer not presented (St. Davids). Quality of water contaminated by Cyanamid at headwaters 4 Mile. Consultant would not answer? Only wanted information from farmer. Display boards of little interest for NOTL farmer. No use having meeting Beamsville farmers their SOL.”

We feel that most of the comments are general in nature and support the irrigation infrastructure project. Due to the general nature of the comments, a response to most is not required. We however, provide our response to the last comment below:

- St. Davids is in the East District and is well outside the area considered for the groundwater study. We feel the comment was regarding the presence of Cyanide. (“Cyanamid”) at the headwaters of 4 Mile creek. Since this project is related to planning an infrastructure for a very large area, detailed chemical analysis of creek waters is beyond the scope of this study. However, the 4 Mile Creek is currently recharged through OPG waters and was previously recharged using groundwater wells, which are not currently used.

In general, we feel that there was adequate participation in Lincoln. However, similar participation in NOTL would have been preferred. Most of the comments received demonstrate the growers need and desire for a reliable supply of raw water for irrigation owing to a dry season this year. We felt that there was a lot of support for this initiative especially in the West District (Lincoln and St. Catharines), owing to the fact that the growers in this area do not have a formalized irrigation system.

3.0 Conclusion

The purpose of the second PIC was to inform all interested stakeholders of the project findings and provide them with an opportunity to comment on the findings of the project. We believe that this PIC successfully met its objectives as significant grower interest was witnessed at the PIC, although, there was greater interest in the West District than in the NOTL area.

With this PIC No.2, our process of public consultation has concluded. At the project completion, all reports and Technical Memos prepared as part of this project, including the PIC memos, will be compiled in to a Project Report, which will be tabled the Region of Niagara for a 30-day review period. Subsequently, a Notice of Project Completion will be issued. The Project Report will then be made available on the Region's website for public access.

-- STANTEC CONSULTING LTD. --

**RAW WATER FOR IRRIGATION PHASE 2
TECHNICAL MEMORANDUM
PUBLIC INFORMATION CENTRE NO. 2**

Appendix A

Notice of Public Information Centres

1611 10574/10

- 262 public notices
- 262 public notices
- 262 public notices
- 262 public notices

- 300 market basket
- 310 articles for sale

- 310 articles for sale
- 310 articles for sale
- 310 articles for sale

NOTICE OF PUBLIC INFORMATION CENTRE

THE REGIONAL MUNICIPALITY OF NIAGARA MASTER PLAN FOR AGRICULTURAL IRRIGATION IN THE NORTHERN PORTION OF NIAGARA REGION

The Study: The Regional Municipality of Niagara, through their consultant, Stantec Consulting Limited, is carrying out a study to identify options for providing raw water to fruit, grape and greenhouse growers in Niagara-on-the-Lake, St. Catharines, Lincoln, Grimsby and Pelham. The goal of the study is to determine an irrigation scheme or schemes that are able to meet the needs of the agricultural community in this area, while being financially feasible and environmentally sound.

The Process: The study is being conducted in accordance with the Municipal Engineers Association's Class Environmental Assessment process. This is an approved process under the Environmental Assessment Act.

Initial Phase: Phase 1 of this study was implemented from December 2004 to August 2005, during which two Public Information Centres were held. This initial phase subdivided the target agricultural lands into four irrigation districts, identified a number of servicing alternatives for each irrigation district and recommended a comprehensive further study (Phase 2) to finalize the selection of the optimum alternative for each district. The Final Report of Phase 1 is available at the following web site: <http://www.regional.niagara.on.ca/living/ap/irrigation.aspx>.

Current Phase: The second phase of this study was initiated in July 2006 and is expected to be completed by December 2007. During the initial months of the current phase, several field studies were completed. This phase has identified feasible alternatives for each irrigation district. As part of the study an Economic Benefits Report has also been prepared to estimate the potential direct and indirect benefits as a result of providing irrigation. In addition, an Environmental Impacts Report detailing the impacts to the environment for each of the alternative below the escarpment has been prepared.

The current phase of this study is funded in part through contributions by the Government of Canada and the Province of Ontario under the Canada-Ontario Water Supply Expansion Program (COWSEP), an initiative of the federal-provincial-territorial Agricultural Policy Framework designed to position Canada's agri-food sector as a world leader. The Agricultural Adaptation Council administers COWSEP.

Public Consultation and Input: Public consultation is a key component of this study. The Project Team is working with a Technical Advisory Committee (TAC) made up of representatives from a variety of stakeholders including the Region's Public Works and Planning Departments, affected local municipalities, agricultural organizations, the Federal Department of Agriculture and Agri-Food Canada, Ontario Ministry of Agriculture, Food and Rural Affairs, Ministry of Natural Resources, Ministry of Environment, Niagara Peninsula Conservation Authority, Ontario Power Generation, and the St. Lawrence Seaway Authority.

Two Public Information Centres (PIC) are planned as detailed below to present the findings of the study and the recommended servicing alternatives along with the associated opinions of probable cost, potential benefits, and the potential environmental impacts. Both PICs will be the same and will follow an informal, "drop-in" format by which large display boards will be used to present project findings. Representatives from the Region, Stantec and the TAC will be present at the PICs to answer questions and discuss comments on the study.

Tuesday, October 23, 2007 • 4 PM to 8 PM

Meridian Credit Union Arena, Mary Snider Room

1565 Four Mile Creek Road (Behind the Municipal Building in Virgil)

Wednesday, October 24, 2007 • 4 PM to 8 PM

Town of Lincoln Municipal Building, 4800 South Service Road, Beamsville

Comments

You are encouraged to provide comments throughout the study. We are interested in hearing any comments or concerns that you may have. To facilitate the exchange of information pertaining to this project, a website has been set up at <http://www.regional.niagara.on.ca/living/ap/irrigation.aspx> where project information will be posted and input can be received. All comments received will be considered in identifying the preferred scheme. With the exception of personal information, all comments will become part of the Public Record.

Subsequent to the completion of this PIC, a Project Report will be written to document the process and the conclusions reached. The Report will be made available for public review for a period of 30 calendar days. The public will be notified of the date, time and location of the filing of the Report at the appropriate time through newspaper notices and a further letter mailed to those in the project's database.

If you have any questions or comments related to this study, please contact either of the following:

Mr. Drew Sempie, Regional Municipality of Niagara Planning and Development
 3550 Schmon Parkway, P.O. Box 1042, Thorold, Ontario L2V 2T7
 Tel: 1-800-263-7215 • Fax: 905-641-5208
 email: drew.sempie@regional.niagara.on.ca

Mr. Rajan Sawhney, P.Eng. Stantec Consulting Ltd.
 49 Frederick Street, Kitchener, Ontario N2H 6M7
 Tel: 519-585-7123 • Fax: 519-579-8806 • email: rajan.sawhney@stantec.com
 This Notice issued 10th October 2007.



- 278 daycare available
- 275 babysitting
- 286 seniors services
- 300 market basket

KATE'S Kinder Kare, nutritious meals & snacks. Caring environment, receipts. Reasonable rates. 905-563-1796.

THE Grimsby Curling Club is looking for a qualified babysitter for Monday and Thursday afternoons (1-3). Supervising young children while Mom plays on the ice. DJ Brooks 905-945-2688.

I will come to your home to help with personal care, light housekeeping or errands. I have many years experience and enjoy being with seniors. Cathy 905-399-1974.

HUNTERS we will cut and wrap all your wild game. Sausage and pepperoni processing. 905-931-8977

Call for details!
 Main Office: 905.600.0585
 Grimsby Office: 905.945.8392

WASHER & dryer, "Kitchenaid", \$300.00. Excellent condition, call 905-934-2852.

PICK Your Own Apples. Simrall Farm is located at 144 Russe Road, one block east of Grimsby Mountain Road between Ridge and Elm Trees. Apple Cider available. Open Thursday to Sunday, 10-6. Call for variety and availability 905-945-7963.

BEDROOM set, gorgeous 8 piece, cherry, triple dresser with mirror, tall dresser, 2 night stands. New, still in box! Originally \$5,750, sell \$1,500. 905-923-1434

CARPETS- I have several 1,000 yds. of new Stainmaster & 100% nylon carpet. Will do living-room & hall for \$389. Includes carpet, pad & installation (30 yards) Steve, 905-682-5320. www.suburbancarpets.com

DRIVING table, beveled glass top, 39"x59", 6 stylish matching chairs, 6 months old \$590. 905-937-4311

HARDWOOD - Ash, Red Oak, \$1.25 per board foot & up. Air dried 5 years. No Sundays, 905-957-1641.

HOME-GYM, universal, perfect condition, 3 years ago, asking \$650. Call 905-682-3153.

HOT Tub (Spa) Covers, Best Price, Best Quality. All Shapes and Colours. Call 1-866-585-0056. www.theccorverguy.ca

LANDSCAPING rocks, various sizes, greenhouse glass panels, Universal gym and exercise equipment, leak seal unit and grey sectional sofa with pull-out bed. 905-928-8134.

LIGHTLY used air hockey table, \$35; white solid vinyl screen door, new, 80"x36"x1", \$150 including hardware. 10" Spedeman bicycle, \$45. 905-871-4738

LOOKING for privacy? We carry cedar hedging trees. Starting as low as \$2.99. Special this Fall! 5'-6", \$6.90 in lots of 50 or more delivered. 289-241-4242.

MAAGC Chef gas stove, self-clean sealed burner, stainless steel, 4200. Hammond organ with bench. Console model 3M. \$300. 905-563-5309

MOVING sale, sectional sofa, tables, two chairs, cabinet, entertainment unit, table & chairs, records. 905-935-7036

NIAGARA This Week can offer competitive prices in designing and printing your flyers and distribute them through the #1 system used in the Niagara Region. Reach 1,000 to 172,000 homes. Let us target to the audience that you want to attract through flyers and our new flyer wrap. Call Sam Mumford 905-688-2444 ext.324 or email sam@mumfordniagara.com

POOL table, 8', brand new, never used, 1" slate, 5000, accessory kit included. Brand new in boxes. Cost \$4,900. Sell \$1,950. 905-304-9994

SELL your used household items priced under \$100 in our Friday edition of Niagara this Week. Free ads are subject to space availability and may be pulled without notice and rescheduled for a future edition. Free ads are not accepted by phone. 1 item per ad (must include price), 1 ad per week per household.

SOLID oak round table, clawed legs, 47" with additional 24" insert; matching carved 4 chairs, china cabinet, mirrored lighted oak finish. Excellent condition. \$650 total. Please leave message 905-309-8859

TRES, 4 Eagle aluminum wheels with new SUMITOMO P205/55R16 tires, fit Canada or Sunfire, \$600 at. 905-309-2282

301 flowers & delivery

Devine Design Flowers
 By Kim & Chris
 Flowers for All Occasions
 905.945.2710
 905.309.5437

302 farm service

QUALITY, registered Alpaca for sale, retail Alpaca items. Lessons, spinning, knitting, sewing. 905-562-4252. www.canadiancomfortalpaca.com

306 furniture

ALL new queen bed. Orthopedic pillowtop mattress set. New, still in plastic. Cost \$1,045, sacrifice \$375. Call 905-304-5573

BED, king, new pillowtop orthopedic mattress set and frame. New in plastic. Cost \$1,600. Sell \$675. 905-971-3515

310 articles for sale

27" Sony stereo TV, with digital cable receiver. Excellent condition. \$400. 905-682-3450

ALL Steel Buildings Factory Direct. 25x40 \$9,500, 30x40 \$12,500, 32x50 \$16,500, 40x90 \$22,000. Many other sizes available. Complete building packages. New do-it-yourself floating foundation. Call Pioneer 1-800-504-7749 www.pioneerbuildings.com, Since 1980.

Expecting A BABY?

Purchase our Premium Birth Announcement Package in the Grimsby Lincoln News & receive a coupon for a FREE ANNOUNCEMENT for your Baby's 1st Birthday!

Call for details!
 Main Office: 905.600.0585
 Grimsby Office: 905.945.8392

301 articles for sale

Apples, Cider, Pears & Squash
 W.M. SMEREK
 6654 MUD ST., SMITHVILLE
 905-945-2563
 CLOSED SUNDAYS

310 articles for sale

McNALLY HOSPICE CHARITY AUCTION
 October 13th, 2007 Preview at 8:30 a.m.
 Sale Starts at 9:30 a.m.
 At the Seniors Centre, 18 Livingston Ave., Grimsby, ON

AS PART OF THEIR 175TH ANNIVERSARY CELEBRATIONS, ST JOHN'S PRESBYTERIAN CHURCH, GRIMSBY IS PLEASED TO BE HOSTING A CHARITY AUCTION WITH ALL PROCEEDS TO BE GIVEN TO THE MCNALLY HOSPICE PROJECT. SPECIAL THANKS TO THE GRIMSBY CHAMBER OF COMMERCE FOR THEIR SUPPORT OF THIS PROJECT.

DIRECTIONS: EXIT OEW AT CASABLANCA - PROCEED SOUTH TO LIVINGSTON AVENUE (AWAY FROM LAKE), TURN LEFT ONTO LIVINGSTON AND PROCEED TO 18 LIVINGSTON AVENUE. WATCH FOR SIGNS. ART: Framed Oil Painting by Eleanor Lampman, Limited Edition Prints by Vic Gibbons (Pair of Blue Jays in Birch Trees, Pair of Cardinals in Birch Trees), Original Oil Painting by Kent Hipkin, Small Signed Oil Painting on canvas, Framed Ducks Print, Numbered & Signed, Signed Brian Romagnolo Limited Edition Print "Melancholy Friends" 27 of 450, Framed "Isis, Ramesses, Offering to Horus" (Papyrus Rat. 5005.5038 Certificate of Authenticity), Large Framed Print - Winter Scene, Large Framed Painting by Burnell, Framed Ink Drawing by Scott Wilbur 1978, Two Chinese Seal paintings in heavy mahogany cases with glass coverings still in their original boxes. ART DECORATIVE: Tall Wooden Decorative Cats, Large Colored Glass Vase, Porcelain Doves on wooden stand, Wood Turned Fruit Bowl, Hand Crafted Chess Set c/w folding Chess Board Case, Chinese Collector Plate & Covered Urn. BOOKS: Ottawa postcards by Malak, The Origins of Gothic Revival - Michael McCarthy, Ghosts Ships - Emily Cain, Power The Pratt Whitney Canada Story - Kenneth Sullivan and Larry Milbray, One Hundred Outcasts - Ben Hansen, Florida A Photographic Journey - Bill Harris, Family Creative Workshop Vol 8, Treasure of Canadian Glass Reference Book by Doris & Peter Unitt, Fine Porcelain & Pottery Reference Book by Stanley W. Fisher. CLOCKS: Hand Crafted Mantel Clock. COLLECTIBLES: Kierstead Collector Plate - The Sawmill, Kings Landing NB, Antique Vase by S Ford & Co (England), Amber Milk Bottle "Blue Boy Sparkle", Leather Jacket "Detroit Super Bowl 2006" Size XL, Super Bowl Sports Bag Containing blanket, wool toque & scarf, small football and a deck of cards, Collection of Milk Bottles, Ships Compass. FURNITURE: Child's Rocking Chair, Rocking Chair, Oak & Bed Headboard & Footboard with Wood Rails, Antique Pine Sideboard 2x2 Drawers, Barn Board Wash Stand - Reproduction of 18th Century Wash Stand, Small Drop Leaf Gate Leg Tables, Large Wall Mirror with Decorative Gold Corners, Large Entrance Mirror, Child's Cradle, Coffee Table, Pair of Stereo Speakers, Upholstered Swivel Chair, Planter Bench, Bistro style black Patio Set, Two End Tables & Matching Coffee Table, Antique two drawer Dresser with mirror. GLASS & CHINA: Cornflower Glass - Yellow - 6" Dia. Plates (Circa 1920), Cornflower Glass - Green 6" Plate (Circa 1930), 6" Hexagon Plates (Tiffin Glass), Cornflower Glass - Pink - 6" Vase (Tiffin Glass), 11" Oval "Centre Handled" Cake Plate (Tiffin Glass, 1925 -35), 8" Plate (Tiffin Glass), Cornflower Glass - Clear - 7" Rectangular Divided Reish Dish (Parden City Glass Circa 1930s), 10" Divided Reish Dish (5 Part), 11" Cake Plate by Imperial Glass, 11" Princess Cake Plate, 6" Long Bent Handle Tidbits Tray, Handle Lemon Tray, 7 1/2" Ash Tray (Viking), 10" Fruit Bowl (Blank made with New Martinsville # 4462), Handled Cake Plates, Carnival Glass - 7-8" Ruffled Rim Fruit Bowl (original), 9" Ruffled Rim Fruit Bowl (Original 1900's), Collector Plates - 11" Schumann Germany, 8" 1816 F Junk Barvaria, 10" M8hto, 10" Noritake hand painted, 27 Florence Osborne (England), 8" Thunder Bay Crest, Stratford City Hall, Canada Centennial, Japanese Collector Plates - 9" Oriental Imperial Jingdezhen Porcelain, Yellow 8 1/2" 3 Toed Cut Glass Flowered Bowl, Ornate Covered Sugar Bowl (W.H.Grindley England), 16 Cups and Saucers including Royal Albert, Paragon, Chinz, Hammersey, etc., Hammersey Tea Set - Cup & Saucer and Luncheon Plate, 2 Blue dish Jam pots in Chrome Holder, 2" X 16" Fumival Oriental Platter, Large Wash Bowl & Pitcher signed by V.V. Carreres, 4 Demitasse Cups & Saucers, Covered Casserole Dish, White Serving Bowl, China Tea Service - Includes Teapot, Cream & Sugar and 6 Cups and Saucers. MISCELLANEOUS: Bottle of Brandy Ice Wine, Craftsman Router Table with Router & Bits, SPA Package (Soaps, Body Oils etc.), Pair of Table Lamps, Chandelier, Swag Lamp, Hand Made Quilt, Gift Basket with two bottles of wine, Gift Baskets, Large Canister Set, Tool Bag, Men's Bicycle, Telescope with tripod, Stair Stepper Exerciser, Set of new Golf Clubs, Golf Bag.

SERVICES: 10 Home Made Pies (1 per month), One Reiki Treatment, One Week Pet Sitting (at Owners Premises), 10 Cakes, 1 per month, 1 massage. **TERMS OF SALE:** 10% Buyers Premium, Sale subject to additions and deletions. Auctioneer reserves the right to withdraw any item from the auction sale at any time. All items sold in "as is" condition, Auctioneer not responsible for any accidents, loss or injuries on property day of Auction, Payment by Cash or Cheque, there are no money reserves on some items. Lunch Courier

Donations are still being received so please check www.ontarioauctionguide.com for the latest additions.

310 articles for sale

310 articles for sale

310 articles for sale

310 articles for sale

325 auctions

325 auctions

325 auctions

325 auctions

325 auctions

325 auctions

325 auctions

325 auctions

325 auctions

325 auctions

325 auctions

325 auctions

325 auctions

325 auctions

325 auctions

325 auctions

325 auctions

325 auctions

325 auctions

325 auctions

325 auctions

325 auctions

325 auctions

325 auctions

325 auctions

325 auctions

325 auctions

325 auctions

325 auctions

325 auctions

325 auctions

325 auctions

325 auctions

325 auctions

310 articles for sale

CARPET
 I have several thousand yards of new Stainmaster and 100% carpet. I will carpet your living room & hall for \$389. Price includes carpet, pad & installation (30 yds.) Call Steve 905-771-1170

325 auctions

BILL'S AUCTION
 Quality New & Used Furniture, New Mattresses, Bedroom Suites. Open Mon.-Fri. 10-5. Sat. 10-4. Auctions every Friday at 7 pm. 4073 Canborough Rd. Wellandport, Ontario 905-386-6708. We'll buy 1 piece or your whole estate for cash! Call us BEFORE you say SALE!

325 auctions

325 auctions

325 auctions

325 auctions

325 auctions

325 auctions

325 auctions

325 auctions

325 auctions

325 auctions

325 auctions

325 auctions

325 auctions

325 auctions

325 auctions

325 auctions

325 auctions

325 auctions

325 auctions

325 auctions

325 auctions

325 auctions

325 auctions

325 auctions

325 auctions

325 auctions

325 auctions

325 auctions

325 auctions

325 auctions

325 auctions

325 auctions

325 auctions

325 auctions

Eller Auction Services, Grimsby, Ontario
 905-643-3131 or larryeller@sympatico.ca

Appendix B

PIC Boards

Welcome to the
NIAGARA IRRIGATION MASTER PLAN
PUBLIC INFORMATION CENTRE
No. 2

PLEASE SIGN IN



October 23 and 24, 2007

Project Objectives

- Ascertain servicing feasibility
- Prepare servicing alternatives along with opinions of probable costs
- Identify potential project benefits
- Identify and evaluate environmental impacts
- Recommend a preferred alternative

Engineering Study - Overview

- To evaluate servicing options primarily below the Escarpment
- Pelham and Grimsby excluded from servicing
- Options include pipeline and open channel distribution
- Service areas grouped as
 - West District Zone A (Lincoln and St. Catharines)
 - East District (Niagara-on-the-Lake)
- Four servicing alternatives for West District Zone A
- Three servicing alternatives for East District
- Opinions of Probable Cost developed for each alternative

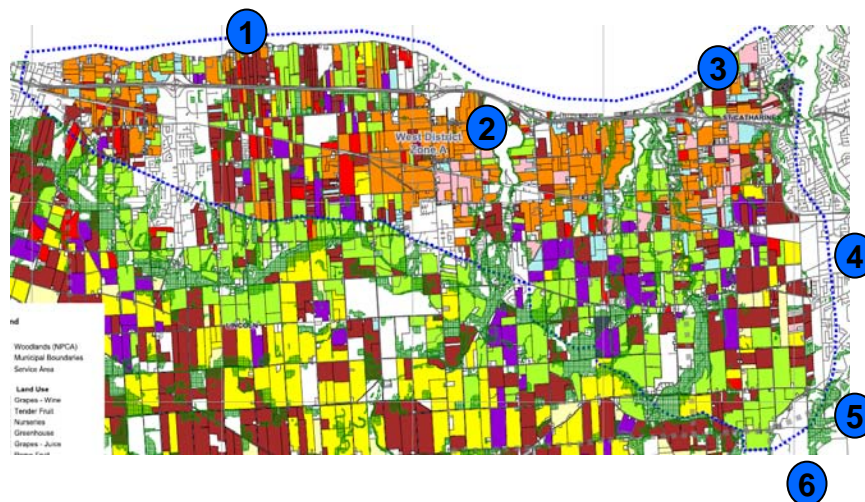
WEST DISTRICT – POTENTIAL INTAKE LOCATIONS

1. Lake Ontario at Sann Rd
2. Jordan Harbour at 1st Ave
3. Lake Ontario at 5th St. Louth
4. 12 Mile Creek at CN Crossing
5. 12 Mile Creek at OPG Discharge
6. Lake Gibson/Moodie Near Decew Rd

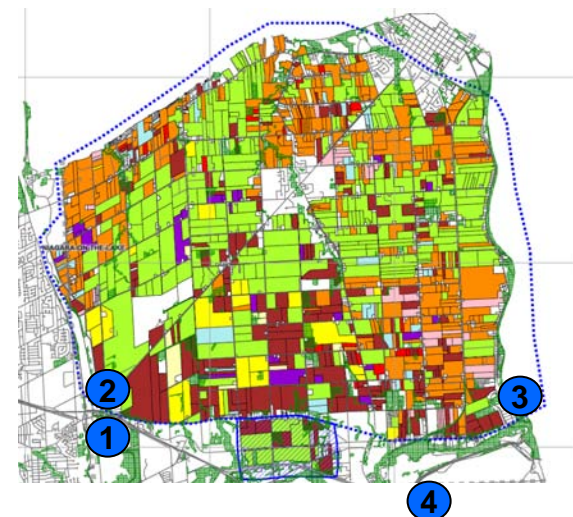
EAST DISTRICT – POTENTIAL INTAKE LOCATIONS

1. Lock 3 Pumping Station (new)
2. Eastchester Pumping Station
3. Queenston Pumping Station
4. Ontario Hydro Canal Pumping Station

WEST DISTRICT ZONE A



EAST DISTRICT



West District Zone A

Servicing Alternatives:

- Four alternatives considered, named W1, W2, W3, W4
- W1 to W3 comprise of pipeline distribution
- W4 comprises part servicing by open channel. Area east of the Sixteen Mile Creek to be serviced by open channel
- Different combinations of intakes for different alternatives
- One or two booster pumping stations required depending on the alternative
- Hydraulic modeling software WaterCAD® utilized to estimate pipe sizes, and booster station capacities
- Open channel sizes estimated by manual calculations based on first principles
- Opinions of probable capital and annual O&M costs developed for each alternative

Summary of Alternatives:

Item	Alternative			
	W1	W2	W3	W4
Capital Cost in Million Dollars	75	82	86	71
Annual O & M Cost in Million Dollars	0.3	0.3	0.3	0.4
Total Pipe/Channel Length (km)	140	145	152	148
No. of New Intakes	1	2	2	2
Intake Option Number(s)	1/2/3	1/2 + 3/4	1/2 + 5/6	1/2 + 5/6
No. of Booster Pumping Stations	2	2	1	1
No. of Major Crossings	2	2	2	2
No. of Minor Crossings	24	24	24	16

East District

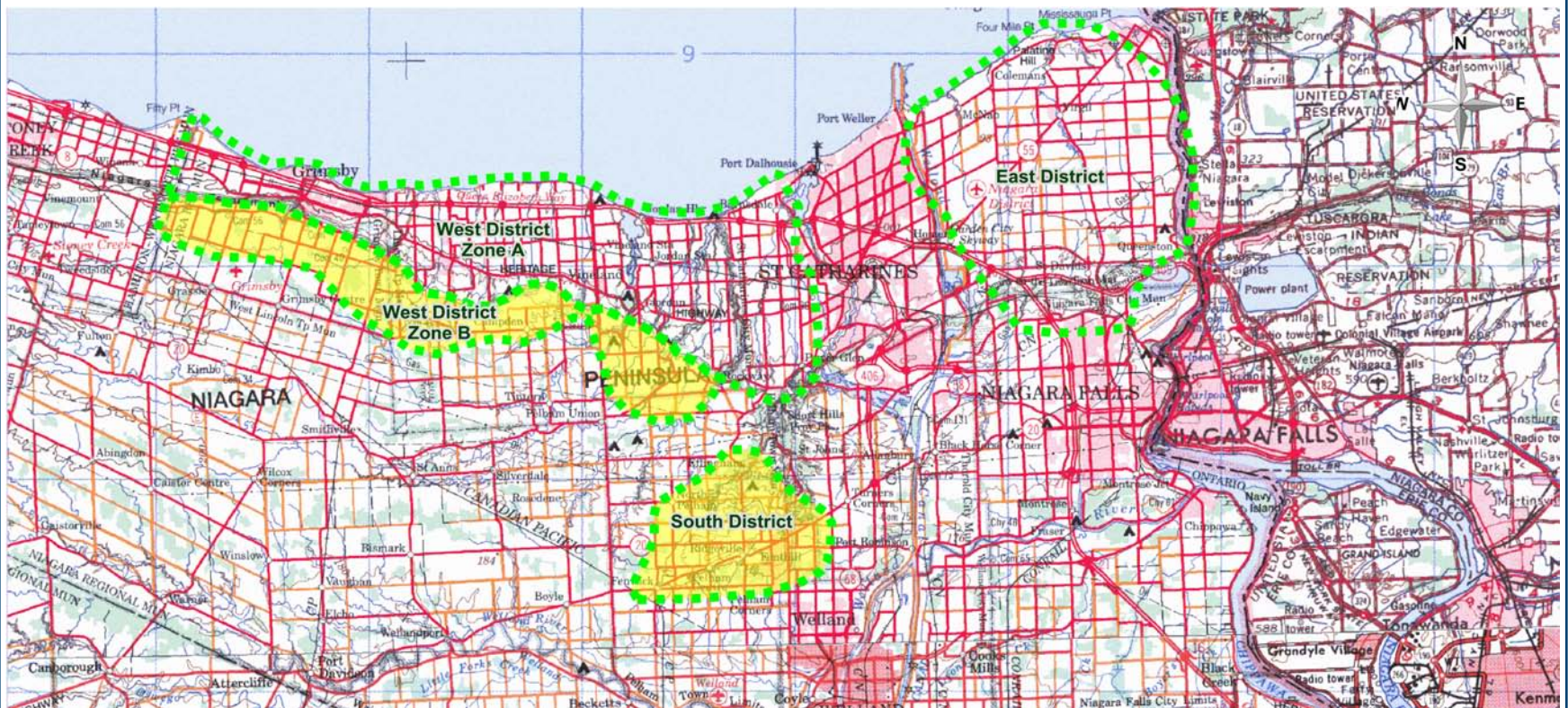
Servicing Alternatives:

- Three alternatives considered, named E1, E2, E3
- E1 and E2 comprise of pipeline distribution
- E3 comprises of open channel distribution
- One booster pumping station required for each of the alternatives E1 and E2
- Hydraulic modeling software WaterCAD® utilized to estimate pipe sizes, and booster station capacities
- Open channel option utilizes existing infrastructure with upgrades to expand service area (includes K-Smart proposed upgrades) and pumping station sizes to meet demand requirements
- Opinions of probable capital and annual O&M costs developed for each alternative

Summary of Alternatives:

Item	Alternative		
	E1	E2	E3
Capital Cost in Million Dollars	62	66	19
Annual O & M Cost in Million Dollars	0.29	0.29	0.27
Total Pipe/Channel Length (km)	167	167	24
No. of New Intakes	-	1	1
No. of Intake Upgrades	2	1	2
No. of Booster Pumping Stations	1	1	0
No. of Major Crossings	2	2	1
No. of Minor Crossings	0	0	0

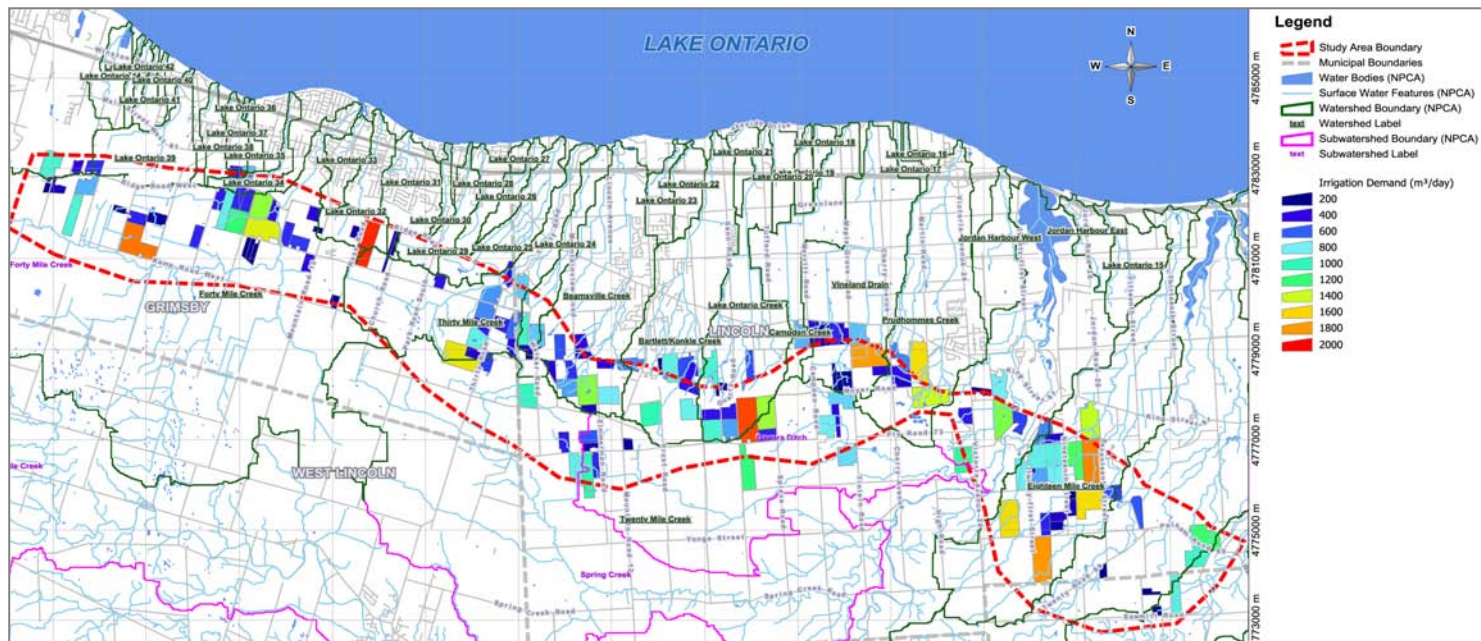
Hydrogeological Study Areas



Is there potential for groundwater-based irrigation?

- West District Zone B
- South District

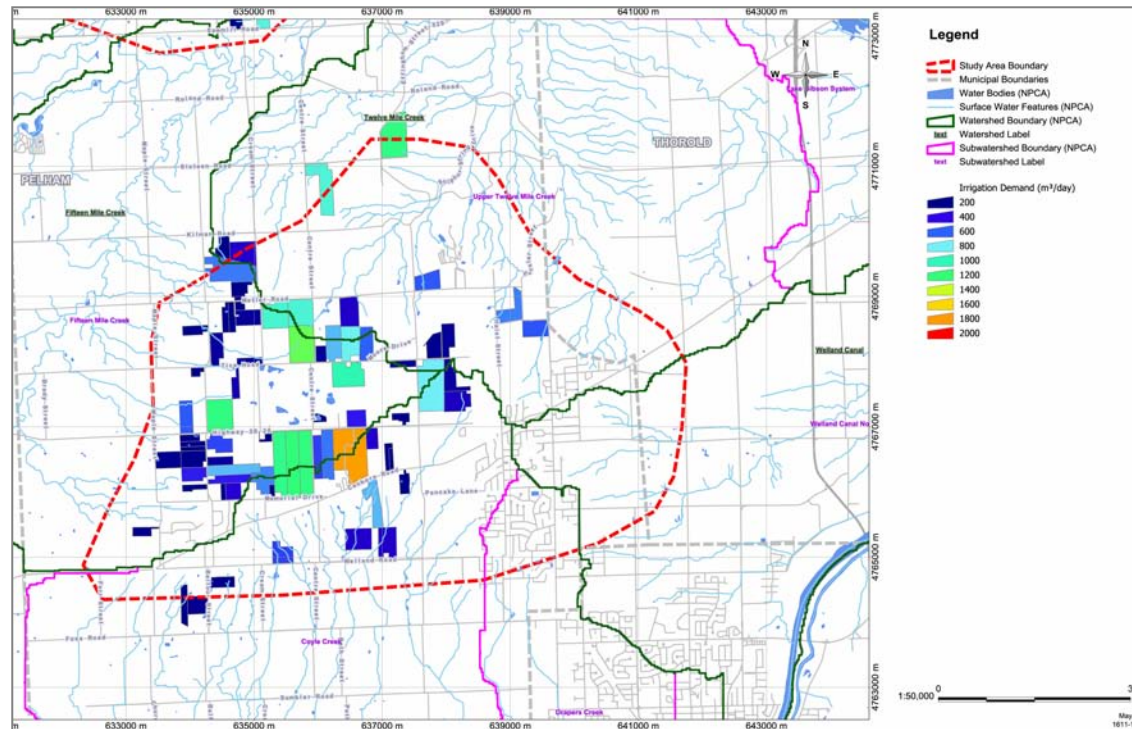
Water Supply Potential - Zone B



Study Results and Conclusions

- The main water supply aquifer in Zone B is the upper bedrock
- The probability of establishing a bedrock well to meet the irrigation demand of each parcel is typically less than 10% due to low well yields; and
- Even if a grower were able to establish a high yielding well(s) for irrigation, water quality is likely to be an issue.
- **Groundwater-based irrigation in Zone B is not feasible**

Water Supply Potential – South District



Study Results

- The main water supply aquifers in the South District consist of thick deposits of sand and gravel as well as the upper bedrock.
- The probability of establishing a water supply was greater than 50% for growers with irrigation demands that were less than 300m³/day (35 of 72 parcels).
- The overburden and bedrock water quality data is variable and may be suitable for irrigation purposes in some areas but not in others.
- Environmental implications of increasing the groundwater taking in the South District requires further study.

Conclusions – South District

Groundwater-based irrigation is not feasible for all parcels but may be an option for some of the smaller growers pending further study:

- A private well survey and sampling program;
- Collection of additional stream flow data from the watercourses in both wet and dry conditions to refine the baseflow and runoff estimates;
- Continuous groundwater level measurements should be collected at a select number of monitoring wells completed in the overburden and bedrock aquifer systems; and
- The Fonthill Kame-Delta Complex should be modeled using a finite element model (i.e., FEFLOW) to allow for a more realistic representation of surficial topography, particularly in the vicinity of watercourses where an understanding of groundwater / surface water interaction is critical.

Costs

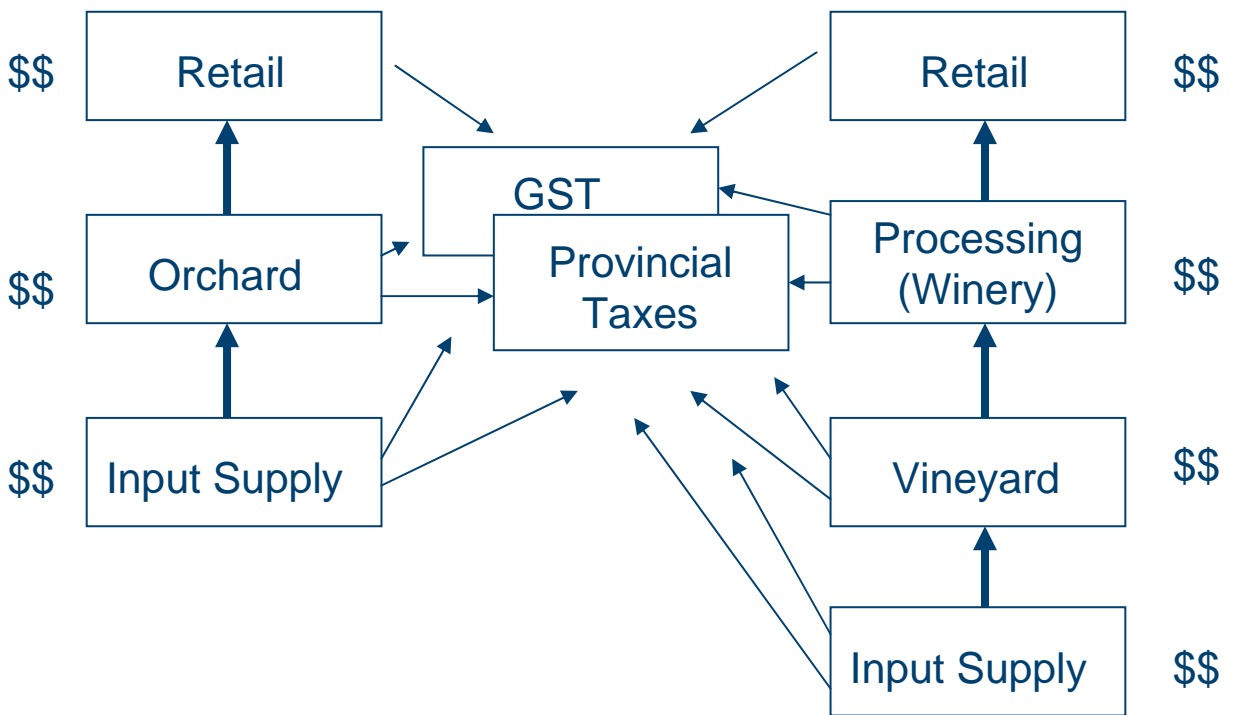
- Estimated individual well costs may range from approximately \$65,000 to \$105,000 depending on depth/diameter

Grower’s Direct Economic Benefits

Sector	Best case Annual	Worst case Annual
Tender Fruit	\$ 7.7 Million	\$ 7.3 Million
Wine Grapes	\$ 7.5 Million	\$ 2.8 Million
Horticulture & Greenhouse	\$ 0.538 Million	\$ 0.501 Million
Total	\$ 15.7 Million	\$ 10.6 Million

Agricultural Value Chains Generate Multi-level Benefits

(Locally, Regionally, Provincially, Nationally)



Eg: Fresh Fruit

Eg: Wine Grapes

Agricultural Value Chains

Length Defined by Business Levels

- “Beyond” the farm for produce
- “Before” the farm for inputs

Transactions generate economic activity

Different length for different products

Longer pathways create more economic activity

A peer review of the Economic Benefits Report was carried out, which suggested that the overall benefits are expected to be about 50% less than that stated in the report. As there are a number of assumptions and professional judgment involved in these studies, this variance in the potential benefits is not unusual.

Regional Economic Benefits

Sector	Growers	Value Chain (multi-level)
Tender Fruit	\$ 7.4 m	\$ 11.5 m
Wine Grapes	\$ 4.9 m	\$ 22.3 m
Horticulture & Greenhouse	\$ 500 k	\$ 1.1 m
Total	\$ 12.8 m	\$ 34.9 m

Provincial and National Economic Benefits

Sector	Provincial	National
Tender Fruit	\$ 23.1 m	\$ 1.4 m
Wine Grapes	\$ 80.6 m	\$ 4.8 m
Horticulture & Greenhouse	\$ 754 k	\$45 k
Total	\$ 104.4 m	\$ 6.2 m

Natural and Social Environment Report

The preferred intake options and distribution alternatives for each district were selected based on a consideration of natural and social features.

Intake Options Selection Criteria:

Potential volume impact to water source	Level of disturbance
Presence of notable aquatic habitat	Number of residences within 100 m
Bank stability	Number of communities within 500 m
Potential habitat for aquatic species at risk	Number of cemeteries within 100 m
Potential habitat for terrestrial species at risk	Number of landfills within 100 m
Presence of Area of Natural and Scientific Interest (ANSI)	Number of trail features within 100 m
Presence of evaluated wetlands	Number of public parks
Presence of woodlots > 2 ha	Licensed pits and quarries

Distribution Alternatives Selection Criteria:

- Number and type of watercourse crossings
- Number of woodlot crossings
- Number of Provincially Significant Wetland crossings
- Number of crossings of Areas of Natural and Scientific Interest

Natural and Social Environment Report: Preferred Alternatives

West District

Four intake options were eliminated for the following reasons:

- | | |
|----------|---|
| Intake 2 | Presence of notable aquatic habitat, Provincially Significant Wetland, Area of Natural and Scientific Interest, potential habitat for Species at Risk |
| Intake 4 | Recreational trail, Rykert Street Park, impacts to numerous non-user residents |
| Intake 5 | Relatively sensitive terrestrial community that may support plant species at risk |
| Intake 6 | Pipeline crossings of Escarpment Natural Area, the upper reaches of Twelve Mile Creek, and the Twelve Mile Creek Bottomlands, Decew Falls, and Decew Gorge Life Science ANSIs |

The open channel distribution alternative was eliminated for the west district because:

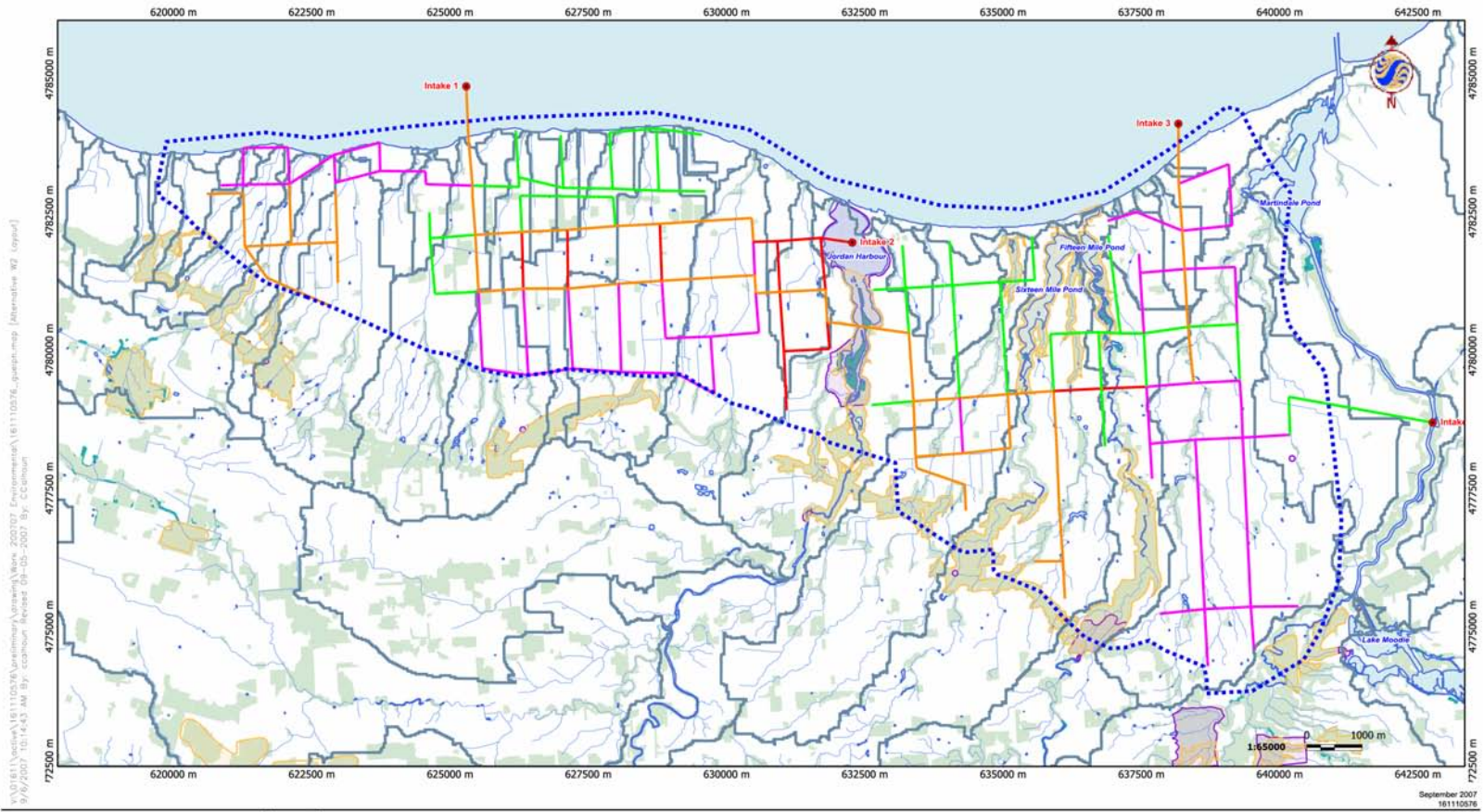
- It would involve drawing large quantities of water from watercourses containing fish habitat and transporting it across watershed boundaries
- Water would be added to watercourses with potentially differing chemical, physical and biological properties
- Irrigation water would be drawn from watercourses supporting fish habitat

The resultant preferred alternatives for the West District are:

Alternative W1 (Piped, Intake 1 or 3), and Alternative W2 (Piped, Intake 1 and 3)

Among alternatives W1 and W2, alternative W1 is the less expensive of the two alternatives. Therefore alternative W1 is the preferred alternative for the West District.

Preferred Alternative – West District



V:\01611\Niagara\1611103\30\workspace\Niagara\NI\02\202\202\02\Environ\mstr\1611103\FE_garage.mxd [Interactive: W] (copy)
 9/6/2007 10:44:03 AM By: ccaiburn Approved: 09-05-2007 By: CC alman

September 2007
1611103\FE



- Legend**
- - - Service Area
 - Stream
 - ANSI, Earth Science
 - ANSI, Life Science
 - Subwatershed Boundary
 - Waterbody
 - Woodlot
 - Wetland
 - Intake
 - Pipe Diameter (mm)
 - 150 - 300
 - 350 - 450
 - 500 - 600
 - 750 - 900

- Notes**
1. Coordinate System: UTM NAD 83 - Zone 17 (N)
 2. Base features provided by the Niagara Peninsula Conservation Authority and the Regional Municipality of Niagara, 2006.

Client/Project
Niagara Irrigation Study Phase 2
Natural and Social Environment Report

Figure No.
1

Title
**Pipe Distribution for East District
Alternative W2**

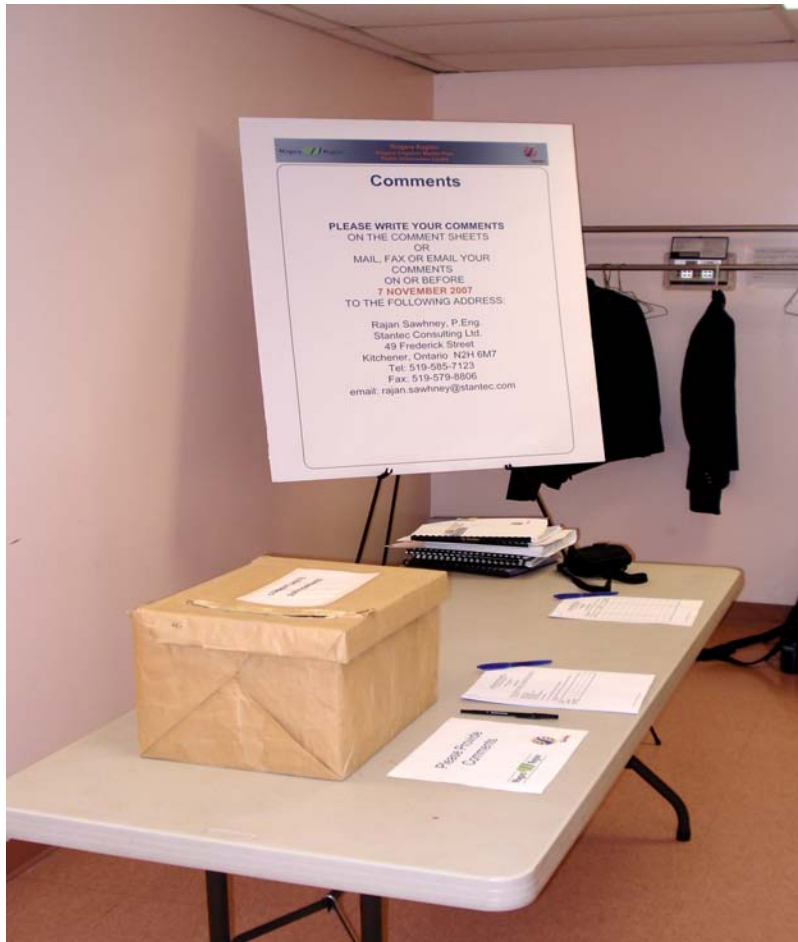
Comments

**PLEASE WRITE YOUR COMMENTS
ON THE COMMENT SHEETS
OR
MAIL, FAX OR EMAIL YOUR
COMMENTS
ON OR BEFORE
7 NOVEMBER 2007
TO THE FOLLOWING ADDRESS:**

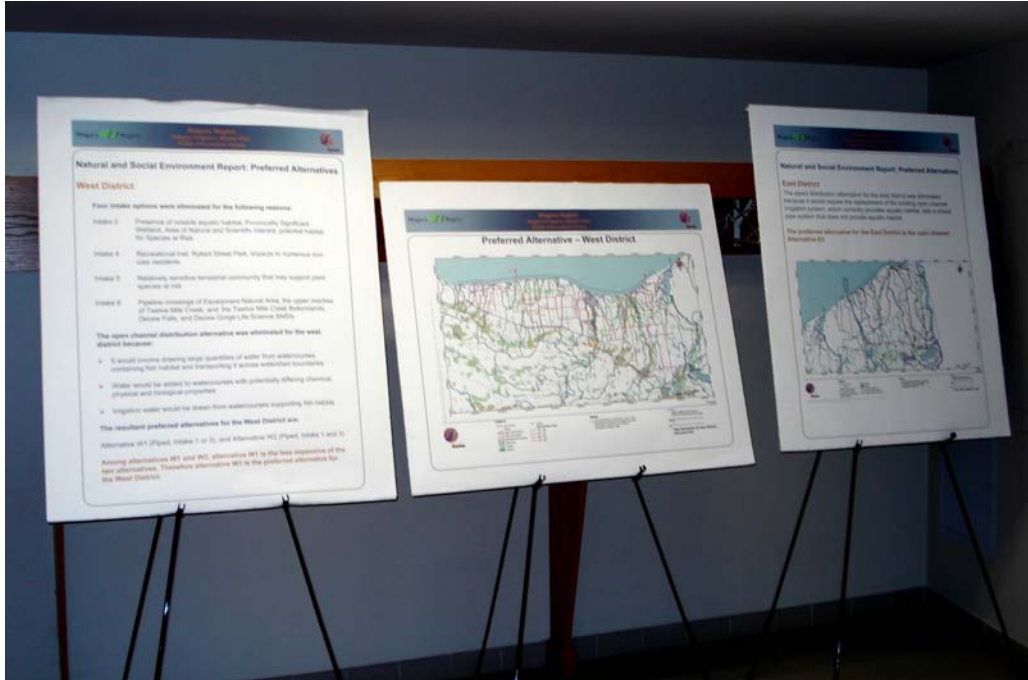
Rajan Sawhney, P.Eng.
Stantec Consulting Ltd.
49 Frederick Street
Kitchener, Ontario N2H 6M7
Tel: 519-585-7123
Fax: 519-579-8806
email: rajan.sawhney@stantec.com

Appendix C

Photographs







Natural and Social Environment Report, Preferred Alternatives - West District

Four viable options were identified for the following reasons:

- Issue 1: Presence of viable aquatic habitat, Provincially Significant Wetland, Area of Natural and Scientific Interest, preferred habitat for Spixes at Risk
- Issue 2: Recreational trail, Robert Street Park, impacts to numerous non-use residents
- Issue 3: Relatively sensitive terrestrial community that may support rare species at risk
- Issue 4: Pipeline coverage of Expenditure Natural Area, the upper reaches of Twelve Mile Creek, and the Twelve Mile Creek Watersheds, Stone Park, and Chance Group Life Science Area

The open channel distribution alternative was identified for the west district because:

- It would involve draining large quantities of water from watersheds containing fish habitat and transferring it to nearby watershed locations
- Water would be added to watersheds with potentially differing chemical, physical and biological properties
- Infiltrated water would be drawn from watersheds supporting fish habitat

The resultant preferred alternative for the West District was:

Alternative W1 (20km), Issue 1 to 3, and Alternative W2 (20km, Issue 1 and 2)

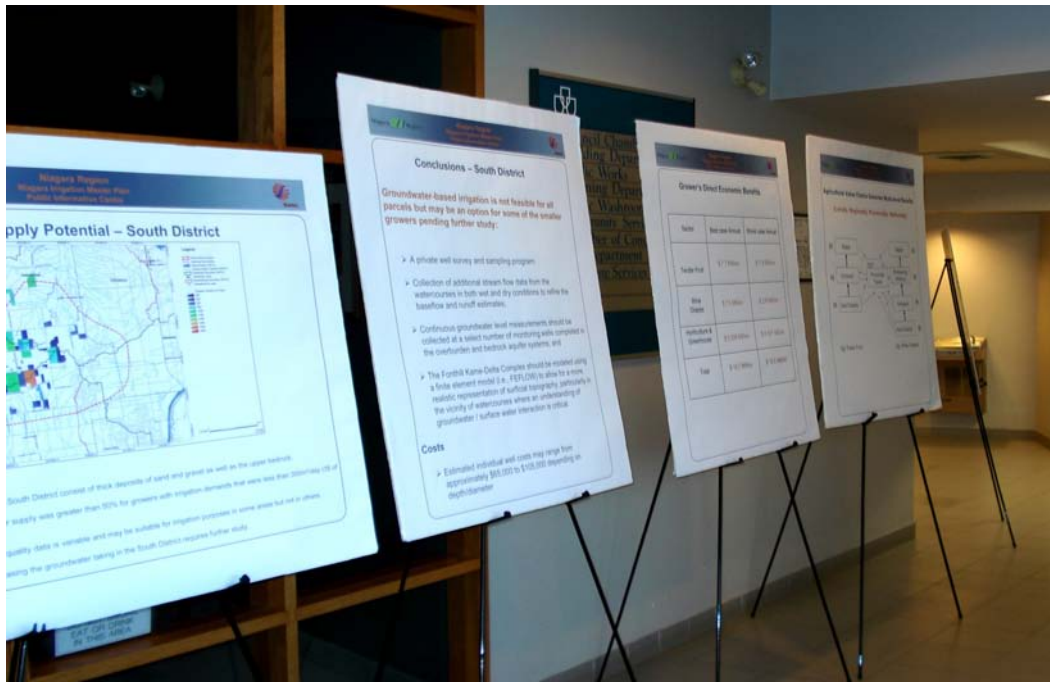
Among alternatives W1 and W2, alternative W1 is the best representative of the best alternative. Therefore alternative W1 is the preferred alternative for the West District.



Natural and Social Environment Report, Preferred Alternatives - East District

The most distribution alternative for the east district was identified because it would reduce the replacement of the existing storm water engine system which would provide a water volume with a lower pipe number that does not provide aquatic habitat

The preferred alternative for the East District is the open channel Alternative E1



Supply Potential - South District

South District consists of thick deposits of sand and gravel as well as the upper reaches of... supply water greater than 10% for growers with irrigation demands that are less than 100mm of... ability - data is variable and may be suitable for irrigation purposes in some areas but not in others... using the groundwater taking in the South District requires further study

Conclusions - South District

Groundwater-based irrigation is not feasible for all parcels but may be an option for some of the smaller growers pending further study:

- A gridler well survey and sampling program
- Collection of additional stream flow data from the watersheds in both east and by conditions to allow for baseflow and runoff estimates
- Continuous groundwater level measurements should be collected at a select number of monitoring wells completed in the overburden and bedrock aquifer systems and
- The FortRich Kame Delta Complex should be modeled using a finite element model (i.e. FEFLOW) to allow to create realistic representation of cultural geology connectivity in the vicinity of watersheds where an understanding of groundwater / surface water interaction is critical

Costs

- Estimated individual well costs may range from approximately \$60,000 to \$100,000 depending on depth/complexity

Grower's Direct Economic Benefit

Field	Net cost (k\$)	Direct value (k\$)
Field 1	177,000	217,000
Field 2	177,000	217,000
Field 3	177,000	217,000
Field 4	177,000	217,000
Field 5	177,000	217,000
Field 6	177,000	217,000
Field 7	177,000	217,000
Field 8	177,000	217,000
Field 9	177,000	217,000
Field 10	177,000	217,000
Field 11	177,000	217,000
Field 12	177,000	217,000
Field 13	177,000	217,000
Field 14	177,000	217,000
Field 15	177,000	217,000
Field 16	177,000	217,000
Field 17	177,000	217,000
Field 18	177,000	217,000
Field 19	177,000	217,000
Field 20	177,000	217,000
Field 21	177,000	217,000
Field 22	177,000	217,000
Field 23	177,000	217,000
Field 24	177,000	217,000
Field 25	177,000	217,000
Field 26	177,000	217,000
Field 27	177,000	217,000
Field 28	177,000	217,000
Field 29	177,000	217,000
Field 30	177,000	217,000
Field 31	177,000	217,000
Field 32	177,000	217,000
Field 33	177,000	217,000
Field 34	177,000	217,000
Field 35	177,000	217,000
Field 36	177,000	217,000
Field 37	177,000	217,000
Field 38	177,000	217,000
Field 39	177,000	217,000
Field 40	177,000	217,000
Field 41	177,000	217,000
Field 42	177,000	217,000
Field 43	177,000	217,000
Field 44	177,000	217,000
Field 45	177,000	217,000
Field 46	177,000	217,000
Field 47	177,000	217,000
Field 48	177,000	217,000
Field 49	177,000	217,000
Field 50	177,000	217,000



Appendix D

Attendance Registration Sheets

REGIONAL MUNICIPALITY OF NIAGARA
RAW WATER FOR AGRICULTURAL IRRIGATION
 Class Environmental Assessment

Public Information Centre
 October 23, 2007

ATTENDANCE REGISTRATION

Thank you for attending the Public Information Centre, we would appreciate a record of those attending.
 Please print legibly:

Name	Address	Telephone
John Jobson	RR# 224 Hunter Rd No 1.L	905 468 5577
Peter Penner	RR# 6 ¹³⁶⁴ Larkin Rd NOTL	905 468 2267
JOHN JANZEN	RR# 3 N.O.T.L CREEK RD.	905 468 3927
John Thwaites	RR# 3 NOTL	905-934-3880
Ken Slingerland	OMAFRA	905-562-1639
John Paxton	Paxton Ln. St David's	905 262 4345
MIKE DAVINI	3 Park Cir Box 1047 NOTL.	(905) 687-2607
KEVIN BUIS	1916 Townline Rd NOTL	905 937 5193
Rod Falk	1239 Lakeshore Rd N-O-T-L	905 934 1319
Dave Lambert	370 Line 1 RR# 2 NOTL	905 984 3182

REGIONAL MUNICIPALITY OF NIAGARA
RAW WATER FOR AGRICULTURAL IRRIGATION
 Class Environmental Assessment

Public Information Centre
 October 24, 2007

ATTENDANCE REGISTRATION

Thank you for attending the Public Information Centre, we would appreciate a record of those attending.
 Please print legibly:

Name	Address	Telephone
Don Culp	8659 Green lane	563-4361
Joe Monteforte	4061 23 rd St.	562-5209
Sergio Monteforte	4063 23 rd St	562-0485
Ron Wildreth	2485 Honsberger Ave	562-7142
Jeni Wildreth	2479 Honsberger Ave.	562-4897
L. Skilton	2043 Beamsville Mt. View	563-4339
PAW TIGCHELAAR	4606 21st STREET.	562-0864
Nat Wildreth	5529 Greenlane Beamsville	563-4423
TOM PLATT	2142 S.S.RD. JORDAN STA.	562-7234
Alice Kramer	4659 King St. E., Beamsville	562-8729
Kevin Boreen Culp	4645 Green Lane Beamsville	563-6885

REGIONAL MUNICIPALITY OF NIAGARA
RAW WATER FOR AGRICULTURAL IRRIGATION
 Class Environmental Assessment

Public Information Centre
 October 24, 2007

ATTENDANCE REGISTRATION

Thank you for attending the Public Information Centre, we would appreciate a record of those attending.
 Please print legibly:

Name	Address	Telephone
Gerard Schouwenaar	1688 Gregory Rd/St. Catharines	905 682-7325
Geo Culp	4389 John St	905 563-8328
M. van Bess	3055 17th St.	905 562 1822
John Van Geest	1869 7th St.	684-7144 905-931-7933
Doug Overholt	1645 Seventh St. St. Cath	905 6886421
Frank Overholt	1629 GREGORY ROAD, ST. CATH	905-682-7056
Sarah Marshall	7843 Range Rd 1 Smithville	957-6302
Carmie Fort	2248 Walnut ^{Jordan} Rd	562 4265
Doug Koop	1488 7th St St. Cath	6845/67
Bob Houn.	2448 S. Service Rd Jordan Station	562 5926
Ken Group	4402 13th St Jordan Station	562-5303

REGIONAL MUNICIPALITY OF NIAGARA
RAW WATER FOR AGRICULTURAL IRRIGATION
 Class Environmental Assessment

Public Information Centre
 October 24, 2007

ATTENDANCE REGISTRATION

Thank you for attending the Public Information Centre, we would appreciate a record of those attending.
 Please print legibly:

Name	Address	Telephone
Dave Wily	3595 17th St. Louth RR #1 St. Catharines	call (905) 651-1537
DON WILEY	RR #1 St Cath. L2R6P7 1249 8th ave L.	905 6854497
Dave Wall	1825 7th Street St. Catharines	905 682-4032
RALPH FRAYNE	4198 KING ST. BEAMSVILLE	5637106
ALICE FRAYNE	4198 KING ST BEAMSVILLE	905-563-7106
LES KECHAN	4585 KING ST BEAMSVILLE	905 5634830
KEN DURHAM	3463 Reg Rd 14 Smithville L0R2A0	905 957-7279
HEATHER CARTER	31 WOODSIDE SQUARE FONTHILL, ON L0S 1E4	905 892-1176
ED BOEKESTYN	4019 13th St LOUTH JORDAN STN.	905 562 4569
ART MOYER	114 RIDGE RD E GRIMSBY, L3M 4G7	905 945-2408
LEN PENNACHETTI	3836 MAIN ST. JORDAN L0R1S0	562-3587

Appendix E

Written Comments

COMMENTS:

I would Favor the Idea if I was
Ashamed that I would get water for our Farm
needs when needed, and the costs Afford-
able. I am land locked no creek near
at hand and have to take water from
My Neighbours Farm pond which is served
by the 3 mile creek which has been
Mostly dry in sufficient water supply
pumped to the creek and channels.
We all pay for water but don't get
it. This should be changed so that
we all get water when needed.
The supply should be increased to
supply the need of 3 mile creek

Government should be encouraged to
Finance such projects

COMMENTS:

GREAT IDEA

THE SOONER THE BETTER

PLEASE MOVE FORWARD

WITH THESE PLANS

Day Clark

COMMENTS:

CONCEPT IS GREAT

WE NEED THIS SOONER THAN LATER

COMMENTS:

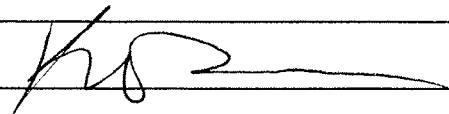
The idea is fantastic. When can we get this implemented. The sooner the better.

COMMENTS:

Looks great! I love the WI option.
We really need this in "Greenbelt."

COMMENTS:

- This is a great START
- All Agriculture should have a supply of water to irrigate from.
- Look at the agriculture Impact study and use those figures to supply water to the livestock and crop (cash crop) Farmers. They also pay taxes and need water to maximize their yields.
- We have to compete with other farmers in Ontario that irrigate as well as other countries (ie New Mexico U.S.A.)
- We are very short of water above the escapement.



COMMENTS:

My Question: If this proposal proceeds, There will be a large network of pipes throughout West St. Catharines Lincoln Beausville etc.

While all the digging has been done all the crossings made would it be worth consideration to add another pipe into the excavation and supply drinking water to this area as well. Presently, this area is served by a concoction of wells cisterns rain water, trucked in water. ~~with~~ While we all remember walkerton ~~where~~ would this be a cost effective timing to service the area with potable water with little further expense than the supply piping

REGIONAL MUNICIPALITY OF NIAGARA
RAW WATER FOR AGRICULTURAL IRRIGATION
Class Environmental Assessment

Public Information Centres
Oct 24, 2007

COMMENT SHEET

Thank you for your interest in this project. You are encouraged to provide your comments on the back of this sheet and leave them in the box provided at the Public Information Centre or forward them to:

Rajan Sawhney, P.Eng.
Stantec Consulting Ltd.
49 Frederick Street
Kitchener, Ontario N2H 6M7
Tel: 519-585-7123
Fax: 519-579-8806
email: rajan.sawhney@stantec.com

Please print legibly.

Your comments (the back portion of this sheet) may be published.

You may provide your personal information below (your personal information will be kept confidential):

NAME:
ADDRESS:
TELEPHONE:

- Good project - we need water
- the economic benefit for Greenhouses is likely understated.
 - we are limited in some of our future prospects by the Availability of water, and the ability of the town to provide water.
- I believe you are concentrating on the correct areas of high agricultural benefit.

**REGIONAL MUNICIPALITY OF NIAGARA
RAW WATER FOR AGRICULTURAL IRRIGATION
Class Environmental Assessment**

Public Information Centres
Oct 24, 2007

COMMENT SHEET

Thank you for your interest in this project. You are encouraged to provide your comments on the back of this sheet and leave them in the box provided at the Public Information Centre or forward them to:

Rajan Sawhney, P.Eng.
Stantec Consulting Ltd.
49 Frederick Street
Kitchener, Ontario N2H 6M7
Tel: 519-585-7123
Fax: 519-579-8806
email: rajan.sawhney@stantec.com

Please print legibly.

Your comments (the back portion of this sheet) may be published.

You may provide your personal information below (your personal information will be kept confidential):

NAME:
ADDRESS:
TELEPHONE

We absolutely need this project, - as soon as possible. Let's move it forward. Start with the West (Lincoln & St. Catharines)

Sawhney, Rajan

From:
Sent: Friday, October 26, 2007 12:51 PM
To: Sawhney, Rajan
Subject: Raw water for agriculture

Dear Rajan

Just wanted to send a few comments your way re the raw water study. We feel there is a great urgency to have good quality raw water available for our crops. As we move to higher yield more sensitive crops our water quality has become more and more of an issue. No longer does the quality of water available in 15 mile creek serve valuable to our crops. This summer we became dependant on it but this source soon proved to troublesome and so quit pumping from the creek soon after we began because the Sodium Chloride was too high. We were then forced to move to trucked water. This is too expensive an option and even the chloride levels in Municipal water can be more of a problem then benefit. I feel the potential benefit to the greenhouse sector is greater then suggested as I know the lost production experienced by myself and my brother in law both on 15 mile creek was hampered in \$100K's. A number of us on 7th St have been interested in developing this further to and would appreciate seeing it move along quickly and have expressed a willingness to invest in a similar project privately though we are hampered by the politics involved.

Thank-you for your work in all of this
Best Regards

John Van Geest

COMMENTS:

WE ARE VERY HOPEFUL THAT A LAW WATER IRRIGATION SYSTEM WILL BE ESTABLISHED IN OUR AREA. WE LIVE AND FARM ON THE DOAMSVILLE LICHEN ON KING ST AT MERRITT RD.

OUR CROP IS TOWN FRUIT (PEARS, PLUMS) AND APPLES. WE HAVE AN IRRIGATION POND ON OUR FARM WHICH IS INADEQUATE TO SUPPLY THE TRICKLE IRRIGATION FOR OUR FRUIT TREES.

CUSTOMERS WANT LARGE FRUIT - WHICH IS NOW IMPOSSIBLE TO PROVIDE IN DRY SEASONS DESPITE OUR BEST FARMING PRACTICES.

UNLESS ^{WATER FOR} IRRIGATION IS MADE AVAILABLE THIS FARM WILL NOT BE FINANCIALLY VIABLE. IT IS NOT REASONABLE TO EXPECT FARMERS TO WORK SO HARD AND LOSE MONEY EVERY YEAR. NO YOUNG PERSON WOULD BE WILLING TO DO IT.

WATER WOULD BE A LIFESAVEN FOR OUR FARM.

COMMENTS:

I believe irrigation is extremely important to maintaining the greenbelt status of this area and without some assistance to maintaining some continued agricultural activities will be impossible.

Unless this assistance is forthcoming I believe continued tender fruit production will be ^{not} continued.

Our crop for the year 2007 had been reduced by 40% give or take.

Thus I will support any effort to provide water for irrigation.

COMMENTS:

Potential of 4 mile creek Aquifer
not presented (St Davids)
quality of water contaminated by
cyanamid at headwaters 4 mile

consultant would not answer ?
only wanted information from Farmer

Display Boards of little interest for
NATH Farmer

No use having meeting Beamsville
farmers their 50 L.