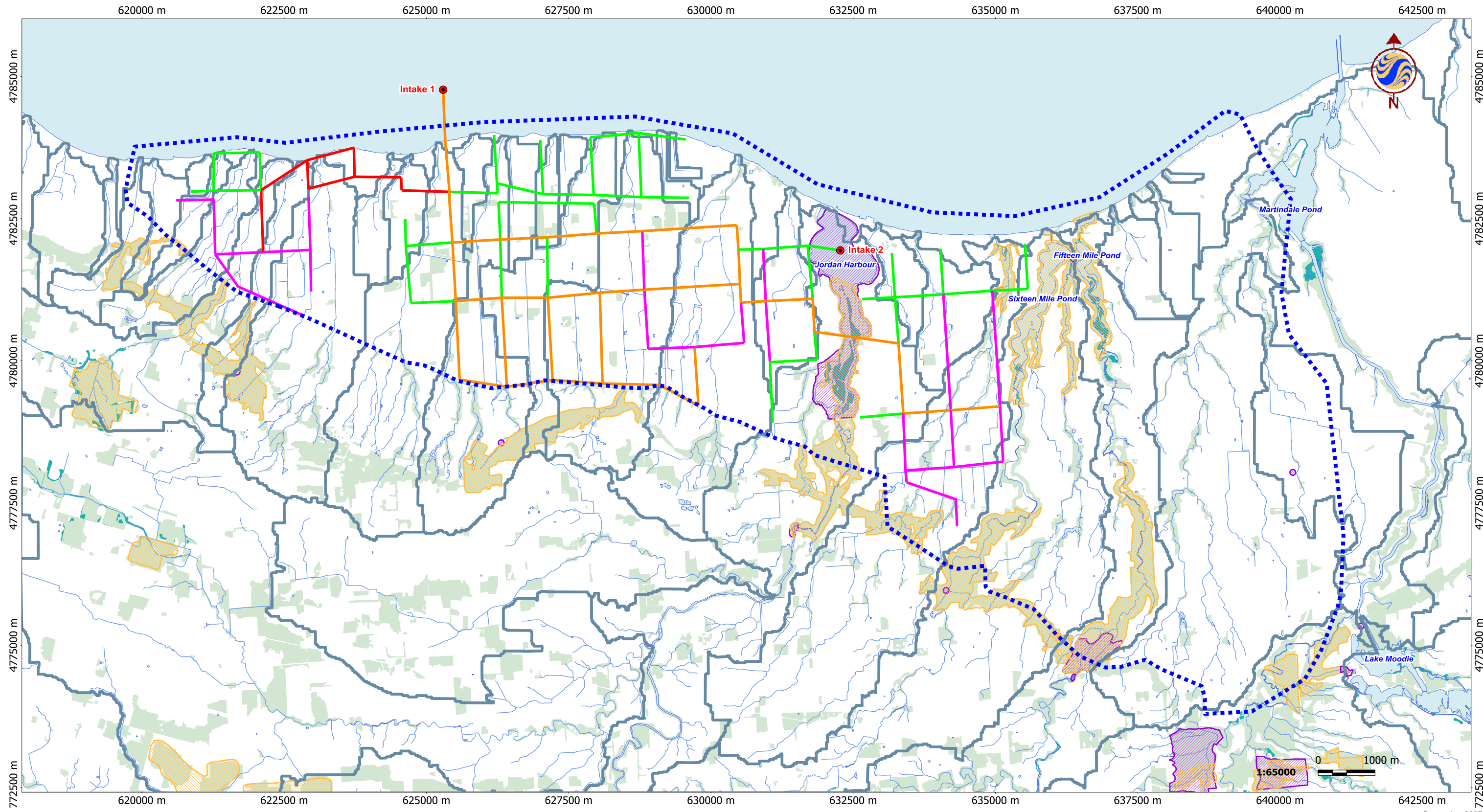


V:\01611\active\161110576\preliminary\drawing\Work\_200707\_Environmental\161110576\_guelph\_20071120.map [Alternative W4 Layout]  
 11/20/2007 12:07:54 PM By: ccalhoun Revised 09-05-2007 By: C.Calhoun



September 2007  
 161110576



**Legend**

- |  |                       |                           |           |
|--|-----------------------|---------------------------|-----------|
|  | Service Area          |                           | Intakes   |
|  | Stream                | <b>Pipe Diameter (mm)</b> |           |
|  | ANSI, Earth Science   |                           | 150 - 300 |
|  | ANSI, Life Science    |                           | 350 - 450 |
|  | Subwatershed Boundary |                           | 500 - 600 |
|  | Waterbody             |                           | 750 - 900 |
|  | Woodlot               |                           |           |
|  | Wetland               |                           |           |

**Notes**

- Coordinate System: UTM NAD 83 - Zone 17 (N)
- Base features provided by the Niagara Peninsula Conservation Authority and the Regional Municipality of Niagara, 2006.

Client/Project  
 Niagara Irrigation Study Phase 2  
 Natural and Social Environment Report

Figure No.  
 7

Title  
**Pipe Distribution for West District  
 Alternative W4**