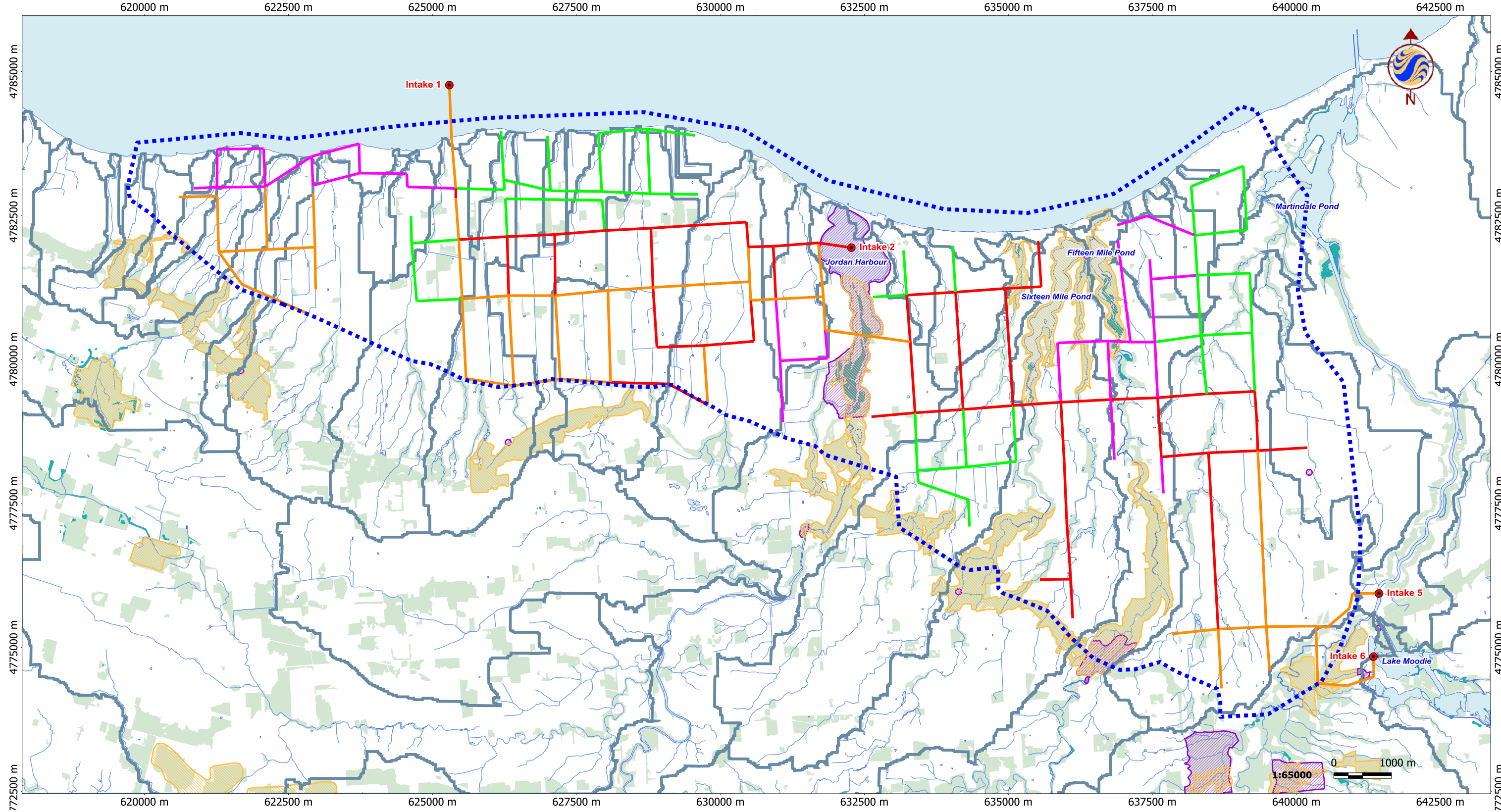


V:\01611\active\161110576\preliminary\drawing\Work 200707 Environmental\161110576_guelph.map [Alternative W3 Layout]
 9/14/2007 3:18:54 PM By: ccalhoun Revised 09-05-2007 By: CCalhoun



September 2007
 161110576



Legend

	Service Area		Intake
	Stream	Pipe Diameter (mm)	
	ANSI, Earth Science		150 - 300
	ANSI, Life Science		350 - 450
	Subwatershed Boundary		500 - 600
	Waterbody		750 - 900
	Woodlot		
	Wetland		

Notes

1. Coordinate System: UTM NAD 83 - Zone 17 (N)
2. Base features provided by the Niagara Peninsula Conservation Authority and the Regional Municipality of Niagara, 2006.

Client/Project
 Niagara Irrigation Study Phase 2
 Natural and Social Environment Report

Figure No.
 6

Title
**Pipe Distribution for West District
 Alternative W3**