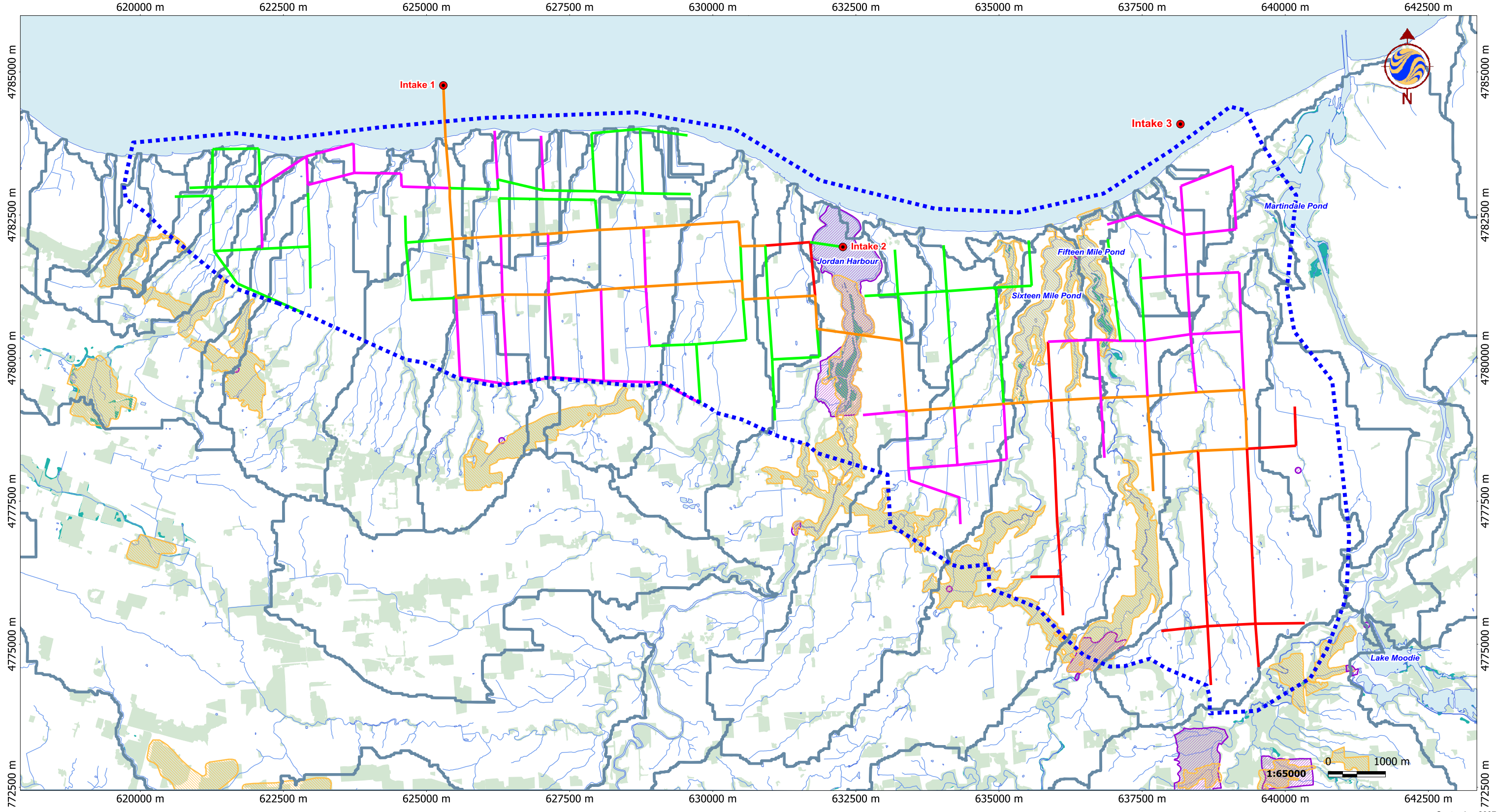


V:\01611\active\161110576\preliminary\drawing\Work 200707 Environmental\161110576_guelph_20071120.map [Alternative W1 Layout]
 11/21/2007 5:46:01 PM By: ccolhour Revised 09-05-2007 By: CColhour



September 2007
 161110576



Legend

- | | | | |
|--|-----------------------|---------------------------|-----------|
| | Service Area | | Intake |
| | Stream | Pipe Diameter (mm) | |
| | ANSI, Earth Science | | 150 - 300 |
| | ANSI, Life Science | | 350 - 450 |
| | Subwatershed Boundary | | 500 - 600 |
| | Waterbody | | 750 - 900 |
| | Woodlot | | |
| | Wetland | | |

Notes

- Coordinate System: UTM NAD 83 - Zone 17 (N)
- Base features provided by the Niagara Peninsula Conservation Authority and the Regional Municipality of Niagara, 2006.

Client/Project
 Niagara Irrigation Study Phase 2
 Natural and Social Environment Report

Figure No.
 4

Title
**Pipe Distribution for West District
 Alternative W1**