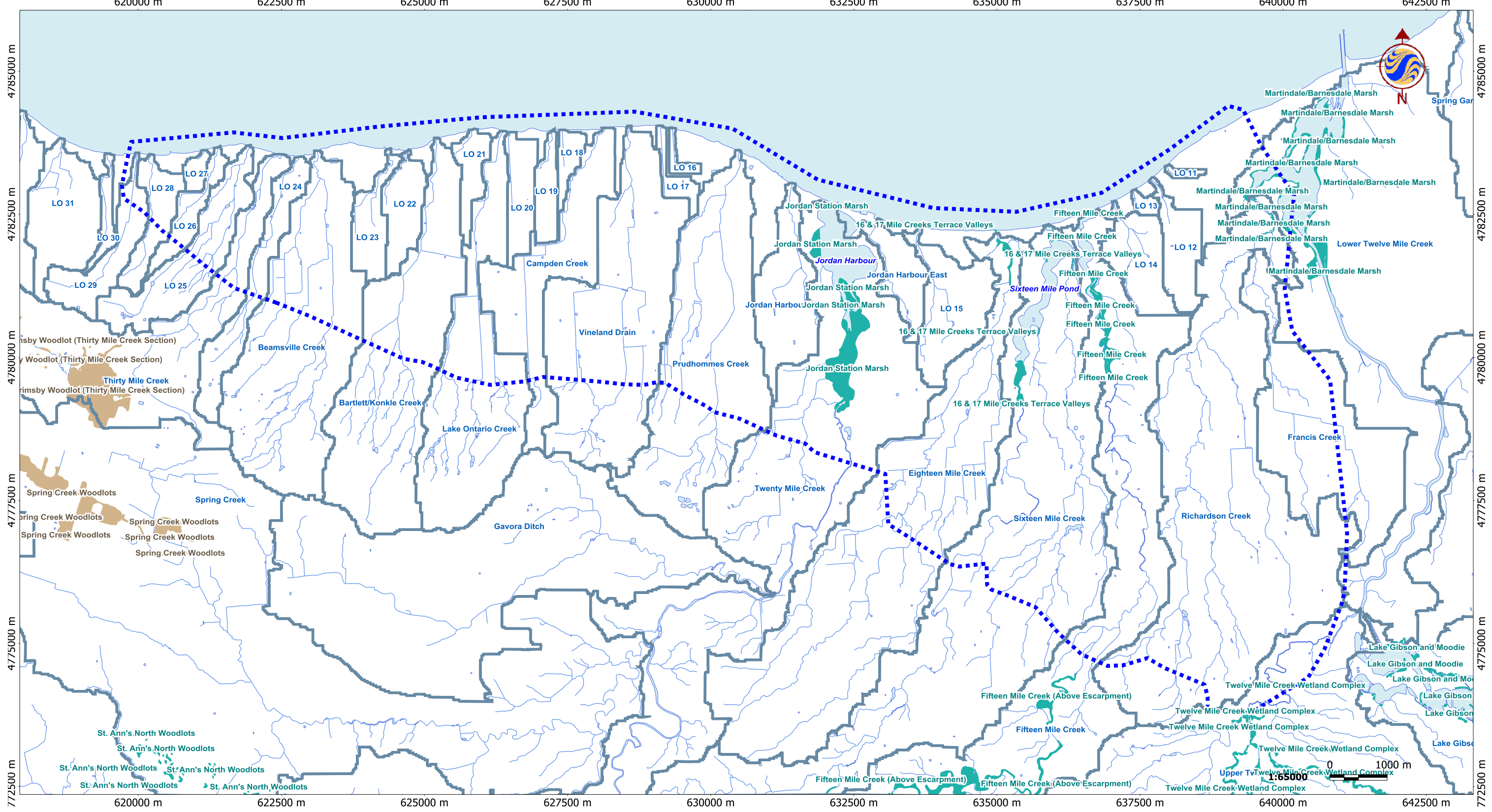


V:\01611\active\161110576\preliminary\drawing\Work\_200707\_Environmental\161110576\_guelph-map [Subwatersheds West Layout]  
 9/14/2007 3:17:03 PM By: ccalhoun Revised 09-04-2007 By: C.Calhoun



September 2007  
 161110576



**Stantec**

**Legend**

- Stream
- Subwatershed Boundary
- Waterbody
- Locally Significant Wetland
- Provincially Significant Wetland
- Service Area
- LO 10 Subwatershed Name
- LO = Lake Ontario
- NR = Niagara River

**Notes**

1. Coordinate System: UTM NAD 83 - Zone 17 (N)
2. Base features provided by the Niagara Peninsula Conservation Authority and the Regional Municipality of Niagara, 2006.

Client/Project  
 Niagara Irrigation Study Phase 2  
 Natural and Social Environment Report

Figure No.  
 1

Title  
**Subwatersheds and Wetlands - West**