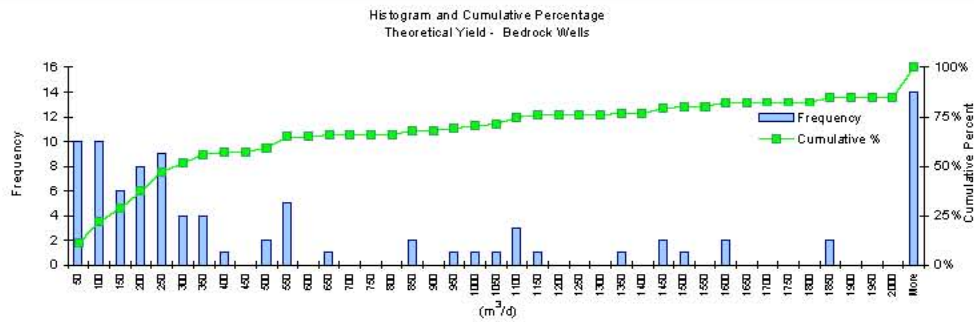
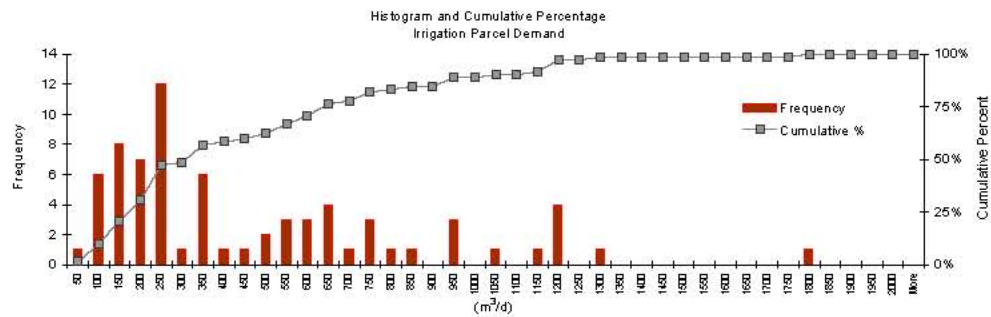
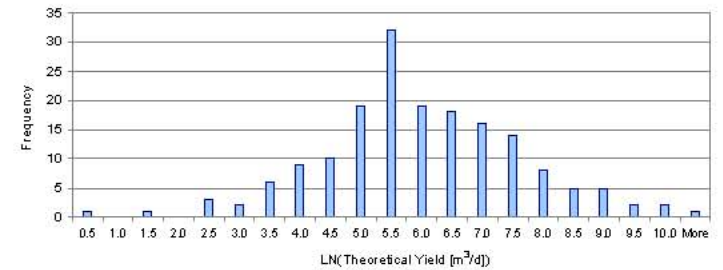


Descriptive Statistics - South District

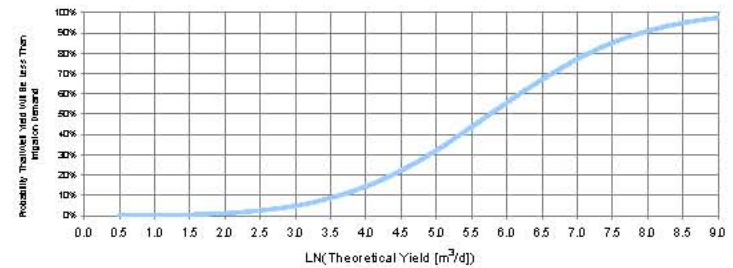
	Overburden Theoretical Yield (m ³ /d)	Bedrock Theoretical Yield (m ³ /d)	Combined Overburden/Bedrock Theoretical Yield (m ³ /d)	Irrigation Parcel Demand (m ³ /d)
Mean	942	1528	1250	448
Median	257	272	270	322
Standard Deviation	2488	3924	3325	372
Range	20781	28810	28819	1734
Minimum	1	10	1	50
Maximum	20782	28820	28820	1784
Count	82	91	173	72



Lognormal Combined Bedrock and Overburden Theoretical Yield Distribution
(Mean of LN($\hat{\chi}$)=5.77, Stand. Dev. of LN($\hat{\chi}$)=1.66)



Bedrock and Overburden Theoretical Yield Cumulative Probability Distribution



Client/Project
Niagara Region
Raw Water for Irrigation Study - Phase 2
Hydrogeological Assessment of West District Zone B and South District
Figure No.