

# Appendix H - Pole Details

Revised November 15, 2022

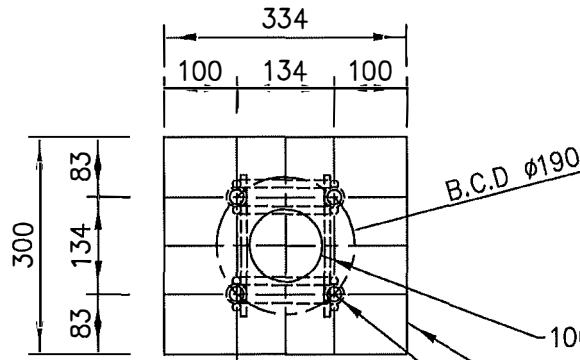
**NOTES:**

1. ASSEMBLY TO BE GALVANIZED ACCORDING TO CAN/CSA-G164-M92
2. BOLTS C/W WASHER
3. BOLTS ARE IMPERIAL THREAD
4. BOLTS AS PER ASTM A325
5. BOLT THREADS TO BE GIVEN A COATING OF WHITE GREASE
6. LABEL AVAILABLE ON REQUEST, MUST SPECIFY DURING ORDERING OF ANCHOR

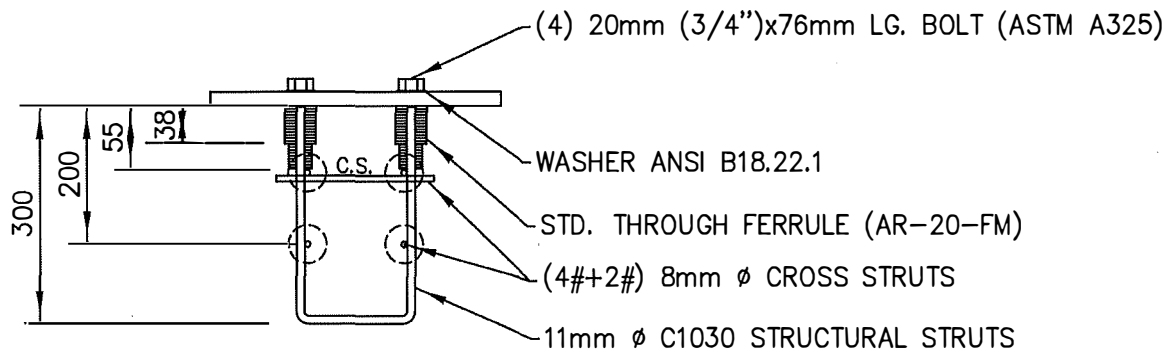
**LABEL (REF. TO NOTE 6)**

**INSTRUCTIONS :**

1. DO NOT REMOVE BOLTS FROM THREADED COILS
2. PLACE WOOD TEMPLATE OVER FORM TUBING.
3. TIE DUCTS TO ANCHORAGE.
4. TIE ANCHORAGE TO STEEL IN FOOTING.
5. ADJUST FOR LEVEL USING A CARPENTER'S LEVEL SEVERAL WAYS ON THE TEMPLATE.
6. SECURE IN THE LEVEL POSITION PRIOR TO POURING CONCRETE TO THE TOP OF THE FORMWORK.
7. REMOVE WOOD TEMPLATE AND FINISH CONCRETE ON TOP OF FOOTING AS SOON AS CONCRETE AS AN INITIAL SET. REPLACE BOLTS FULLY TO THREADED FERRULES.



**PLAN (TEMPLATE)**



**ELEVATION**

Distributed By:

Sentinel Pole & Traffic Equipment Limited  
375 Admiral Blvd., Unit 3  
Mississauga, ON (905) 5654-2929

GEN	AUG 2015
REV	DESCRIPTION
DATE	BY

THIS DRAWING AND THE INFORMATION CONTAINED ARE THE PROPERTY OF NCA/ACROW-RICHMOND. THEY ARE NOT TO BE COPIED OR MISUSED IN ANY WAY WITHOUT OUR WRITTEN PERMISSION.

THIS IS A PROPOSAL DRAWING. DO NOT USE FOR CONSTRUCTION UNTIL APPROVED BY CONTRACTOR OR CONSULTING ENGINEER.

APP'D. BY..... DATE.....



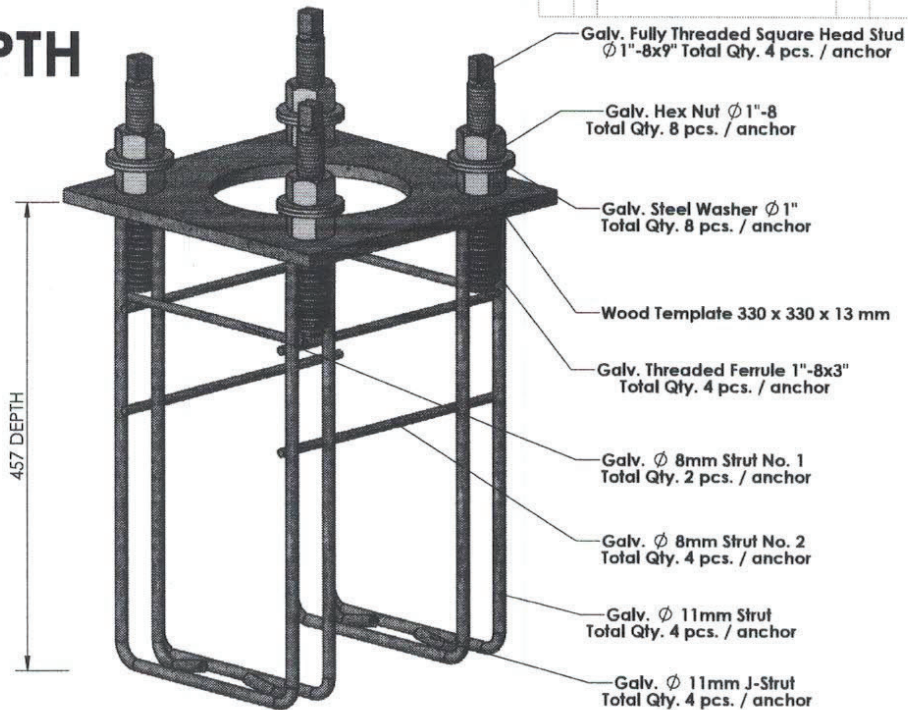
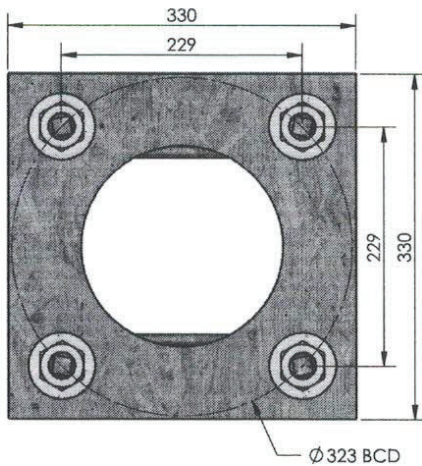
172 BETHRIDGE ROAD, ONTARIO, CANADA M9W 1N3  
TELEPHONE: (416)245-4720 FAX: (416)242-2727

TITLE: PRE-SET ANCHOR / " Ø x 300mm  
190mm B.C.D. (DGR-1FB)

CONTRACTOR: SENTINEL Pole and Traffic Equipment Ltd.

DRAWN BY: Dwarka DATE: Aug. /13 SCALE: 1 : 10 JOB: 13134 R2

# Niagara Region 323 BCD x 457 DEPTH NRS 2001



## Notes:

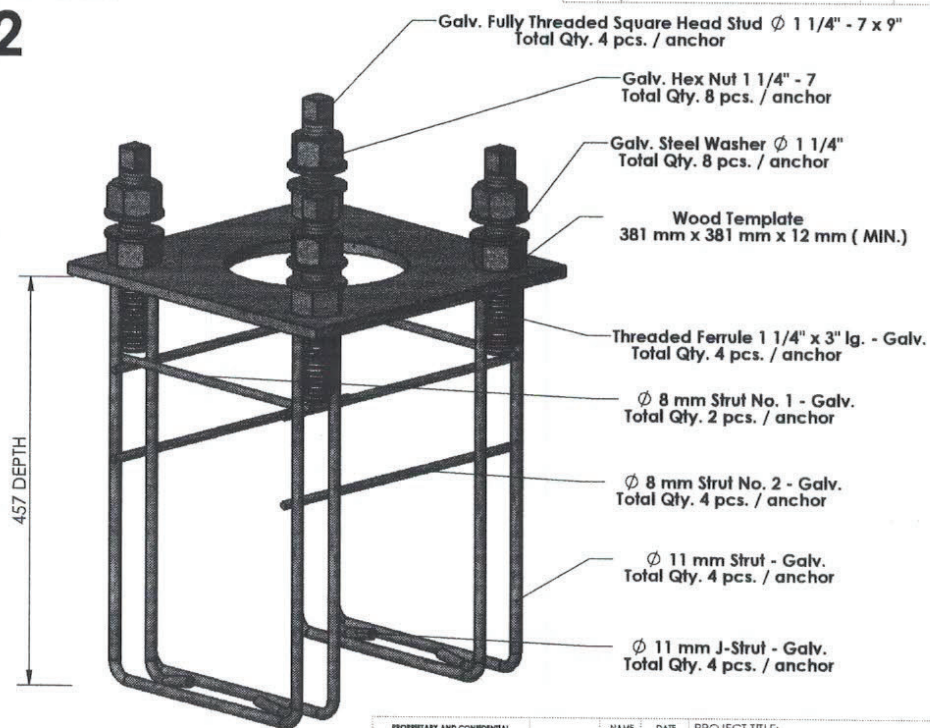
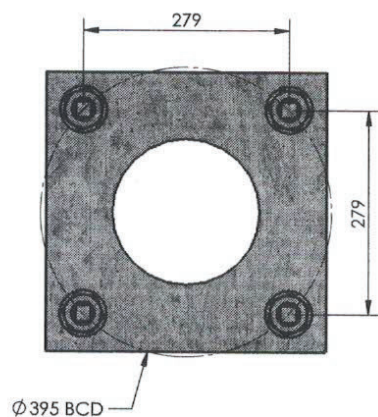
- 1 Studs shall be factory set in ferrule with preapplied threaded locking compound.
- 2 Assembly nuts shall be shipped hand tight only.
- 3 All dimensions are in millimetres unless otherwise shown.

<b>PROPRIETARY AND CONFIDENTIAL</b> THE INFORMATION CONTAINED IN THIS DRAWING IS THE SOLE PROPERTY OF AMG METALS INC. ANY REPRODUCTION IN PART OR AS A WHOLE WITHOUT THE WRITTEN PERMISSION OF AMG METALS INC. IS PROHIBITED.		NAME: VS DATE: 17/04/2014 DRAWN: JP ENG APPR: JP UNLESS OTHERWISE SPECIFIED: DIMENSIONS ARE IN MM DID NOT SCALE DRAWING	PROJECT TITLE:  TITLE: ANCHOR 323 BCD x 457 DEPTH Niagara Region CONTRACTOR: SIZE: DWG. NO. RD 101-1N REV SCALE: WEIGHT: SHEET 1 OF 5
<b>amg</b> <b>METALS INC</b>		21 Bales Drive West Sharon (Newmarket) Ontario, Canada, L0G 1V0 Tel: 905-953-4111 Fax: 905-953-0844 www.amgmetals.com	

Polefab # 100000127

Type 3 Anchor Assembly

# 395 BCD x 457 DEPTH SD - 205 - REV. R-2



## Notes:

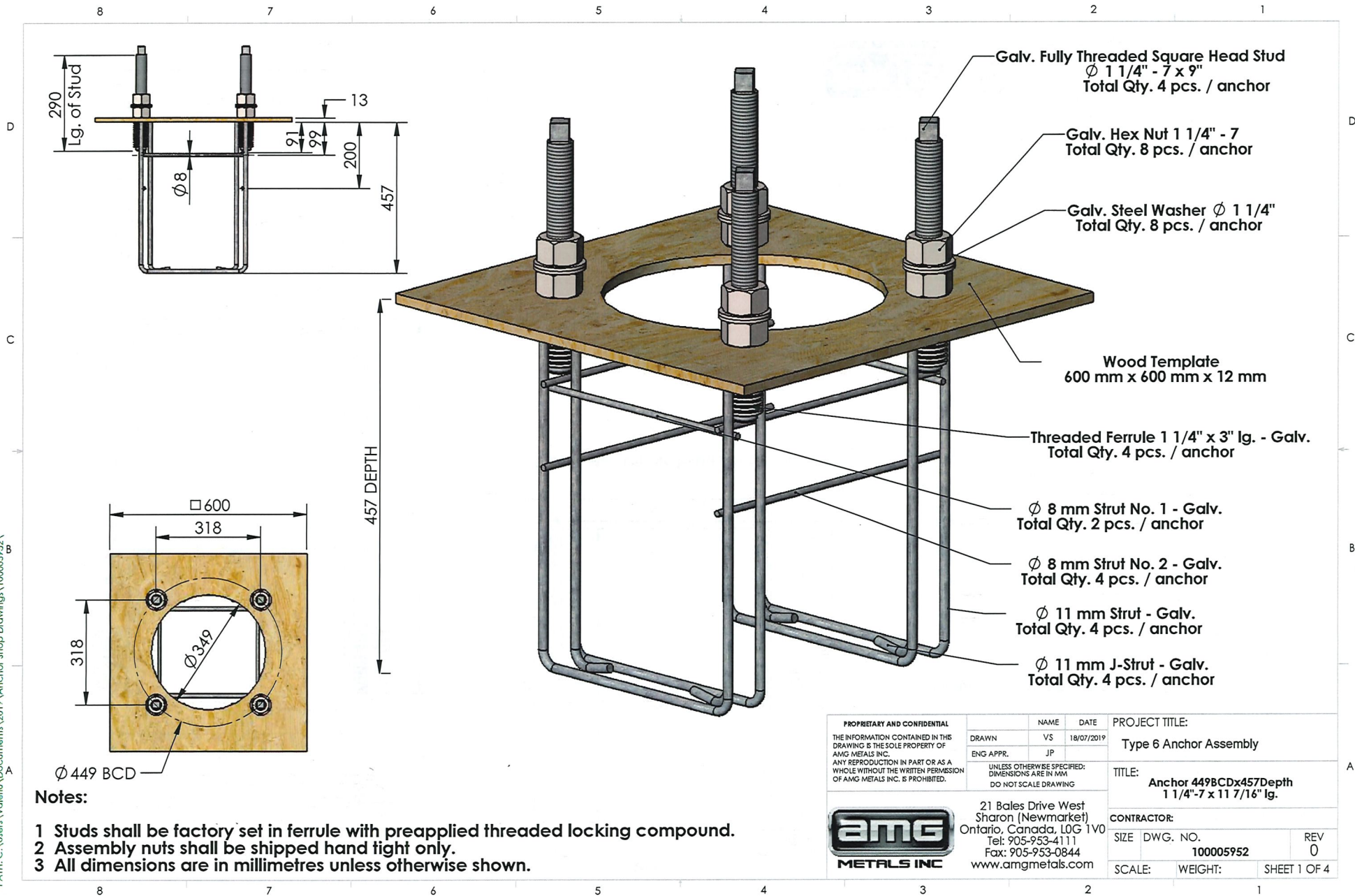
- 1 Studs shall be factory set in ferrule with preapplied threaded locking compound.
- 2 Assembly nuts shall be shipped hand tight only.
- 3 All dimensions are in millimetres unless otherwise shown.


<b>PROPRIETARY AND CONFIDENTIAL</b> THE INFORMATION CONTAINED IN THIS DRAWING IS THE SOLE PROPERTY OF AMG METALS INC. ANY REPRODUCTION IN PART OR AS A WHOLE WITHOUT THE WRITTEN PERMISSION OF AMG METALS INC. IS PROHIBITED.		NAME VS DATE 30/04/2012	PROJECT TITLE: <b>ANCHOR 395 BCD x 457 DEPTH</b>
UNLESS OTHERWISE SPECIFIED: DIMENSIONS ARE IN MM DO NOT SCALE DRAWING		CONTRACTOR: SIZE DWG. NO. 2001 - SD 205 REV SCALE: WEIGHT: SHEET 1 OF 1	
34 HOLBY AVENUE BRAMPTON, ONTARIO CANADA L6Y 2M1 Tel: 905-453-4113 Fax: 905-453-7664 PO Box 176 21 Indus Drive Newmarket, Ontario Canada L3Y 4Z1 Tel: 905-933-4111 Fax: 905-933-0844 www.amgmetals.com		Metals Inc.	

PoleLab # 100000134

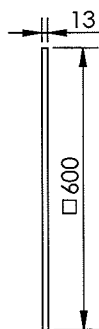
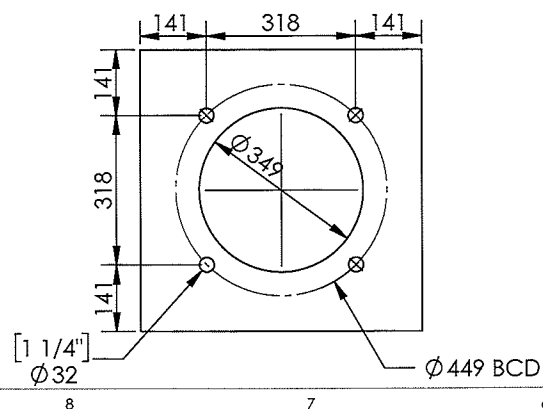
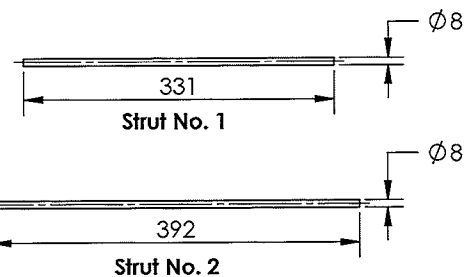
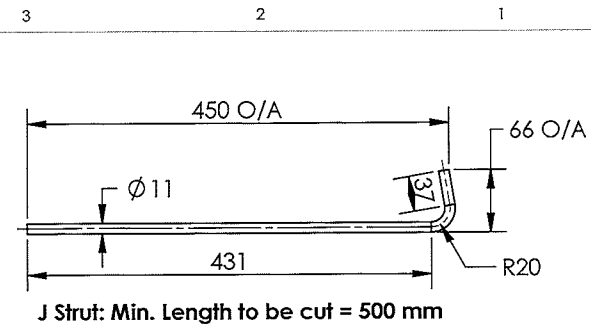
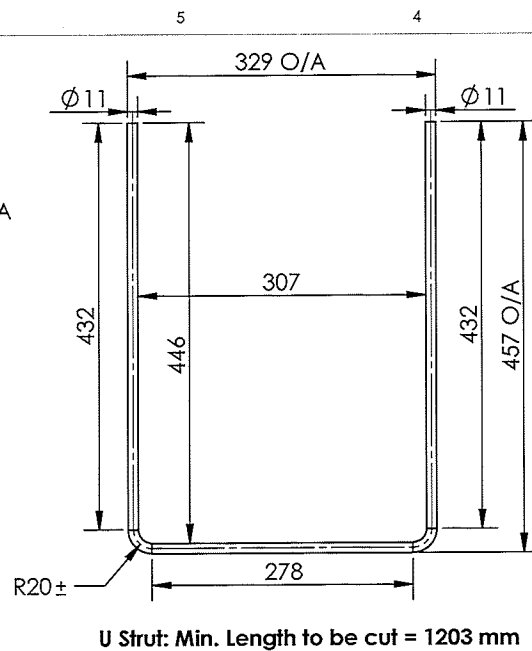
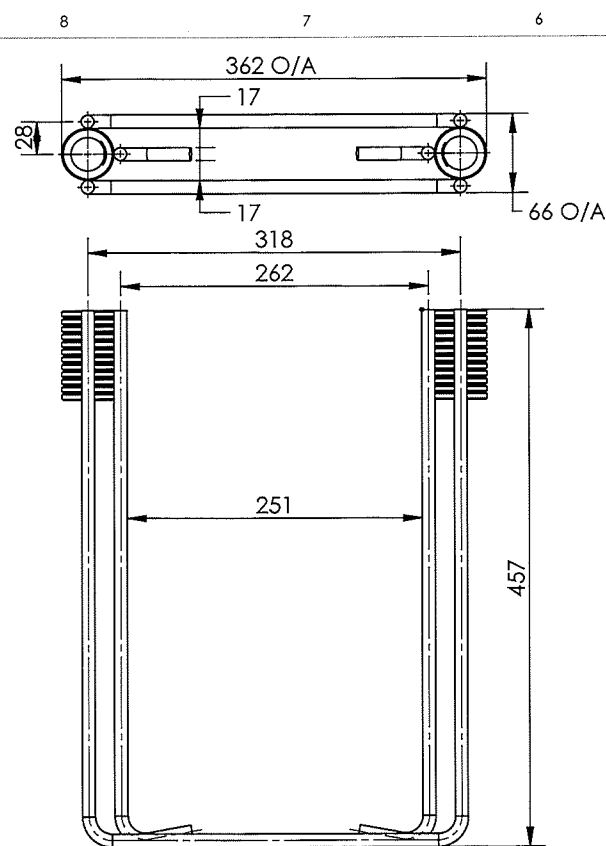
Type 5 Anchor Assembly



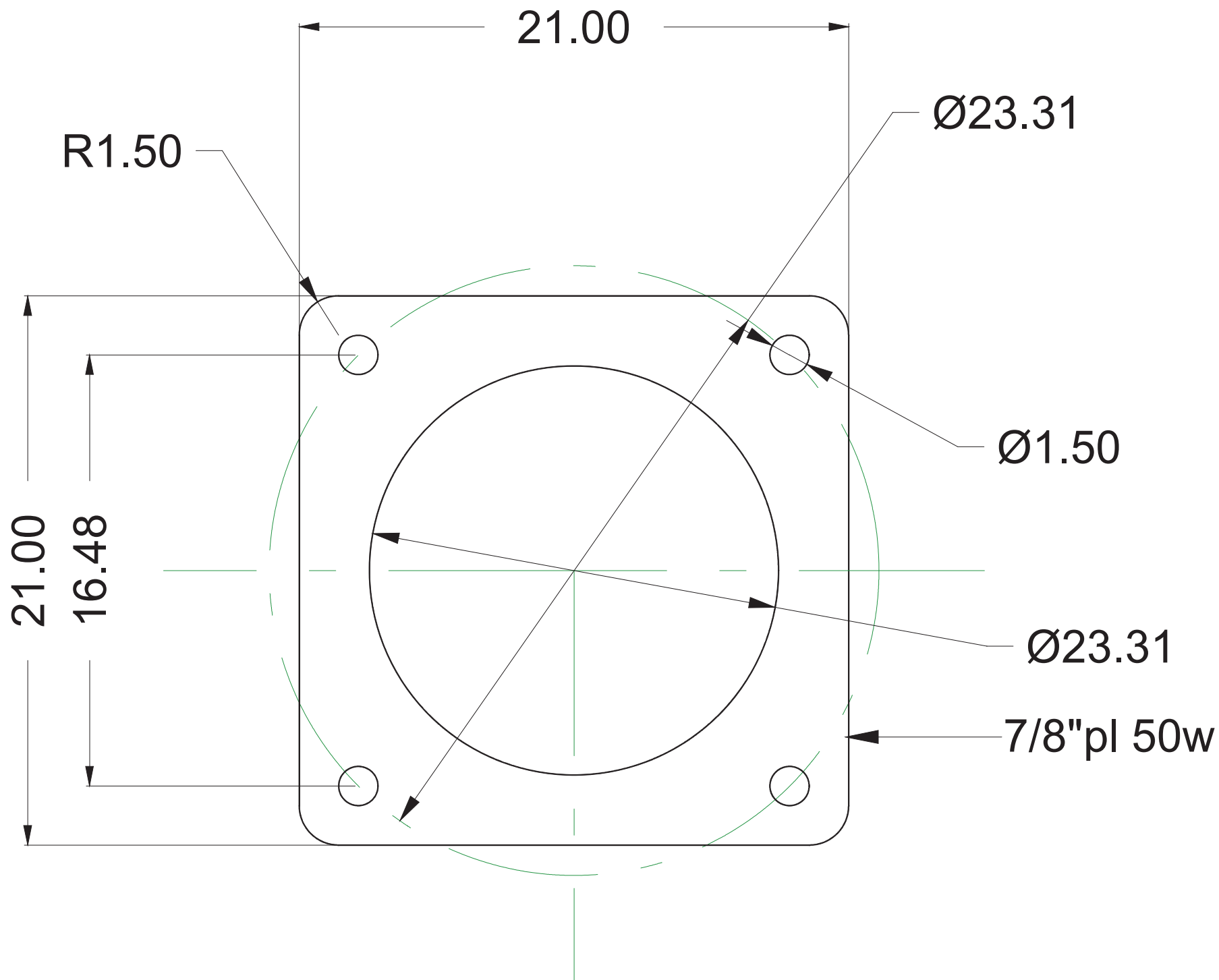


<b>PROPRIETARY AND CONFIDENTIAL</b> THE INFORMATION CONTAINED IN THIS DRAWING IS THE SOLE PROPERTY OF AMG METALS INC. ANY REPRODUCTION IN PART OR AS A WHOLE WITHOUT THE WRITTEN PERMISSION OF AMG METALS INC. IS PROHIBITED.	NAME	DATE	PROJECT TITLE:	
	DRAWN	VS	18/07/2019	Type 6 Anchor Assembly
	ENG APPR.	JP		
UNLESS OTHERWISE SPECIFIED: DIMENSIONS ARE IN MM. DO NOT SCALE DRAWING			TITLE: Anchor 4498CDx457Depth 1 1/4"-7 x 11 7/16" lg.	
 21 Bales Drive West Sharon (Newmarket) Ontario, Canada, L0G 1V0 Tel: 905-953-4111 Fax: 905-953-0844 www.amgmetals.com			CONTRACTOR:	
			SIZE	DWG. NO. 100005952
			SCALE:	WEIGHT:
			SHEET 1 OF 4	

PATH: C:\Users\Valeriu\Documents\2019\Anchor Shop Drawings\100005952\

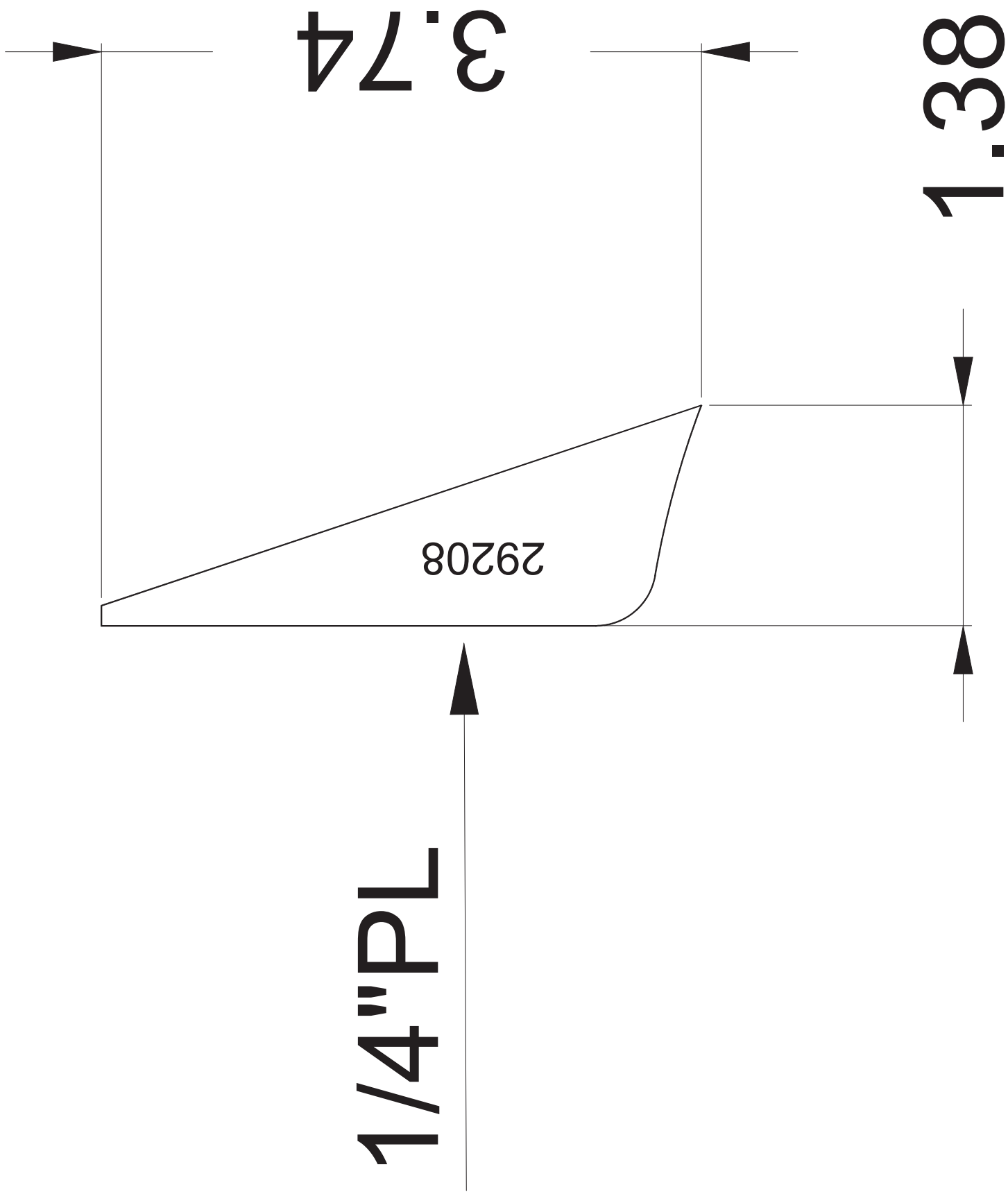


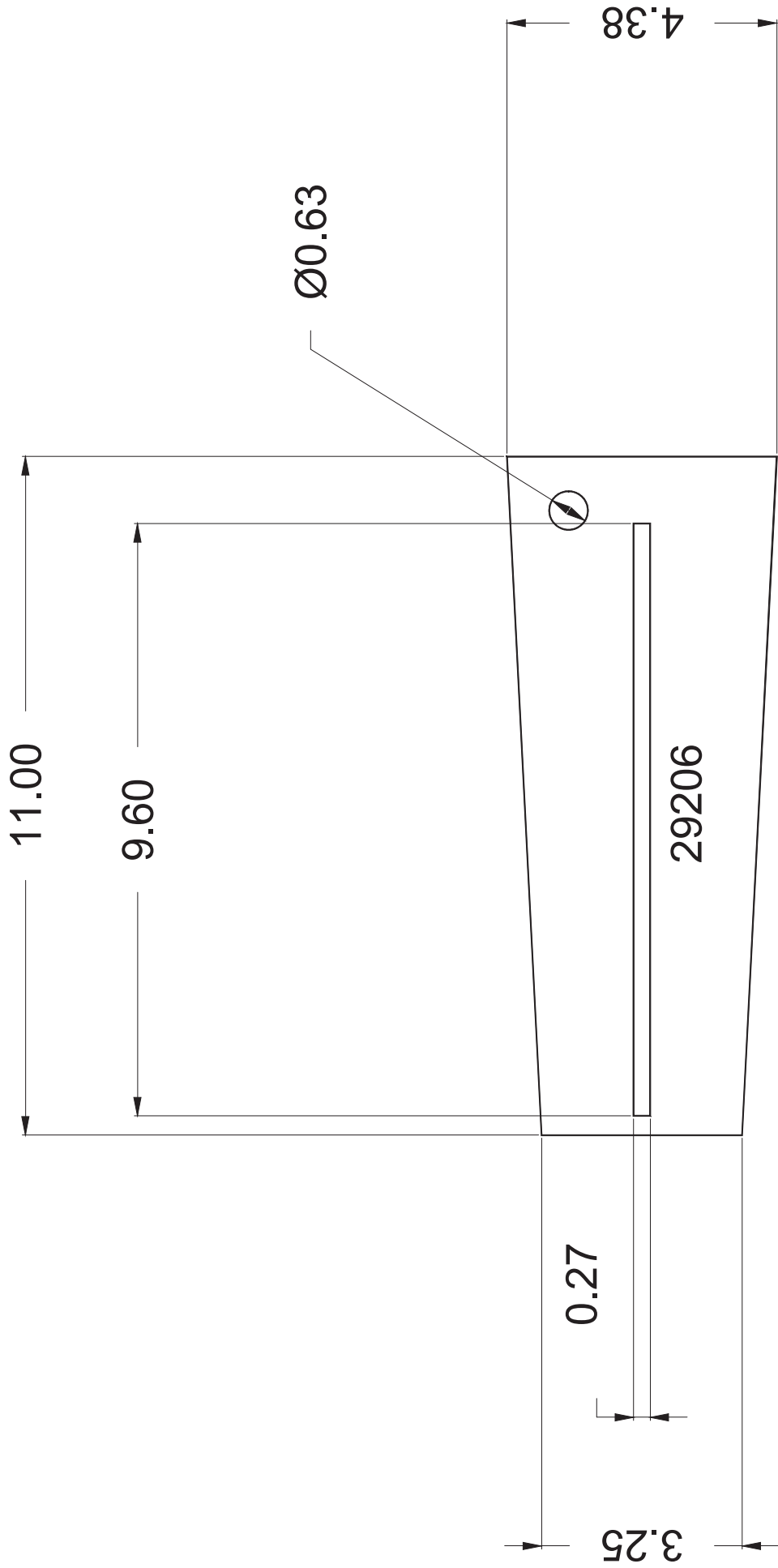
<b>PROPRIETARY AND CONFIDENTIAL</b>  THE INFORMATION CONTAINED IN THIS DRAWING IS THE SOLE PROPERTY OF AMG METALS INC. ANY REPRODUCTION IN PART OR AS A WHOLE WITHOUT THE WRITTEN PERMISSION OF AMG METALS INC. IS PROHIBITED.	NAME	DATE	PROJECT TITLE:	
	DRAWN	VS	18/07/2019	Type 6 Anchor Assembly
	ENG APPR.	JP		
	UNLESS OTHERWISE SPECIFIED: DIMENSIONS ARE IN MM DO NOT SCALE DRAWING			TITLE:
			Anchor Detail 1	
21 Bales Drive West Sharon (Newmarket) Ontario, Canada, L0G 1V0 Tel: 905-953-4111 Fax: 905-953-0844 www.amgmetals.com				
CONTRACTOR:				
SIZE DWG. NO.			REV	
100005952			0	
SCALE:		WEIGHT:		SHEET 2 OF 4

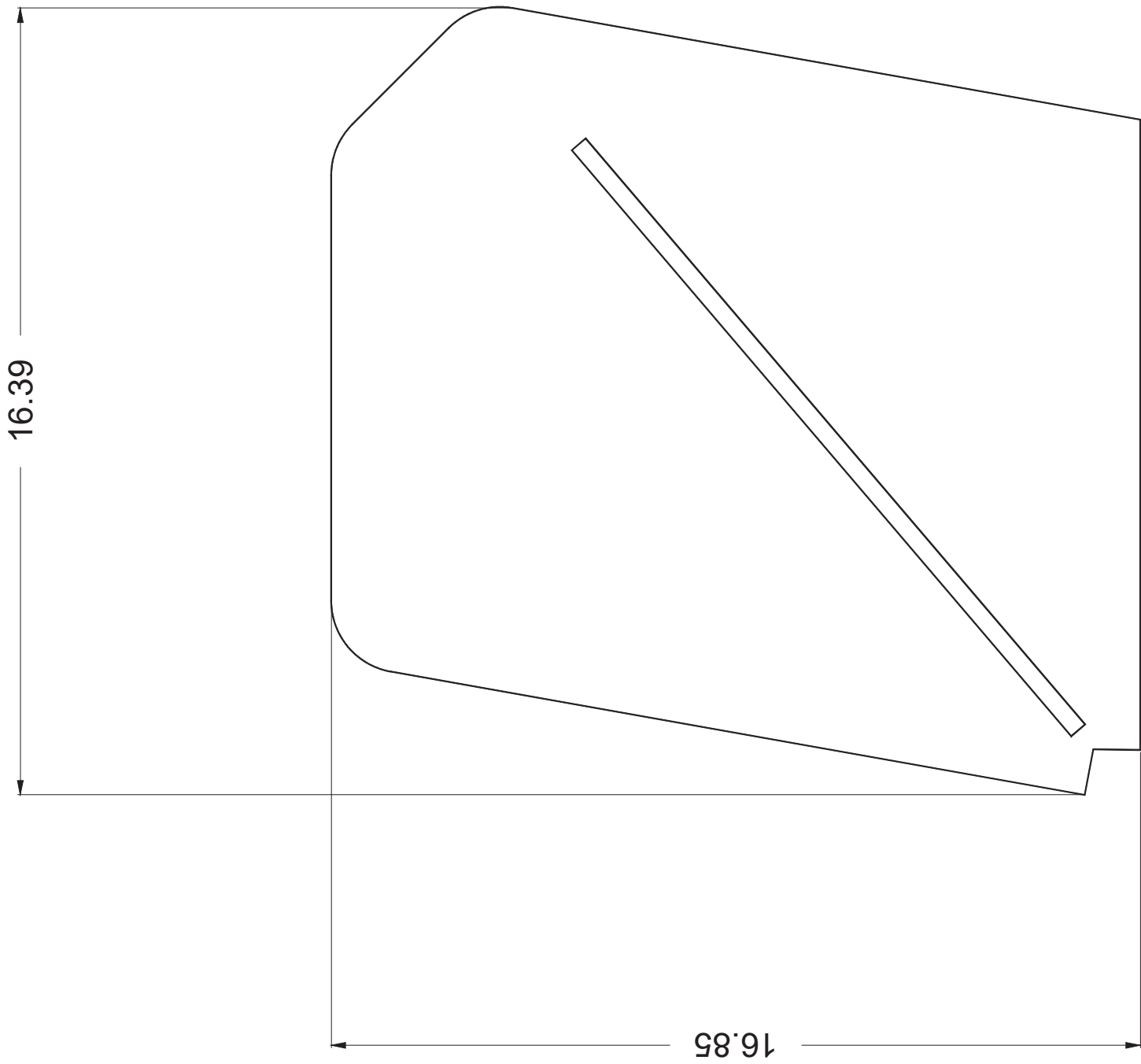


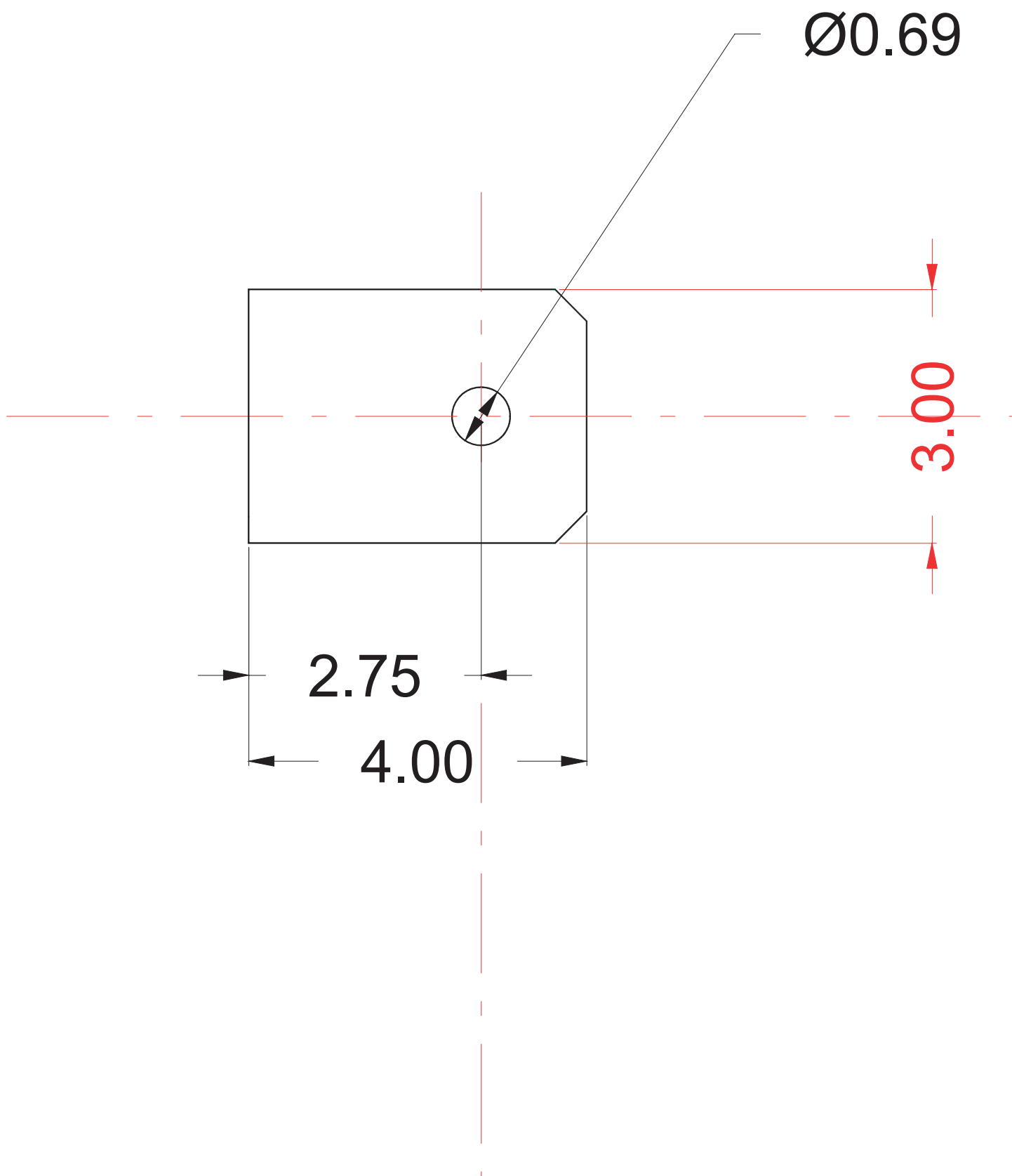


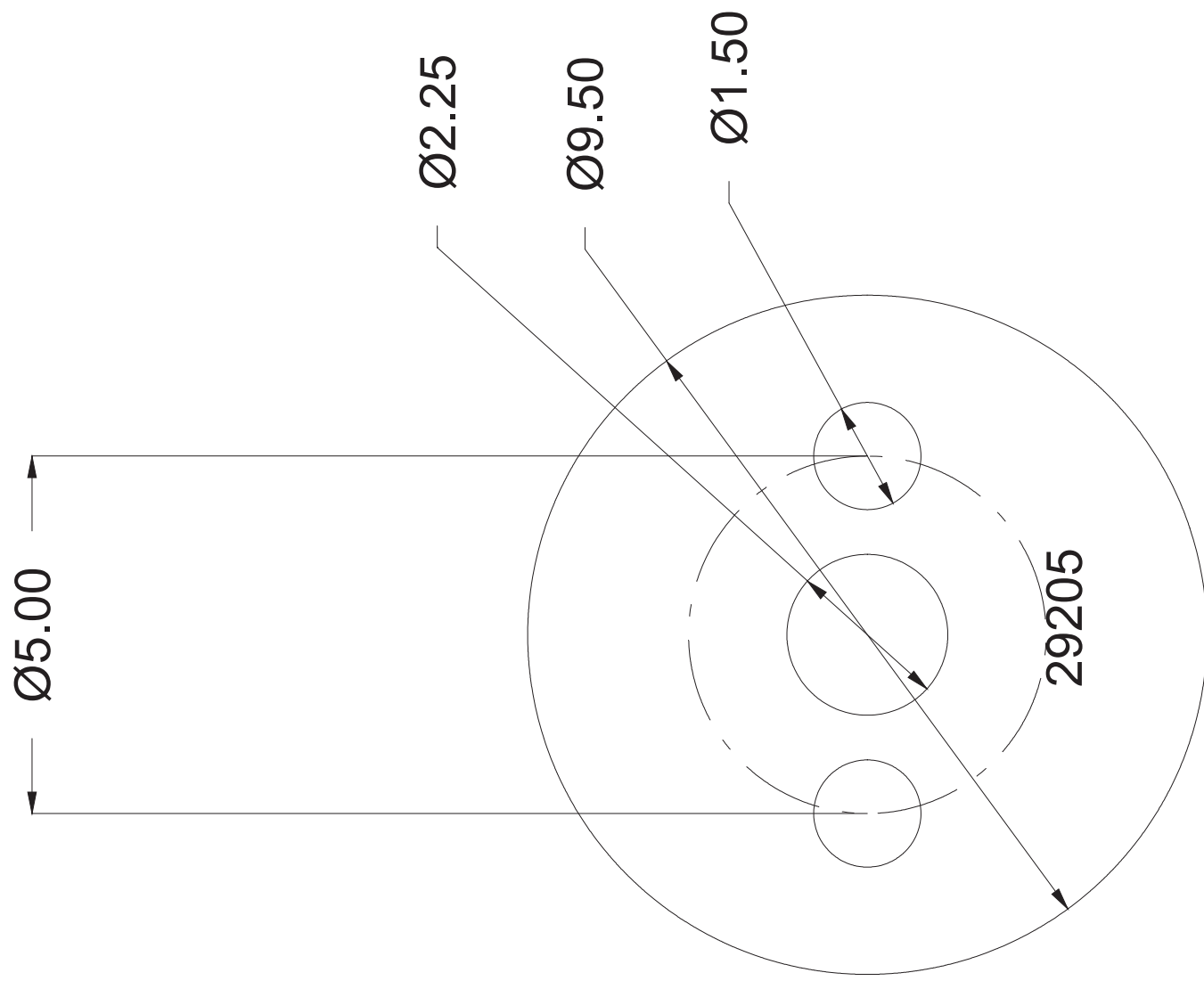


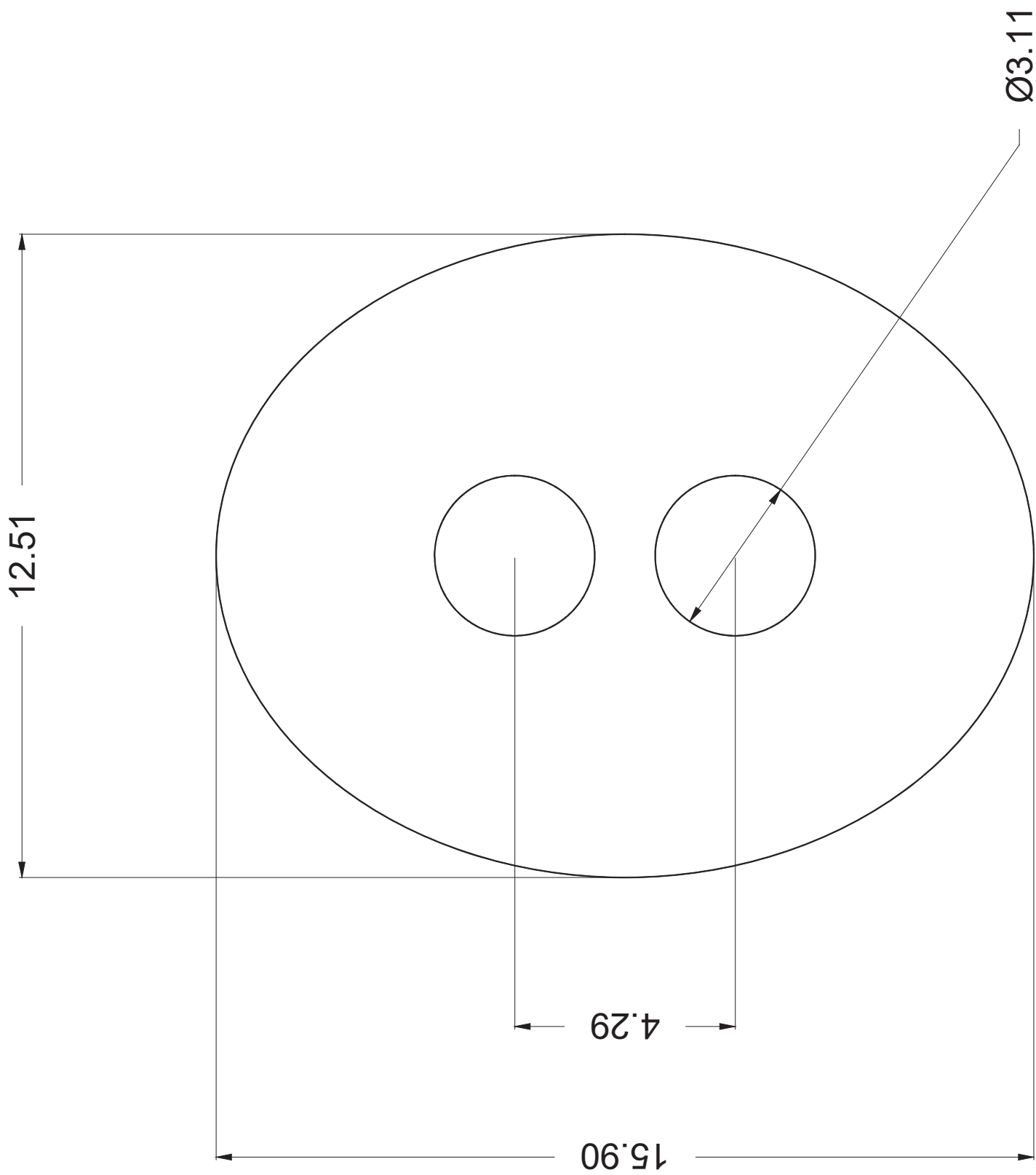






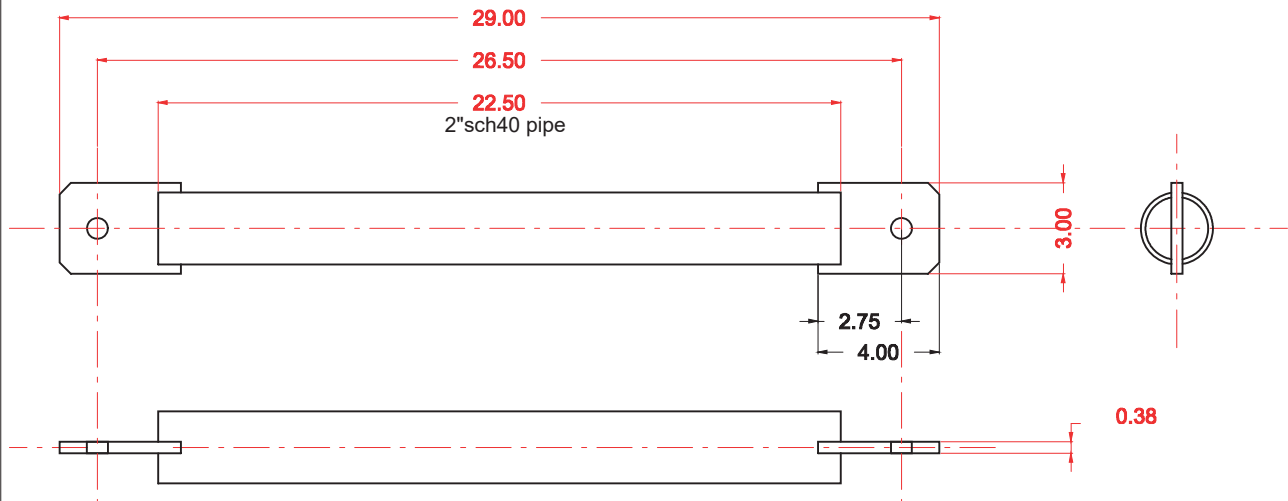









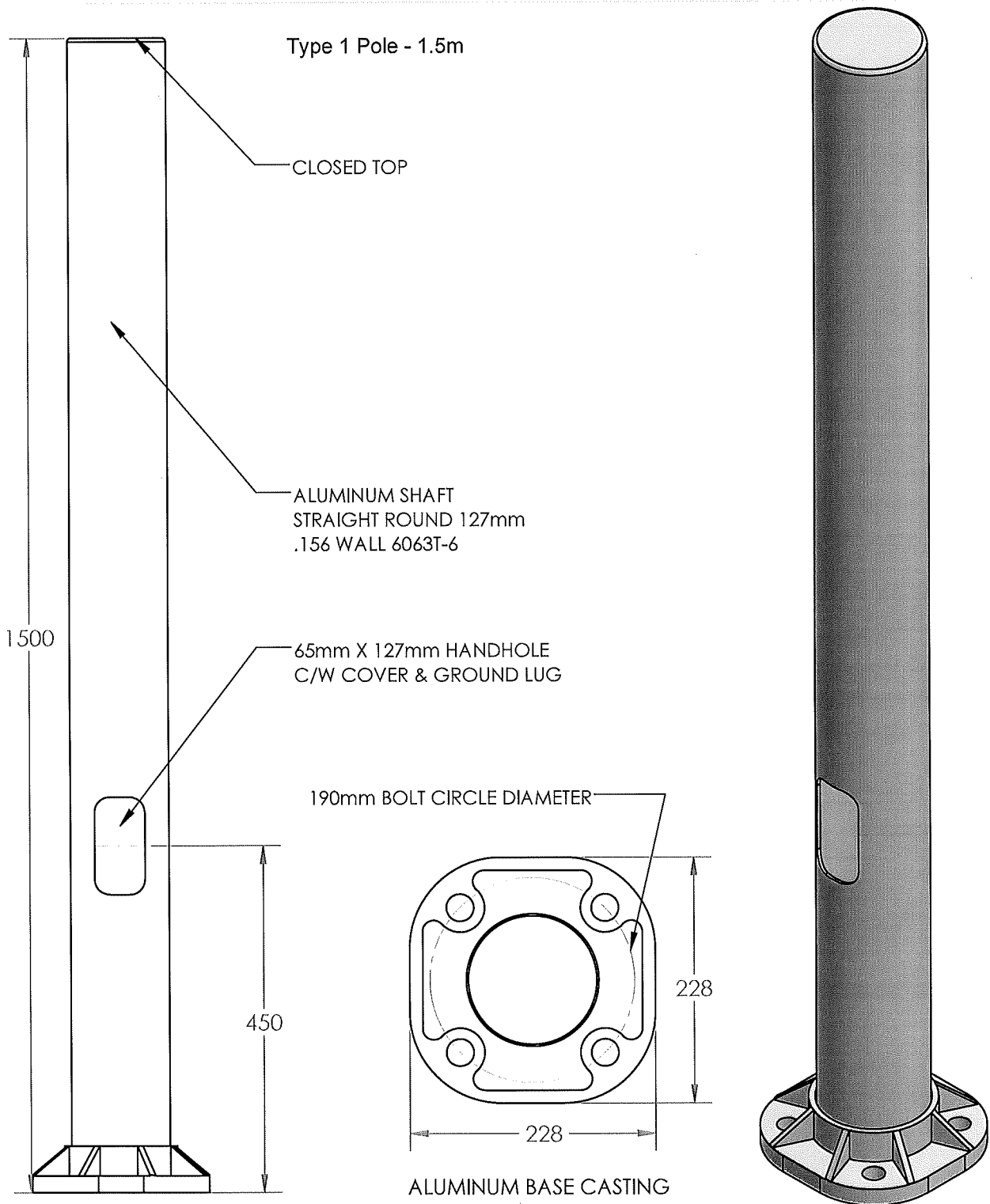


APPLICATION		REVISIONS			
NEXT ASSY.	USED ON	REV.	DESCRIPTION	DATE	APPROVED



PROJECT:  
QUANTITY:  
PO#  
CUSTOMER  
JOB #

UNLESS OTHERWISE SPECIFIED DIMENSIONS ARE IN INCHES. TOLERANCES ARE:  FRACTIONS    DECIMALS    ANGLES ± X"/X        .XX ± .XX        ± X ° .XXX ± .XXX	CONTRACT NO.				155 PONY DRIVE NEWMARKET, ON L3Y-7B5 905-836-2222 WWW.POLEFAB.COM SALES@POLEFAB.COM							
	APPROVALS		DATE		TITLE  51801 suppt bar							
	DRAWN		2014									
	CHECKED		JB									
MATERIAL					SIZE A		CODE		DWG. NO. 29203dwg		REV.	
FINISH												
					SCALE: XX:XX		WEIGHT		SHEET			



POLE HEIGHT: 5 ft / 1.5m

TAPER: 5 in / 127mm STRAIGHT ROUND

WALL THICKNESS: 0.156in / 3.95mm

BCD: 7.5in / 190mm

**PROPRIETARY AND CONFIDENTIAL**

THE INFORMATION CONTAINED IN THIS DRAWING IS THE SOLE PROPERTY OF SENTINEL POLE & TRAFFIC EQUIPMENT LIMITED. ANY REPRODUCTION IN PART OR AS A WHOLE WITHOUT THE WRITTEN PERMISSION OF SENTINEL POLE & TRAFFIC EQUIPMENT LIMITED IS PROHIBITED.

PART NAME: 5 ft (1.5M) PEDESTRIAN PUSH BUTTON POLE

PART #: PB5-550-AB190 OPSD 2558.000

SCALE: NTS

MATERIAL: ALUMINUM

UNITS: MILLIMETERS

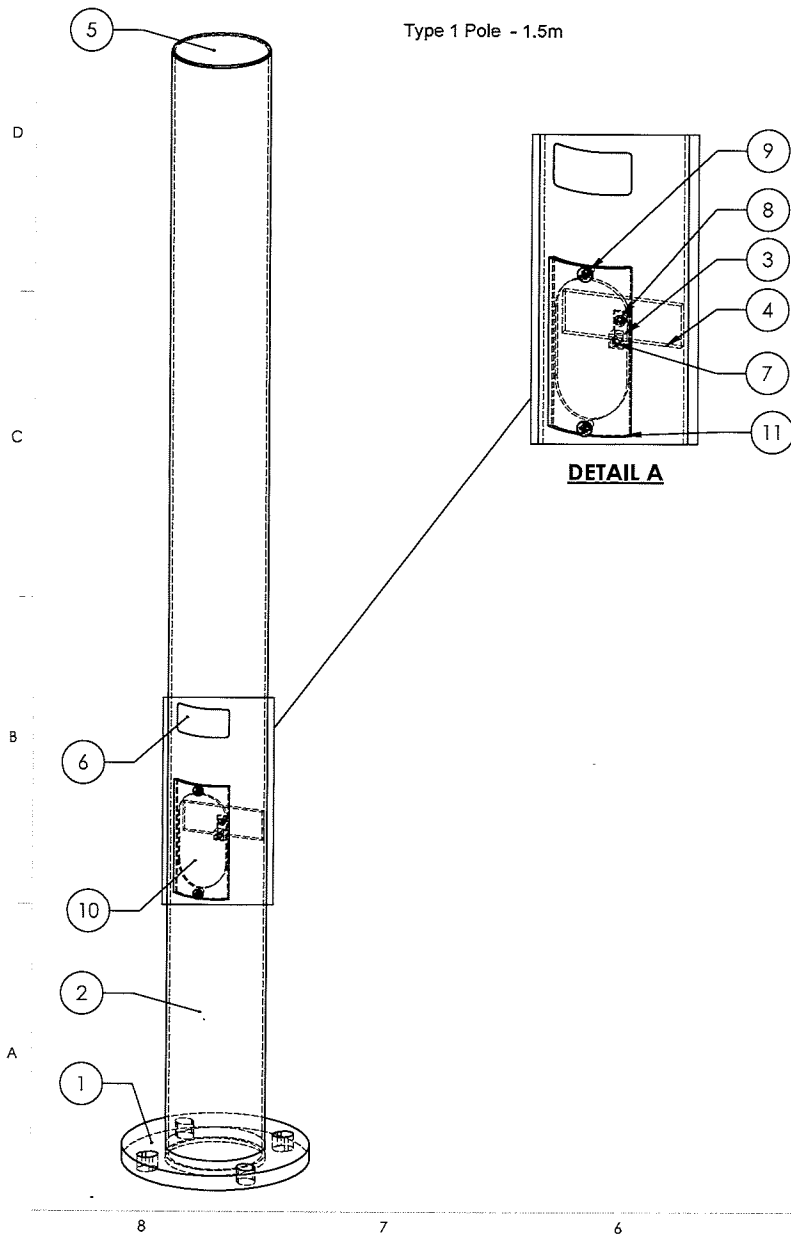
DATE: AUGUST 2016

**SENTINEL**

*Pole & Traffic Equipment Limited*

375 Admiral Blvd. Unit 3  
Mississauga, Ontario, L5T 2N1  
TEL: (905)-564-2929 / FAX (905)-564-0755  
www.sentineltraffic.com  
Info@sentineltraffic.com

Type 1 Pole - 1.5m



REV.	DESCRIPTION	DATE (DD/MM/YYYY)	APPROVED
1	ISSUED FOR REVIEW	28/10/2021	

GENERAL NOTES:

- DESIGN INFORMATION
  - DESIGN IN ACCORDANCE WITH CSA-S6-19 ANNEX A3.2
  - MAXIMUM REFERENCE WIND PRESSURE = 535 Pa
- ALUMINUM BASEPLATE SHALL CONFORM TO STANDARD ASTM B221 ALLOY 6063-T6 OR 6061-T6.
- ALUMINUM WELDING SHALL BE COMPLETED IN ACCORDANCE WITH CSA-W59.2 AND SHALL BE UNDERTAKEN BY FABRICATOR QUALIFIED IN ACCORDANCE WITH CWB W47.2.
- ALL DIMENSIONS ARE IN MILLIMETRES UNLESS OTHERWISE NOTED.

ITEM NO.	Description	Material	QTY.
1	Base Plate	6061-T6	1
2	Pole Shaft	6061-T6	1
3	Lug Connector - Burndy KA2U	AL	1
4	Ground Plate	6061-T6	1
5	End Cap Plate	6061-T6	1
6	Name Plate	Stainless Steel	1
7	Stud 1/4"	AL	1
8	Round Head Screw #10-24 x 1/2" Phillips Drive	Stainless Steel	1
9	Round Head Screw 1/4"-20 x 1/2" Phillips Drive	Stainless Steel	2
10	Hand Hole Cover	AL	1
11	Self Adhesive Gasket	Neoprene	1

<b>PROPRIETARY AND CONFIDENTIAL</b> THE INFORMATION CONTAINED IN THIS DRAWING IS THE SOLE PROPERTY OF POLEFAB INC. ANY REPRODUCTION IN PART OR AS A WHOLE WITHOUT THE WRITTEN PERMISSION OF POLEFAB INC. IS PROHIBITED.		NAME VS DATE 28/10/2021 CHECKED UNLESS OTHERWISE SPECIFIED: DIMENSIONS ARE IN mm DO NOT SCALE DRAWING	PROJECT TITLE: PEDESTRIAN POLE TITLE: 1.5m Push Button Pole General Arrangement
---	--	--	--



21 Bales Drive West  
Sharon, Ontario  
LOG-1V0  
844-216-7414  
www.polefab.com

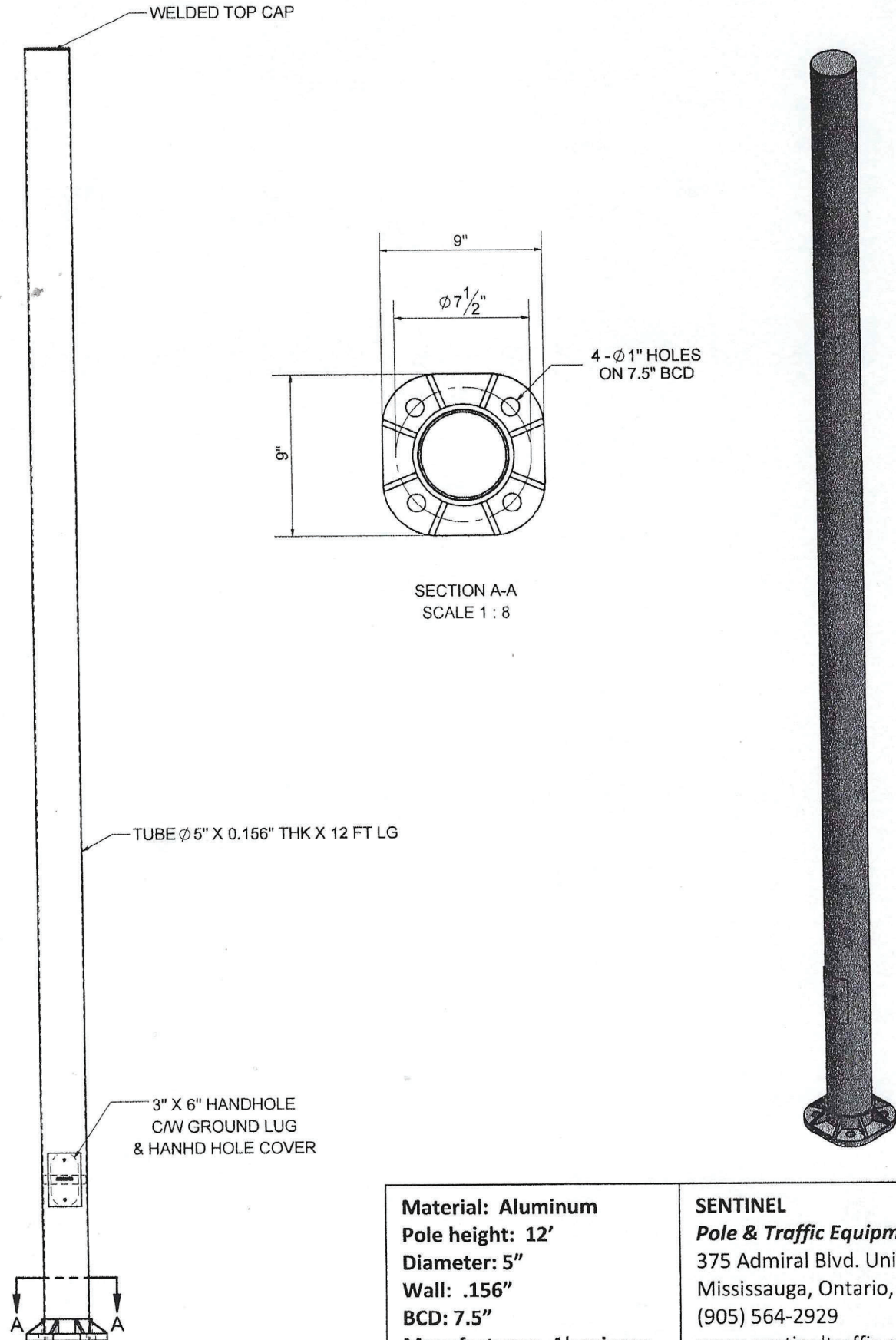
CONTRACTOR:  
CONTRACT NUMBER:

SIZE DWG. NO. PF-7505PB-AL REV 1

POLEFAB JOB#: SHEET 1 OF 2

Type 1 Pole - 3.66m

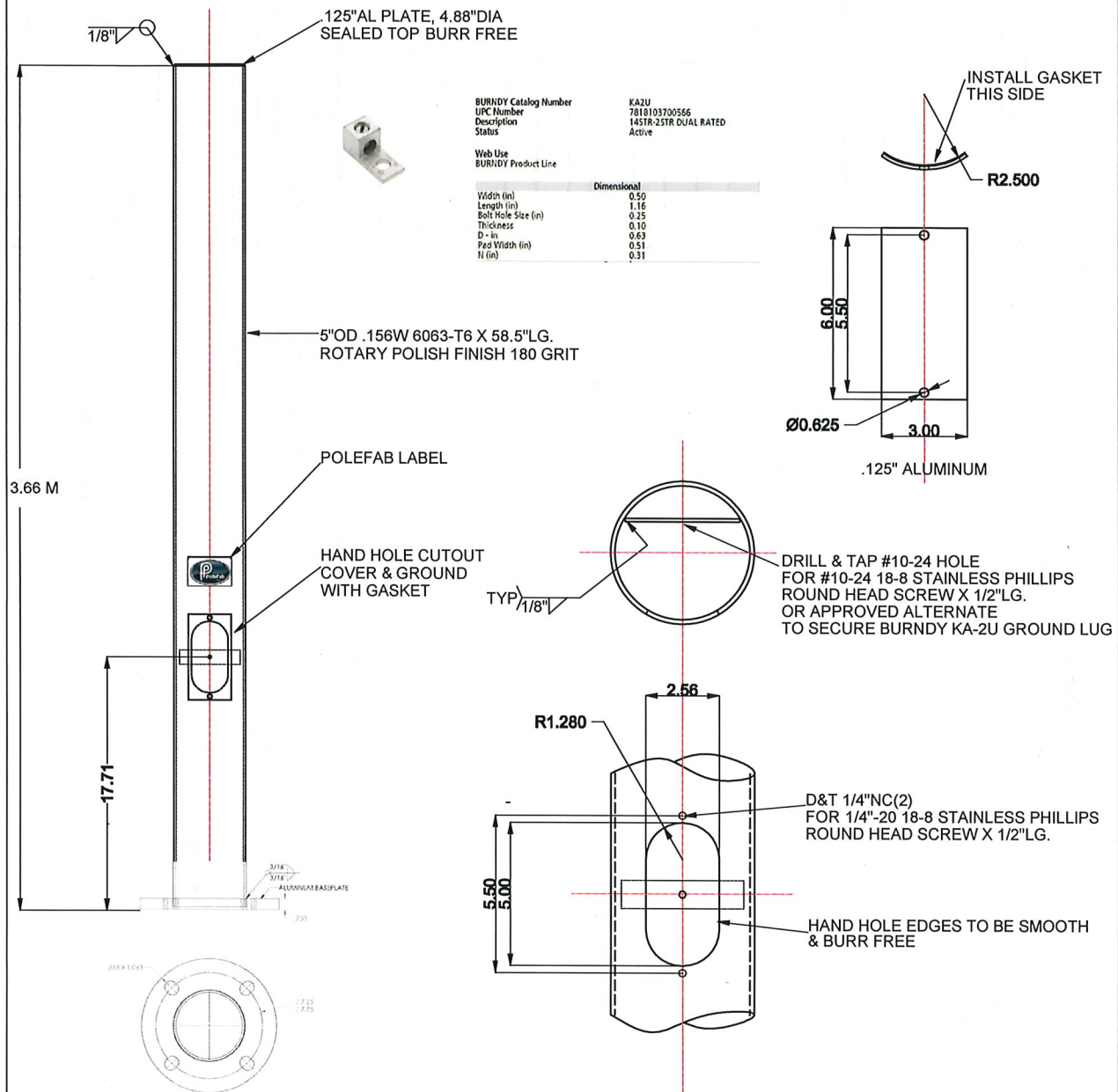
**12' x 5" STRAIGHT ROUND ALUMINUM POLE  
(SRAL5-12-AB190)**



**Material:** Aluminum  
**Pole height:** 12'  
**Diameter:** 5"  
**Wall:** .156"  
**BCD:** 7.5"  
**Manufacturer:** Aluminous

**SENTINEL**  
**Pole & Traffic Equipment Ltd.**  
375 Admiral Blvd. Unit 3  
Mississauga, Ontario, L5T 2N1  
(905) 564-2929  
[www.sentineltraffic.com](http://www.sentineltraffic.com)

APPLICATION		REVISIONS			
NEXT ASSY.	USED ON	REV.	DESCRIPTION	DATE	APPROVED
			Type 1 Pole - 3.66m		



UNLESS OTHERWISE SPECIFIED  
DIMENSIONS ARE IN INCHES.

THIS PRINT IS THE CONFIDENTIAL  
PROPERTY OF POLEFAB INC. AND IS  
LOANED SUBJECT TO RETURN UPON  
DEMAND AND UPON EXPRESS CONDITION  
THAT IT WILL NOT BE DISCLOSED TO ANY  
THIRD PARTY WITHOUT PRIOR WRITTEN  
PERMISSION OF POLEFAB INC. OR USED  
DIRECTLY OR INDIRECTLY IN ANY WAY TO  
POLEFAB INC.

#### MATERIAL

ALUMINUM

#### FINISH

ROTARY POLISH

#### APPROVALS

#### DATE

DRAWN

2017

CHECKED

JB



155 PONY DRIVE  
NEWMARKET, ON  
L3Y-7B5  
905-836-2222  
WWW.POLEFAB.COM  
SALES@POLEFAB.COM



#### TITLE

**PF-7512PB-AL**  
**(3.66 M) Ped Pole**

#### SIZE

#### CODE

#### DWG. NO.

#### REV.

A

ALUM PB

#### SCALE: NTS

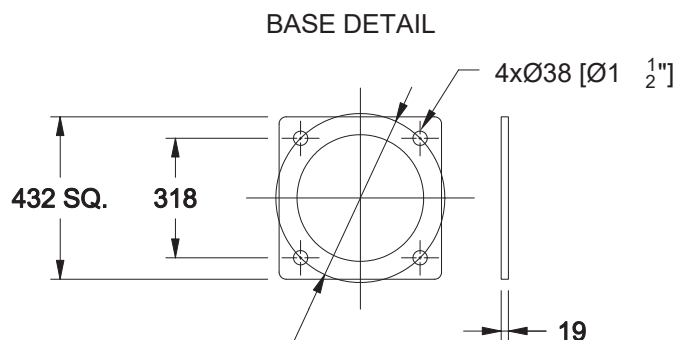
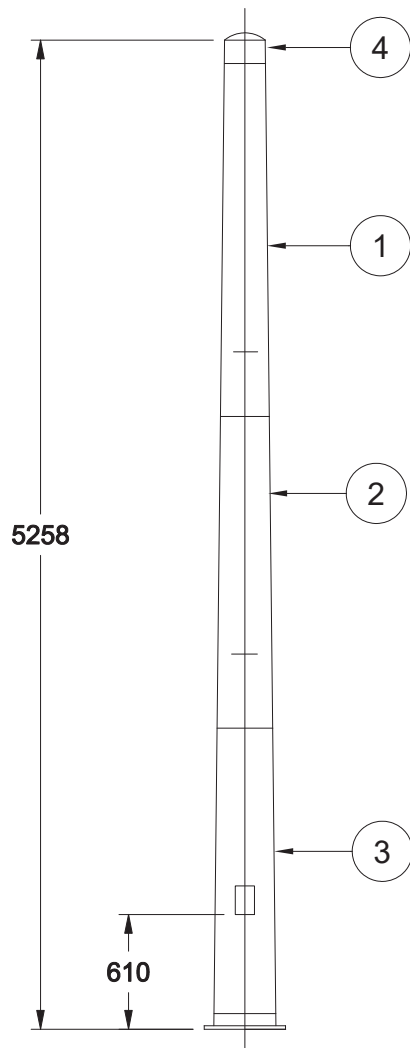
#### WEIGHT

#### SHEET

ITEM	DWG NO.	PART NO.	DESCRIPTION	QTY
1	A50574	40W	STD NO.4 SECTION	1
2	A50575	50W	STD NO.5 SECTION	1
3	C50616 SHT 1	61WB	NO.6 SECTION <sup>C<sub>w</sub></sup> BASE & 102mm(4")x152mm(6") H.H.	1
4	B51249	134W	NO.4 POLE CAP	1

Type 3 Pole - 5.26m

PoleFab Part No.:  
PF13C49B-GA/AS



## NOTES

- ALL DIMENSIONS ARE IN MILLIMETRES
- MATERIAL: STEEL - 50 KSI MIN. YIELD
- FINISH: HOT DIP GALV. AS PER CSA G164
- STENCIL ALL OVERLAPS

## REVISION

## BY

## DATE

## REFERENCE

THIS DRAWING IS THE PROPERTY OF POLEFAB INC. AND EMBODIES A CONFIDENTIAL PROPRIETARY DESIGN IN WHICH POLEFAB INC. RETAINS ALL PATENTS AND PROPRIETARY RIGHTS, INCLUDING EXCLUSIVE RIGHT TO MANUFACTURE AND SALE. BY ACCEPTING THIS DRAWING, THE RECIPIENT AGREES NOT TO DISCLOSE, REPRODUCE OR USE ANY INFORMATION CONTAINED HEREIN WITHOUT THE PRIOR WRITTEN CONSENT OF POLEFAB INC.

DRAWN BY: M. CHEN

DATE: MAY 21 2008

CHECKED BY:

DATE:

APPROVED BY:

DATE:

Polefab inc.

MANUFACTURERS OF SECTIONAL  
STEEL POLES & PRODUCTS

BASE MOUNTED STRAIGHT  
SHAFT POLE - 17'-3" LG

CAT./PART NO. SS46B

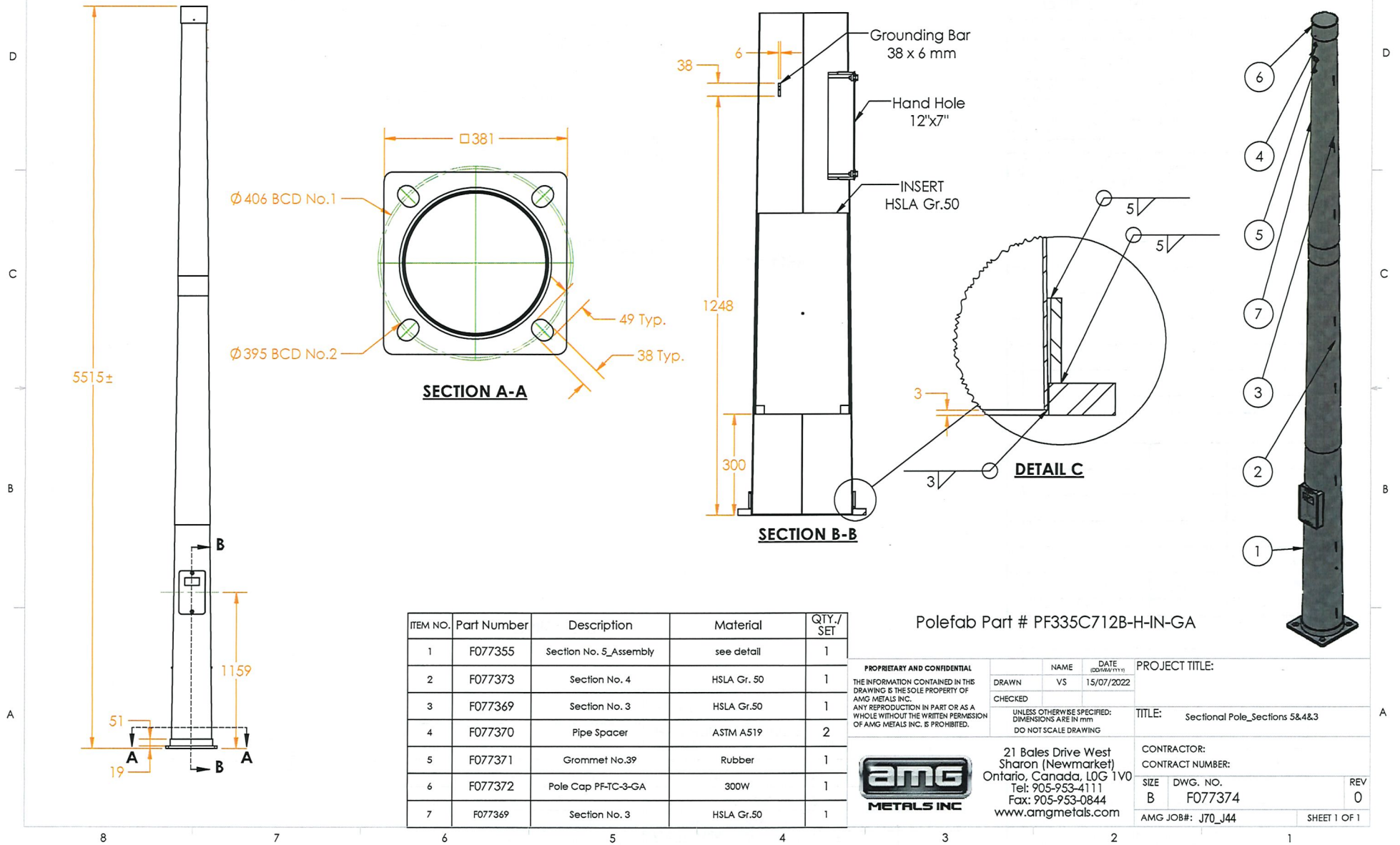
DWG. NO. SS46B

REV. 0



Type 5 Pole - 5.52m

REV.	DESCRIPTION	DATE (DD/MM/YYYY)	APPROVED
0	ISSUED FOR REVIEW	15/07/2022	



ITEM NO.	Part Number	Description	Material	QTY./SET
1	F077355	Section No. 5_Assembly	see detail	1
2	F077373	Section No. 4	HSLA Gr. 50	1
3	F077369	Section No. 3	HSLA Gr.50	1
4	F077370	Pipe Spacer	ASTM A519	2
5	F077371	Grommet No.39	Rubber	1
6	F077372	Pole Cap PF-TC-3-GA	300W	1
7	F077369	Section No. 3	HSLA Gr.50	1

Polefab Part # PF335C712B-H-IN-GA

PROPRIETARY AND CONFIDENTIAL  
 THE INFORMATION CONTAINED IN THIS  
 DRAWING IS THE SOLE PROPERTY OF  
 AMG METALS INC.  
 ANY REPRODUCTION IN PART OR AS A  
 WHOLE WITHOUT THE WRITTEN PERMISSION  
 OF AMG METALS INC. IS PROHIBITED.



21 Bales Drive West  
 Sharon (Newmarket)  
 Ontario, Canada, L0G 1V0  
 Tel: 905-953-4111  
 Fax: 905-953-0844  
 www.amgmetals.com

NAME VS	DATE 15/07/2022	PROJECT TITLE:
CHECKED	UNLESS OTHERWISE SPECIFIED: DIMENSIONS ARE IN mm DO NOT SCALE DRAWING	TITLE: Sectional Pole_Sections 5&4&3
CONTRACTOR:	CONTRACT NUMBER:	REV 0
SIZE B	DWG. NO. F077374	AMG JOB#: J70_J44
		SHEET 1 OF 1

ITEM	DWG NO.	PART NO.	DESCRIPTION	QTY.
1	A51725-10	A51725-10	NO.1 SECTION $C_W$ 19mm( $\frac{3}{4}$ ") IPS. PIPESPACER & NO.39 GROMMET	1
2	A50572	20W	NO.2 SECTION 2000 mm LG.	1
3	A50573	30W	NO.3 SECTION 2000 mm LG.	1
4	A50574	40W	NO.4 SECTION 2000 mm LG.	1
5	B50616 SHT 1	51WB	NO.51WB $C_W$ 102mm(4")x152mm(6") HANDHOLE AND BASE PLATE	1
6	B50191	131W	NO.1 POLE CAP	1

# NOTES

- ALL DIMENSIONS ARE IN MILLIMETRES
- FINISH: HOT DIP GALV. AS PER CSA G164
- STENCIL ALL OVERLAPS
- MATERIAL: STEEL - 50 KSI MIN. YIELD

REVISION	BY	DATE
0	NEW DRAWING	G.BARBUC 18 DEC 2006
1	REDRAWN	M. CHEN 20 MAY 2008

# REFERENCE

THIS DRAWING IS THE PROPERTY OF POLEFAB INC. AND EMBODIES A CONFIDENTIAL PROPRIETARY DESIGN IN WHICH POLEFAB INC. RETAINS ALL PATENTS AND PROPRIETARY RIGHTS, INCLUDING EXCLUSIVE RIGHT TO MANUFACTURE AND SALE. BY ACCEPTING THIS DRAWING, THE RECIPIENT AGREES NOT TO DISCLOSE, REPRODUCE OR USE ANY INFORMATION CONTAINED HEREIN WITHOUT THE PRIOR WRITTEN CONSENT OF POLEFAB INC.

DRAWN BY: G.BARBUC  
DATE: DEC. 18 2006  
CHECKED BY: M.KEARNS  
DATE: DEC. 18 2006  
APPROVED BY: G. LEE  
DATE: DEC. 18 2006

Polefab inc. MANUFACTURERS OF SECTIONAL STEEL POLES & PRODUCTS

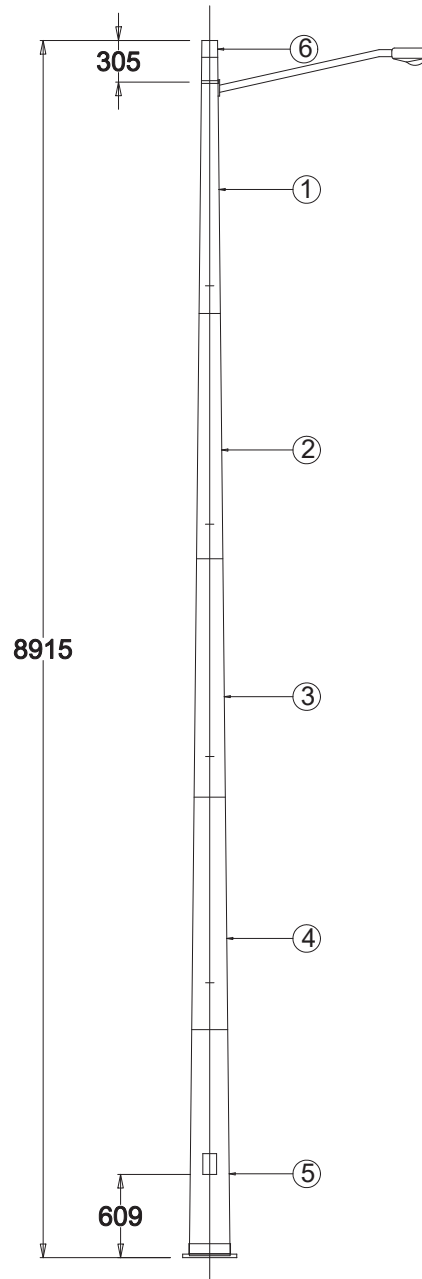
BASE MOUNTED SECTIONAL POLE -  
8.9M (29'-3")

CAT./PART NO. TB15B

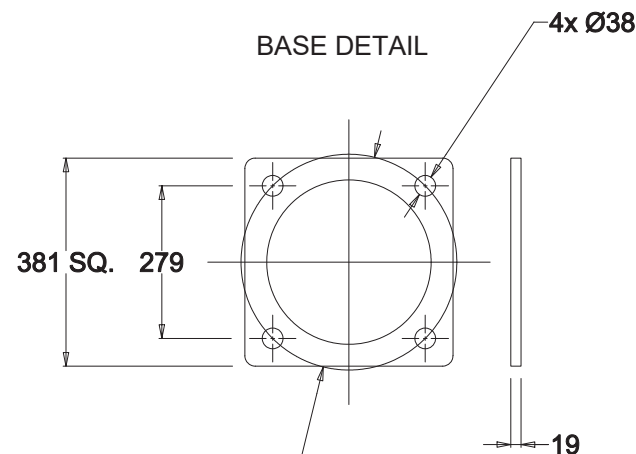
DWG. NO. TB15B

REV. 1

Type 5 Pole - 8.92m

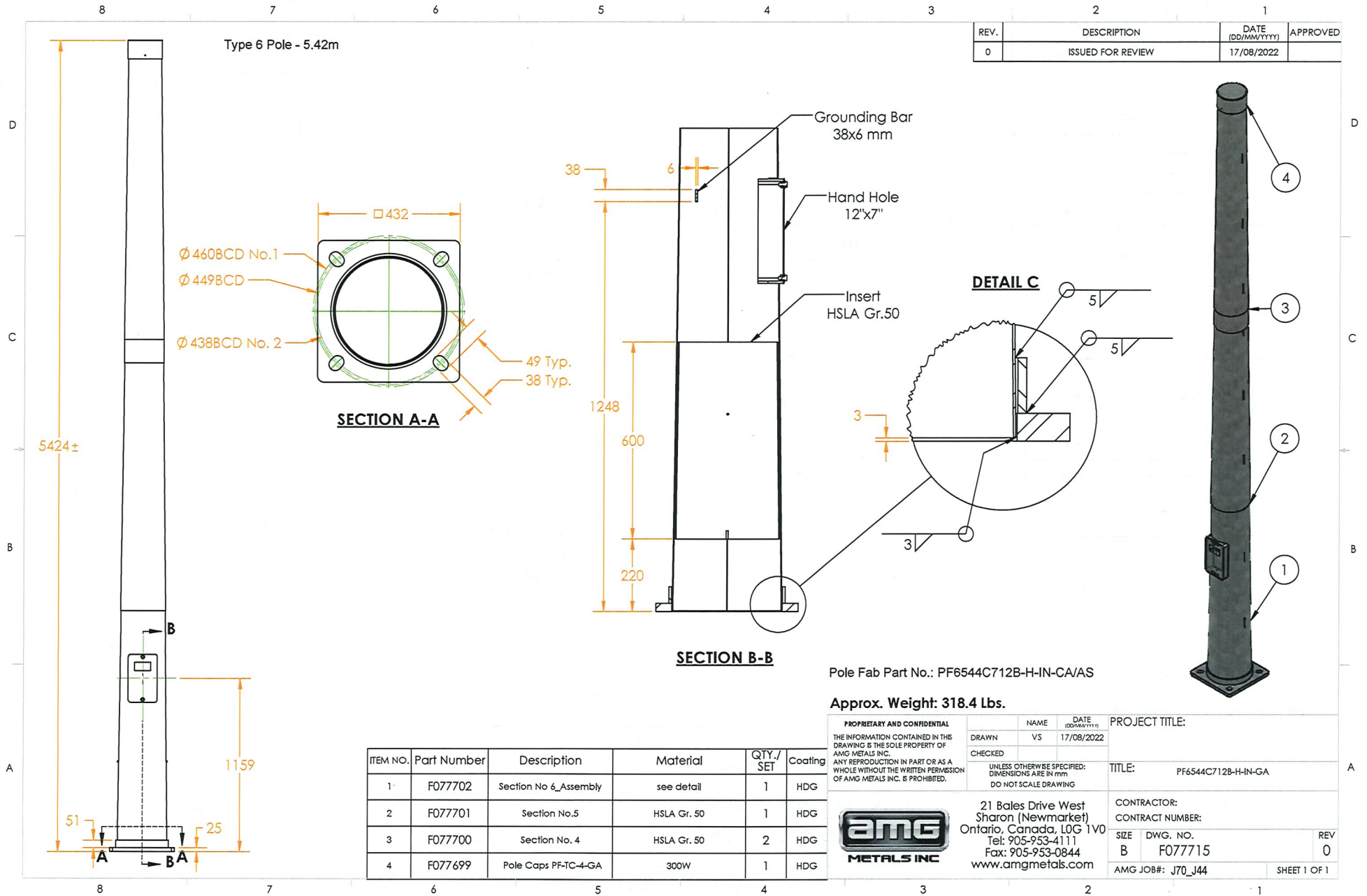


BASE DETAIL

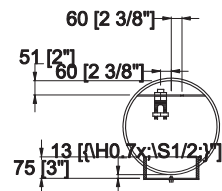
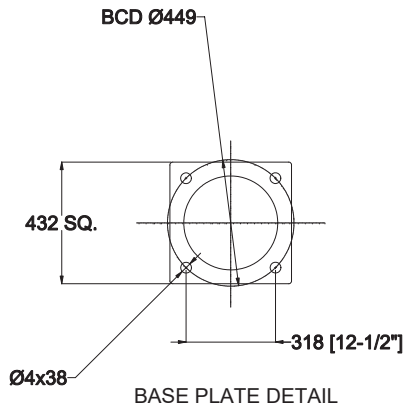
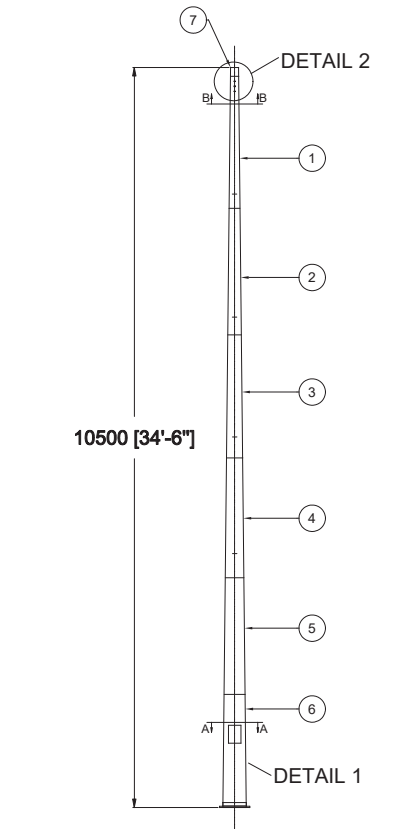


B.C.D. Ø395

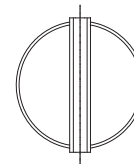
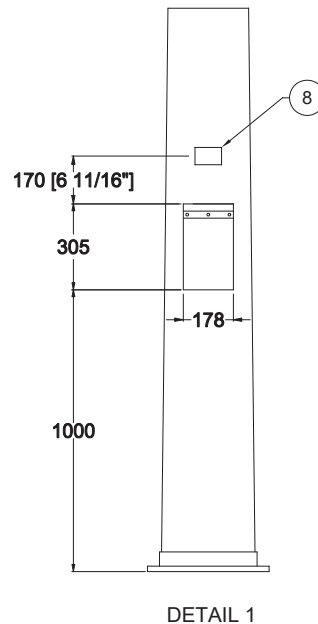
Polefab Part PF15C712B-H-IN-GA



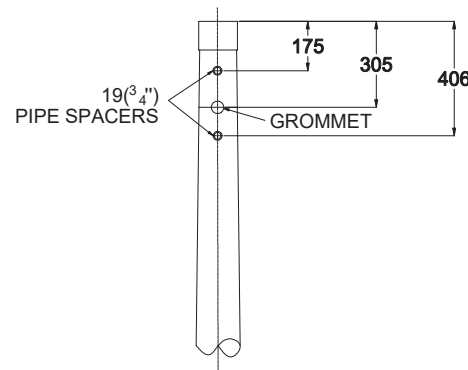
# Type 6 Pole - 10.5m



SECTION A-A



SECTION B-B



DETAIL 2

ITEM	DWG NO.	PART NO.	DESCRIPTION	QTY.
1	B52139TAB	B52139-1	NO. 1 SECT. C/W 2 19mm (3/4") IPS. PIPE SPACERS & NO.39 GROMMET	1
2	A50572	20W	NO. 2 SECTION 2000mm(78-3/4") LG.	1
3	A50573	30W	NO. 3 SECTION 2000mm(78-3/4") LG.	1
4	A50574	40W	NO. 4 SECTION 2000mm(78-3/4") LG.	1
5	A50575	50W	NO. 5 SECTION 2000mm(78-3/4") LG.	1
6	B52142	B52142	NO. 6 BASE SECTION & 178mm(7") x 305mm(12") H.H. AS PER B52098	1
7	B50191	131W	PF-TC-1-GA Top Cap	1
8	B51780	B51780-10	NAME PLATE	1

## NOTES

1	ALL DIMENSIONS ARE IN MILLIMETRES
2	MATERIAL: STEEL - 50 KSI MIN. YIELD
3	FINISH: HOT DIP GALV. AS PER CAN/CSA-G164
4	STENCIL ALL OVERLAPS
5	COLOUR CODE WHEN NECESSARY

REVISION	BY	DATE
9	REDRAWN & NOTES UPDATED HAND HOLE, LABEL & GEN. DIMS. UPDATED	D. MORRA 6 MAY 2009

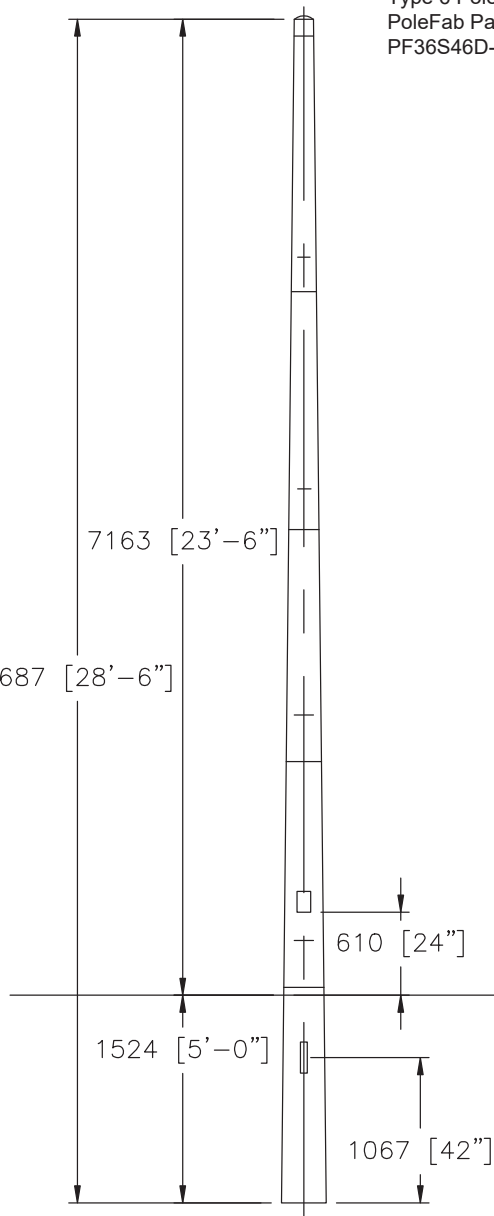
## REFERENCE

1	Manufactured in Accordance with the Ontario Provincial Standard Specification (OPSS) for Material Specifications: Sectional Steel Class Poles listed under MTO Spec. OPSS 2453.
---	---

Polefab Part PF16C712B-H-2P-IN-GA/

THIS DRAWING IS THE PROPERTY OF POLEFAB INC. AND EMBODIES A CONFIDENTIAL PROPRIETARY DESIGN IN WHICH POLEFAB INC. RETAINS ALL PATENTS AND PROPRIETARY RIGHTS, INCLUDING EXCLUSIVE RIGHT TO MANUFACTURE AND SALE. BY ACCEPTING THIS DRAWING, THE RECIPIENT AGREES NOT TO DISCLOSE, REPRODUCE OR USE ANY INFORMATION CONTAINED HEREIN WITHOUT THE PRIOR WRITTEN CONSENT OF POLEFAB INC.

DRAWN BY:	Donato Morra
DATE:	MAY. 6 2009
CHECKED BY:	MIKE KEARNS
DATE:	MAY 23, 2009
APPROVED BY:	GEORGE LEE
DATE:	JUNE 18, 2009
Polefab inc. MANUFACTURERS OF SECTIONAL STEEL POLES & PRODUCTS	
10.5m (34'-6") BASE MOUNTED POLE C/W 178mm(7") x 305mm(12") HAND HOLE	
CAT./PART NO.	C51980
DWG. NO.	B51980
REV.	9



Type 6 Pole - 7.0m  
PoleFab Part No.:  
PF36S46D-GA/AS

FOR A51742-1 REMOVE SECTIONS  
NO.2 & NO.3 AND ADD A NO.4 CAP  
- POLE LENGTH 5.26m(17'-3")

FOR A51742-2 REMOVE SECTIONS  
NO.2 AND ADD A NO.3 CAP  
- POLE LENGTH 7.0m(22'-10<sup>1</sup>/<sub>4</sub>")

NOTES	
1	ALL DIMENSIONS ARE IN MILLIMETRES
2	MATERIAL: STEEL
3	FINISH: HOT DIP GALV.
4	STENCIL ALL OVERLAPS
5	COLOUR CODE WHEN NECESSARY

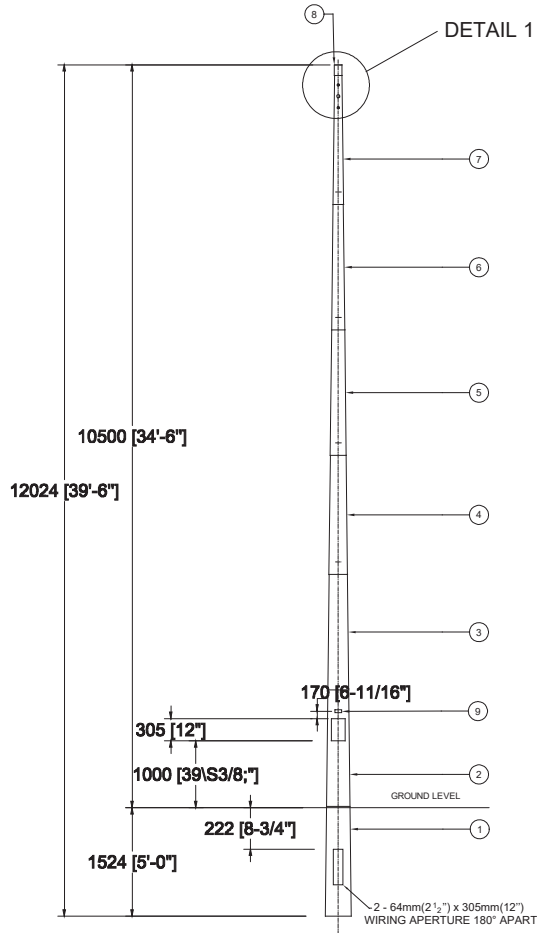
REVISION	BY	DATE

REFERENCE	

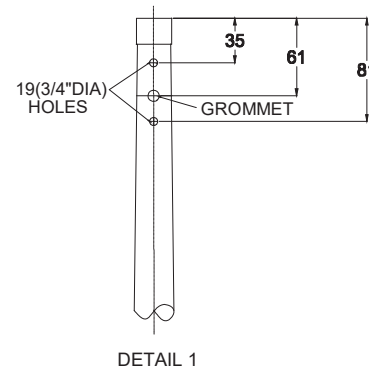
THIS DRAWING IS THE PROPERTY OF POLEFAB INC. AND ENJOYS A CONFIDENTIAL PROPRIETARY DESIGN IN WHICH POLEFAB INC. RETAINS ALL PATENTS AND PROPRIETARY RIGHTS, INCLUDING EXCLUSIVE RIGHT TO MANUFACTURE AND SALE. BY ACCEPTING THIS DRAWING, THE RECIPIENT AGREES NOT TO DISCLOSE, REPRODUCE OR USE ANY INFORMATION CONTAINED HEREIN WITHOUT THE PRIOR WRITTEN CONSENT OF POLEFAB INC.

DRAWN BY:	
DATE:	
CHECKED BY:	
DATE:	
APPROVED BY:	
DATE:	
<b>Polefab Inc.</b> MANUFACTURERS OF SECTIONAL STEEL POLES & PRODUCTS	
5.7m(28'-6") DIRECT BURIED POLE CW 102mm(4") x 182mm(8") HAND HOLE & 51mm(2") x 228mm(9") APERTURE	
CAT./PART NO. GENERAL DETAIL DRAWING	
DWG. NO.	REV.
A51742 TAB	

# Type 7 Pole =- 12.0m



ITEM	PART NO.	DESCRIPTION	QTY.
1	A52158-0	NO. 7 SECTION C/W 2 WIRING APERTURES 64mm(2 1/2") x 305mm(12")	1
2	A52140-1	NO. 6 SECTION C/W 178mm(7") x 305mm(12")	1
3	50W	NO. 5 SECTION	1
4	40W	NO. 4 SECTION	1
5	30W	NO. 3 SECTION	1
6	20W	NO. 2 SECTION	1
7	B52139-1	NO.1 SECT. C/W PIPESPACERS & GROMMET	1
8	131W	NO. 1 POLE CAP	1
9	B51780-14	NAME PLATE	1




NOTES	
1	ALL DIMENSIONS ARE IN MILLIMETRES UNLESS OTHERWISE NOTED
2	MATERIAL: STEEL
3	FINISH: HOT DIP GALV.
4	STENCIL ALL OVERLAPS
5	COLOUR CODE WHEN NECESSARY

REVISION	BY	DATE

REFERENCE

THIS DRAWING IS THE PROPERTY OF POLEFAB INC. AND EMBODIES A CONFIDENTIAL, PROPRIETARY DESIGN IN WHICH POLEFAB INC. RETAINS ALL PATENTS AND PROPRIETARY RIGHTS, INCLUDING EXCLUSIVE RIGHT TO MANUFACTURE AND SALE. BY ACCEPTING THIS DRAWING, THE RECIPIENT AGREES NOT TO DISCLOSE, REPRODUCE OR USE ANY INFORMATION CONTAINED HEREIN WITHOUT THE PRIOR WRITTEN CONSENT OF POLEFAB INC.

DRAWN BY:	
DATE:	
CHECKED BY:	
DATE:	
APPROVED BY:	
DATE:	
<b>Polefab inc.</b> MANUFACTURERS OF SECTIONAL STEEL POLES & PRODUCTS	
12.0m(39'-6") DIRECT BURIED POLE C/W 178mm(7") x 305mm(12") HAND HOLE	
CAT./PART NO. C51983	
DWG. NO. B51983	REV.

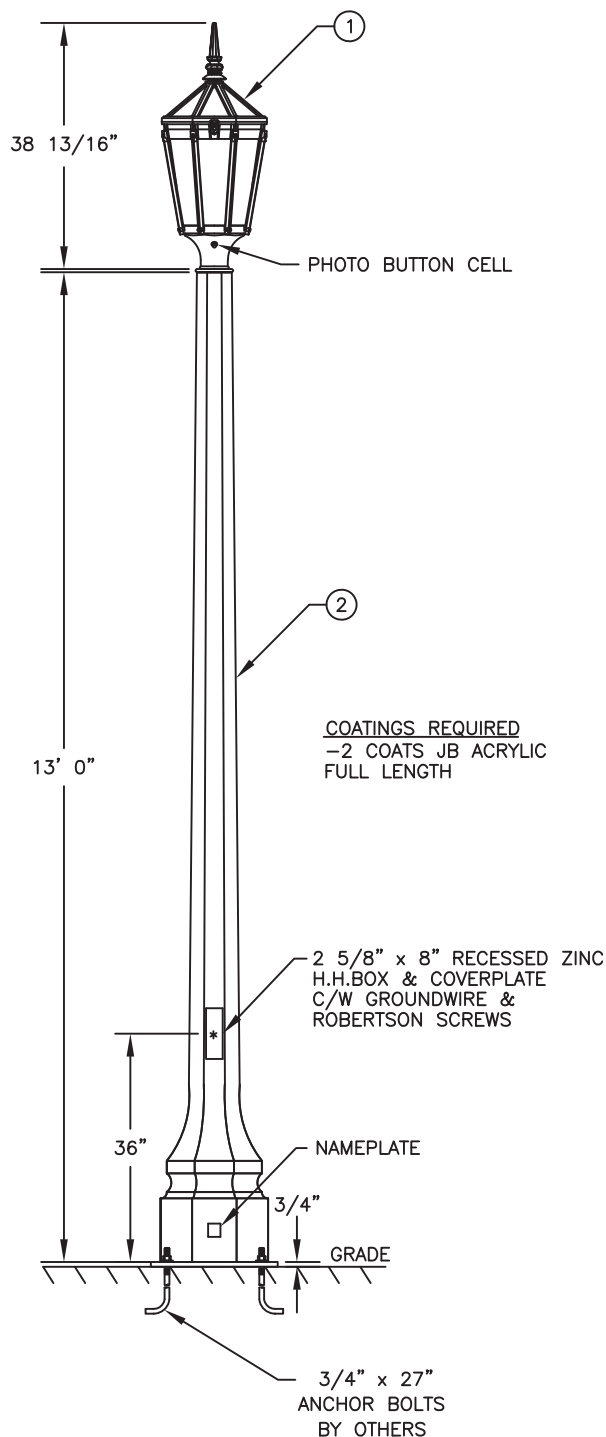


Type 8 pole - 10.4m

Polefab Part PF08C712B-2.0-35A-GA

Item Number:	C52387	Cust. Notation or Prt. Description	Specified Mat.:	Quantity:
Parts List				
Place Tolerancing Information and other global drawing data here.	List Update Authorization here.		POLEFAB INC.	
	Approved By:	DD/MM/YY		
	Drawn:	JB 8/17/15	35' SPAN TRAFFIC ARM & POLE BASE MOUNT, WITH FIXT MT & TENON	
	Checked:			
Stock or Material Type	Revision 1		Sheet Size	292
Finish Material of Method	Revision 2:		Rev. Num.	
Avoid Scaling CAD data without consulting supervisor	Revision 3:		Scale: XX : XX	CAD File: C52387-15
		Sheet [X] of [X]		

Item Number	C52387	Cust. Notation or Prt. Description		Specified Mat.:	Quantity:
Parts List					
Place Tolerancing Information and other global drawing data here.	List Update Authorization here.		POLEFAB INC.		
	Approved By:	DD/MM/YY	35' SPAN TRAFFIC ARM & POLE BASE MOUNT, WITH FIXT MT & TENON		
	Drawn:	JB 8/17/15			
	Checked:				
Stock or Material Type	Revision 1				
Finish Material of Method	Revision 2:				
Void Scaling CAD data without consulting supervisor	Revision 3:		Sheet Size	292	Rev. Num.
			Scale: XX : XX	CAD File: C52387-15	Sheet [X] of [X]



COATINGS REQUIRED  
-2 COATS JB ACRYLIC  
FULL LENGTH

2 5/8" x 8" RECESSED ZINC  
H.H. BOX & COVERPLATE  
C/W GROUNDWIRE &  
ROBERTSON SCREWS

NAMEPLATE

3/4" x 27"  
ANCHOR BOLTS  
BY OTHERS

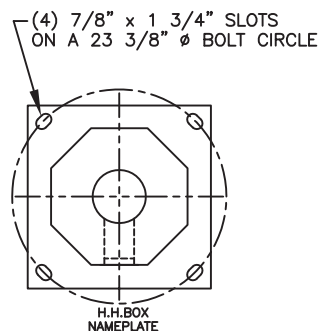
REV.	ALTERATION	DATE	BY
A	FIXTURE WAS K56-C-K24-BAAR-III-75(SSL)-5000-120-PR	03/19/13	A.A.

### ① LUMINAIRE SPECIFICATIONS

CATALOGUE NO.: K56-C-T-FAFL-II-60(SSL)  
-5000-120-PBC  
QUANTITY:  
LANTERN TYPE: CLEVELAND  
POLE ADAPTOR: 3 1/2" O.D. SLIPFITTER  
OPTICAL SYSTEM: FLAT ARRAY FLAT LENS  
IES LTG. CLASS.: TYPE II  
INPUT WATTS: 60W  
SOLID STATE LIGHTING  
SERIES: 5000  
CCT: 4500K  
LINE VOLTAGE: 120V  
PAINT: TEXTURED BLACK  
OPTIONS: PHOTO BUTTON CELL

### ② POLE SPECIFICATIONS

CATALOGUE NO.: KBC13-G-S11-FBP  
C/W 140-35/35  
QUANTITY:  
TYPE: BELMONT COACHMAN  
SECTION: OCTAGONAL  
COLOUR: ECLIPSE  
FINISH: POLISHED  
POLE TOP: 5 1/2" FL/FL  
POLE BUTT: 17" FL/FL  
POLE LENGTH: 13' 0"  
APPROX WEIGHT: 945 lbs.  
MIN. RACEWAY: 1 1/8" Ø



TOP VIEW

### BASEPLATE DETAIL

MAT'L: 3/4" x 20" x 20" GALV. STL  
DWG# 503D0007 TEMPLATE #7B

CUSTOMER APPROVAL & DATE: \_\_\_\_\_



King Luminaire • Stresscrete • Est. 1953

STRESSCRETE  
GROUP

### Manufacturing Locations:

Burlington, Ontario 1-800-268-7809  
Northport, Alabama 1-800-435-6563  
Atchison, Kansas 1-800-837-1024  
Jefferson, Ohio 1-800-268-7809

CUSTOMER ORDER No:	-
STRESSCRETE ORDER No:	-
KING CANADA ORDER No:	-
KING U.S. ORDER No:	-

PROJECT/CUSTOMER:

REGION OF NIAGARA

DRAWN BY:  
TASHI B.

AT:  
SC1

CHECKED BY:

DATE:

04/12/11

REVISION:

A

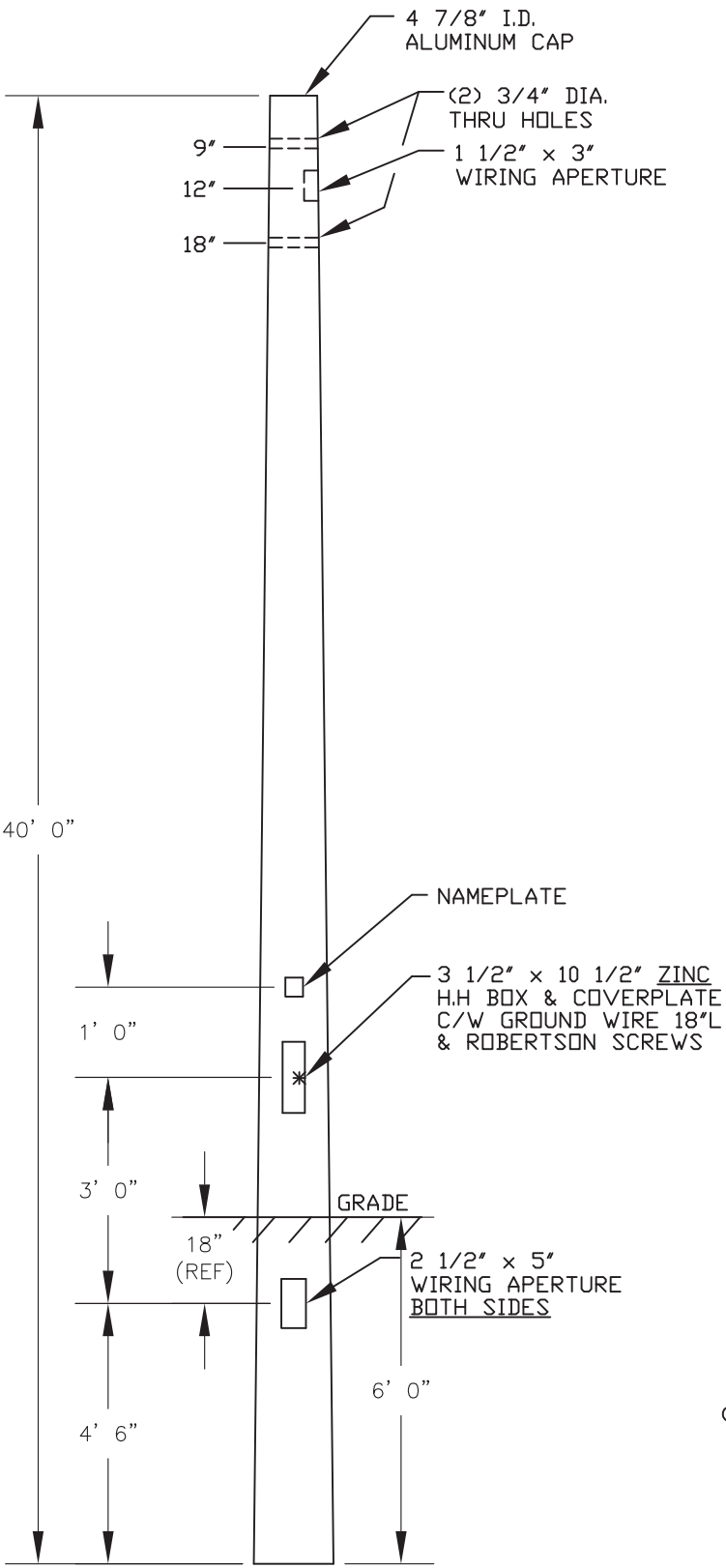
DRAWING TYPE:

CONCEPT DWG.

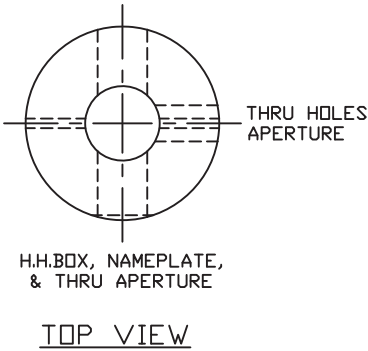
DRAWING NUMBER:

206A6336-4

REV.	ALTERATION	DATE	BY





POLE SPECIFICATIONS  
 CATALOGUE NO.: E400-BPR-G-M00  
 S/F 120  
 SECTION: ROUND  
 FINISH: MOULD FINISH  
 POLE TOP: 4 3/4" DIA.  
 POLE BUTT: 12" DIA.  
 POLE LENGTH: 40' 0"  
 APPROX. WGT.: 2,110 LBS  
 QUANTITY:  
 MIN. RACEWAY: 1 1/8" ø



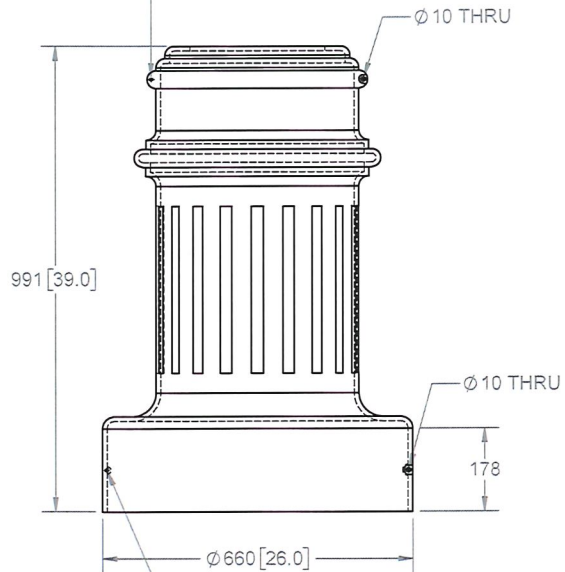
CUSTOMER APPROVAL & DATE: \_\_\_\_\_

Notes:  
 StressCrete makes no claims that the reference embedment depth shown is suitable for supporting this structure. It is recommended that a competent professional evaluate the soils present on site, confirming required embedment depth, hole diameter and backfill material to be used.

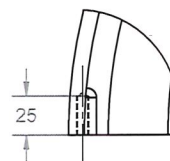
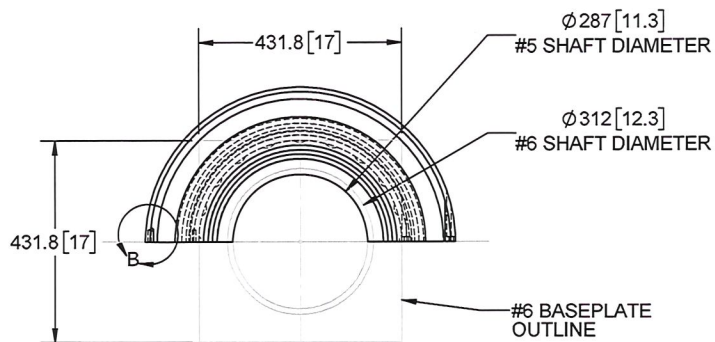
CUSTOMER ORDER No:	-
STRESSCRETE ORDER No:	-

 		<u>Manufacturing Locations:</u> Burlington, Ontario 1-800-268-7809 Northport, Alabama 1-800-435-6563 Atchison, Kansas 1-800-837-1024 Jefferson, Ohio 1-800-268-7809	
King Luminaire • StressCrete • Est. 1953 <b>STRESSCRETE GROUP</b>		PROJECT/CUSTOMER: NIAGARA REGION	
DRAWN BY:	AT:	CHECKED BY:	DATE:
G.R.	SC1		02/05/16
DRAWING TYPE:		DRAWING NUMBER:	
SPEC/MFG DWG.		SPEC\NIAGARA REGION\ NR-40BPR	

Ø 6.528  $\nabla$  25  
5/16-18 UNC - 2B  $\nabla$  25

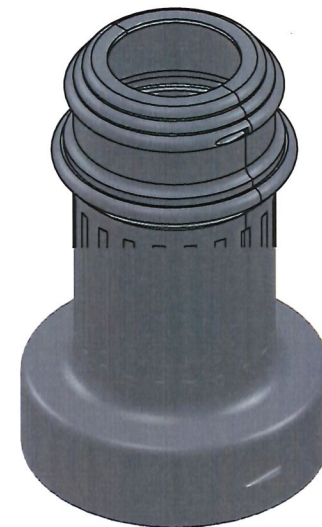
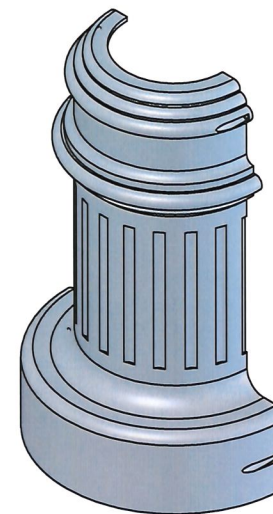


Ø 6.528  $\nabla$  25  
5/16-18 UNC - 2B  $\nabla$  40



**DETAIL B**  
SCALE: 1 : 3

REV	DESCRIPTION	DATE	APPROVED
0	-	dd/mm/yyyy	-



**PROPERTIES:**  
**CAST ALUMINUM 356 COMMERCIAL**

Mass properties of F055159


Mass = 52.9 pounds per half  
Volume = 540.7 cubic inches  
Surface area = 2831.4 square inches

Center of mass: ( inches )

X = 0.0

Y = 19.2

Z = 6.2

 <p><small>PROPRIETARY AND CONFIDENTIAL THE INFORMATION CONTAINED HEREIN IS UNCLASSIFIED DATE 05-10-61 BY 60357 JH/STP ANY REPRODUCTION IN ANY FORM OR BY ANY MEANS WITHOUT THE WRITTEN PERMISSION OF POLEFAB INC. IS PROHIBITED.</small></p> <p><small>POLEFAB INC. 21 SALES DRIVE WEST, UNIT 6 SHAWINIGAN, ONTARIO, CANADA, L9G 1V9 TEL: 1-866-215-7414 FAX: 1-905-835-0812 WWW.POLEFAB.COM</small></p>	DRAFTED BY: JB	05/02/19	POLEFAB JOB #:	-
	CHECKED BY: -	-	CONTRACTOR:	-
	DIMENSION UNITS: MM	-	CONTRACT #:	-
	MATERIAL: -Aluminum	-	PROJECT: CAST ALUMINUM BASE COVER	-
	WEIGHT: 52.8	-	Permanent Mold cast (SS)	TITLE:
SCALE: 1:10	COATING: -	-	Niagara Region Cast Alum base cover	
TBD:	SCALE: 1:10	-	SIZE: DRAWING #: B	F055159
TBD:	TBD:	-	REV: 0	SHEET: 1 OF 1



Polefab Inc.  
155 Pony Drive  
Newmarket ON L3Y 7B5  
CANADA

Telephone: 905.836.2222  
Fax: 905.836.5612

ADDED TO STOCK  
18 JAN 2016

# INVOICE

Date: 11/11/2015

Invoice #: 522

Bill To:  
Regional Mun. of Niagara  
P.O. Box 1042  
Thorold ON L2V 4T7  
CANADA

Ship To:  
Regional Mun. of Niagara  
3547 Thorold Townline Road  
Thorold, ON L2V 4T7  
[REDACTED]

Contact: Accts. Payable

Customer PO #		Invoice Due Date	Customer Code	Salesperson	Terms	
B01166		11/12/2015	C10106		Net 30	
#	Item #	Description	Past #	Quantity	Unit Price	Line Total
1	BNA25-BL	Round Tapered Banner Arm 25" Fibreglass w/ black casting		48.000		

NEW # 575126  
[REDACTED]

Subtotal

Total Sales Tax

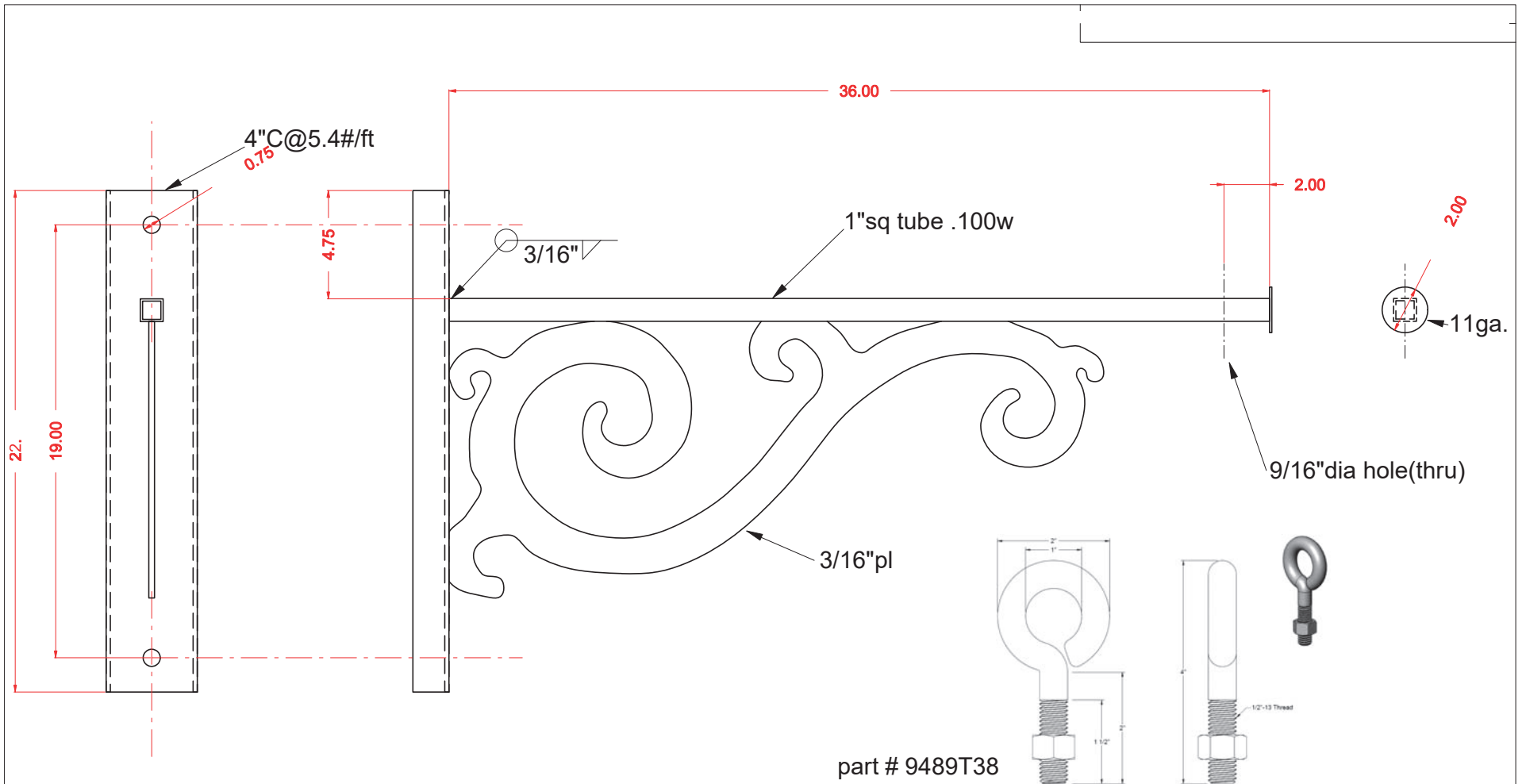
Amount Due

[REDACTED]
[REDACTED]
[REDACTED]

Vendor [REDACTED]	[REDACTED]
Checked	[REDACTED]
Approved	[Signature]

0001-0254

THANK YOU FOR YOUR BUSINESS!



coat black

Item Number	Part Number	Cust. Notation or Prt. Description	Specified Mat.:	Quantity:
Parts List				
Place Tolerancing Information and other global drawing data here.	List Update Authorization here.		POLEFAB INC.	
	Approved By:	DD/MM/YY	FLOWER POT SUPPORT NIAGARA REGION	
	Drawn:			
	Checked:			
Stock or Material Type	Revision 1		Job Number	
Finish Material of Method	Revision 2:			
Avoid Scaling CAD data without consulting supervisor	Revision 3:			
Sheet Size		Scale: XX : XX	CAD File: XXXX.XXX	Rev. Num.
		Sheet [X] of [X]		





## Procedure to Prepare and Coat Galvanized Products with Polecoat

- It is understood that the galvanized products have been Quality checked to meet the required standards for the end use of the product as required by the customer
- All parts are to be prepared to SSPC-SP7 Brush Blast. Care is taken to ensure the product is not over blasted or excessively coarse. Any areas not requiring coating will be masked off.
- Rough Galvanizing shall be sanded.
- All surfaces are then blown with clean, dry air to remove any residual dust.
- A dry film measurement of the galvanizing is taken via a Type 2 constant probe magnetic gauge according to SSPC-PA 2 with the exception that 3 spots are measured at three separate locations.
- Damage to galvanizing shall be touched up with a zinc rich product as approved by the specification governing the end use.
- Poles are then processed for coating in a manner that ensures minimal touch-ups if required.
- Poles are then prime coated and allowed to dry as per the primer guidelines.
- Following the required drying time, the poles are then coated with a two component polyurea\polyurethane product.
- Following the two component drying time, the UV Top coat is applied and allowed to dry
- Final Inspection of the product is then carried out and all necessary components required are installed.